



Luscombe Maye
Since 1873

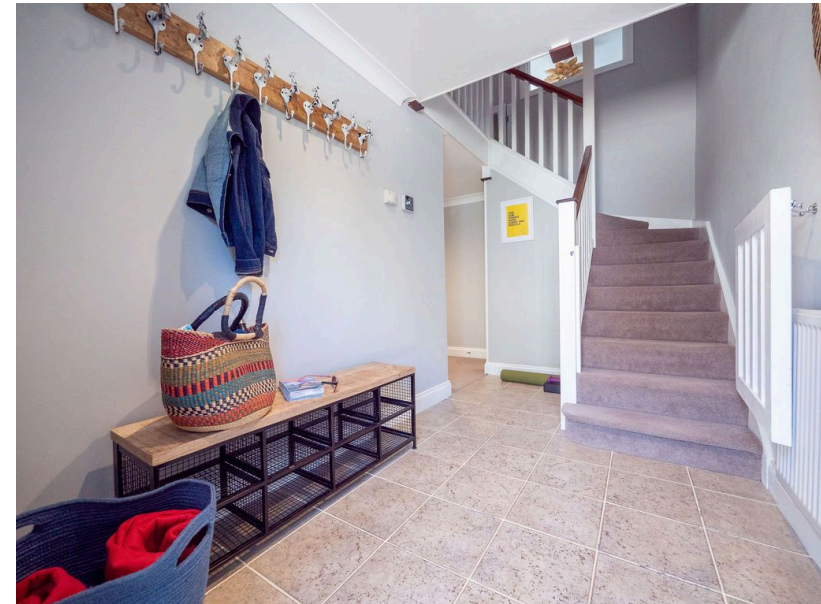
7 Coleridge Barns, Chillington

£525,000

🛏 5 🚿 2 🚗 0



- Five Bedroom
- Single Garage
- Principal Bedroom with En-Suite
- Immaculate Condition
- Two Acres of Beautiful Communal Gardens
- Barn Conversion
- Character Features Including Exposed Beams
- Successful Airbnb History
- Allocated Parking





A well-presented five bedroom barn conversion offering spacious open-plan living, character features throughout, garage and parking, all set in a peaceful yet well-connected location close to Kingsbridge.

