



Hallam Mews, W1W
£3,250,000

Dexters



Hallam Mews, W1W

A four bedroom mews house with private outdoor space and parking situated in a pretty cobbled mews between Marylebone High Street and Fitzrovia.

The property has been exquisitely refurbished throughout and has a decked terrace spanning the width of the building. There is a garage available on a separate lease from the Howard De Walden Estate.

The kitchen/dining room has high quality wood flooring, integrated Miele appliances and blue slatted window shutters which are in keeping with the stylish décor. It also features a beautifully spacious Smallbone-designed Shaker-style kitchen. The spacious reception is on the same floor and has a feature fireplace and built-in shelving.

The master bedroom has built-in wardrobes, en suite bathroom and sliding glass doors leading onto a private terrace which can also be accessed off the hallway. There are two further en suite bedrooms and a fourth bedroom and bathroom on the first floor.

Nestled between Hallam Street and Weymouth Street moments from the independent restaurants, cafes and bars of Marylebone and Fitzrovia.

Features

- Mews House
- Parking
- Beautifully Refurbished
- Private Decked Terrace
- Four Double Bedrooms
- Four Bathrooms



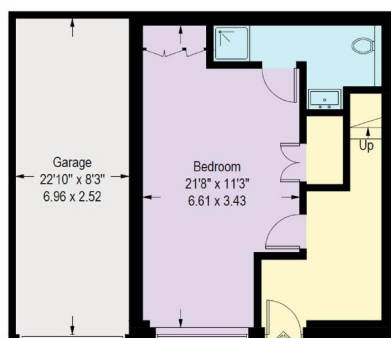




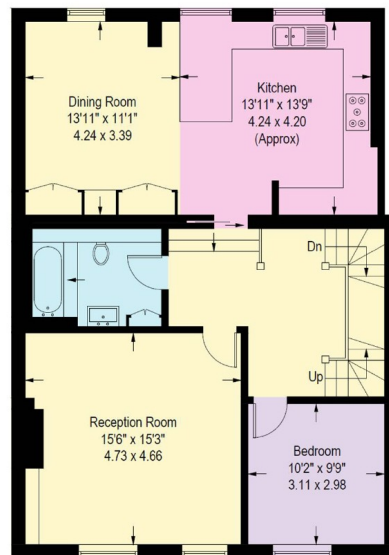
Hallam Mews, London, W1W

Hallam Mews, W1W

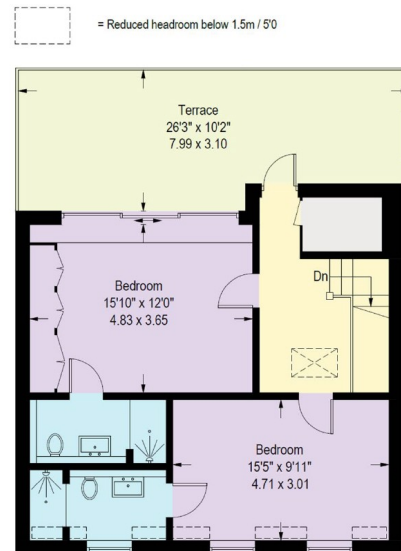
Approximate Gross Internal Area = 1948 sq ft / 181.0 sq m
(Excluding Reduced Headroom)
Reduced Headroom = 16 sq ft / 1.5 sq m
Garage = 187 sq ft / 17.4 sq m
Total = 2151 sq ft / 199.9 sq m



Ground Floor



First Floor



Second Floor

Illustration for identification purposes only,
measurements are approximate, not to scale. (ID594389)

Dexters

Marylebone
53-55 Weymouth Street
London
W1G 8NJ
Sales
020 7224 5544

Energy Rating: C. We aim to make our particulars both accurate and reliable. However they are not guaranteed; nor do they form part of an offer or contract. If you require clarification on any points then please contact us, especially if you're traveling some distance to view. Please note that appliances and heating systems have not been tested and therefore no warranties can be given as to their good working order.

 **RICS** | Regulated
Estate Agent
and Letting Agent

dexters.co.uk