



Avondale House
Mortlake High Street, SW14

CHESTERTONS





Situated on the top two floors of a small, purpose-built development, this spacious split-level maisonette offers three well-proportioned bedrooms and is being sold with the benefit of an extended lease.

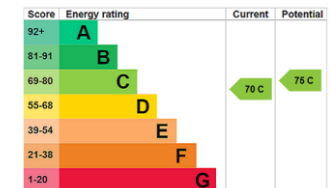
Enjoying partial views of the River Thames, the property is superbly located within half a mile of both Barnes Village and East Sheen town centre. Mortlake High Street and White Hart Lane are even closer, offering an excellent selection of popular independent restaurants, cafés, wine bars and traditional pubs.

The area is well served by highly regarded schools, including St Mary Magdalen's and Thomson House, while a variety of nearby parks and picturesque riverside walks along the Thames provide excellent opportunities for outdoor recreation.

Offered to the market chain free, this generously sized home combines an enviable location with practical benefits, including an already extended lease, making it an excellent choice for families, professionals and investors alike.

- Extended Lease
- Three Bedrooms
- Split Level
- Large Separate Kitchen
- Partial River Views
- Double Glazed Windows

Asking Price £565,000



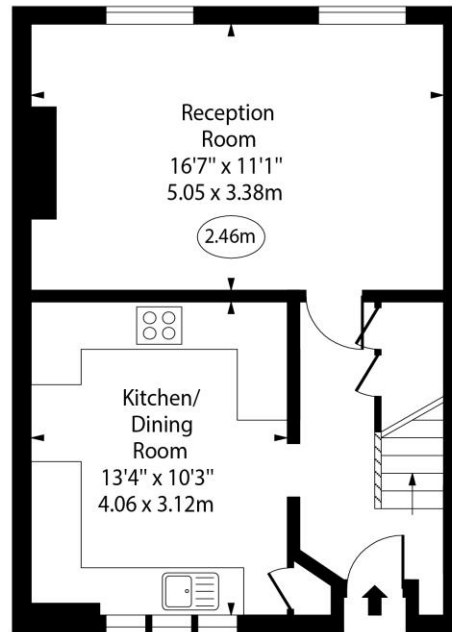
Tenure: Leasehold
Service Charge: £2800
Ground Rent: £10
Local Authority: London Borough of Richmond upon Thames
Council Tax Band: D

Chestertons East Sheen Sales
 254A Upper Richmond Road West
 East Sheen
 London
 SW14 8AG
 sheen@chestertons.co.uk
 020 8104 0580

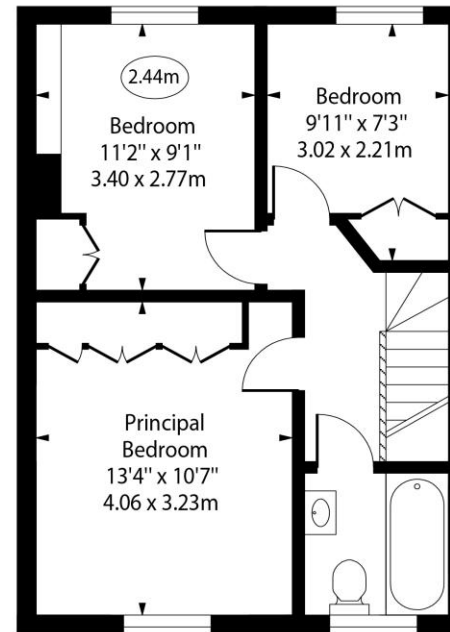
Avondale House,
Mortlake High Street, SW14



○ - Ceiling Height



Second Floor



Third Floor

Approx Gross Internal Area 820 Sq Ft - 76.18 Sq M

Every attempt has been made to ensure the accuracy of the floor plan shown. However, all measurements, fixtures, fittings, and data shown are approximate interpretations and for illustrative purposes only. Measured according to the RICS. Not To Scale.

www.goldlens.co.uk
Ref. No. 032186E

Chesterton UK Services Limited trading as Chestertons for themselves and for the vendor of this property whose agents they are, give notice that (i) these particulars do not constitute any part of an offer or contract, (ii) all statements contained within these particulars are made without responsibility on the part of Chestertons or the vendor, (iii) whilst made in good faith, none of the statements contained within these particulars are to be relied upon as a statement or representation of fact, (iv) any intending purchasers must satisfy themselves by inspection or otherwise as to the correctness of each of the statements contained within these particulars, (v) the vendor does not make or give either Chestertons or any person in their employment any authority to make or give representation or warranty whatsoever in relation to this property. Wide angle lenses may be used. ©Copyright Chestertons | Chesterton UK Services Limited | Registered Office 5th Floor, The Lantern, 75 Hampstead Road, London, NW1 2PL Registered Company Number 05334580.



This paper is
100% recyclable