



BONCHURCH ROAD, W10

£1,925,000

Three Double Bedrooms
Two Bathrooms + Guest WC
Large Open Plan Living Space
Chain Free
CGI Staged
High Specification

@marshandparsons
marshandparsons.co.uk

MARSH &
PARSONS

ABOUT THE PROPERTY

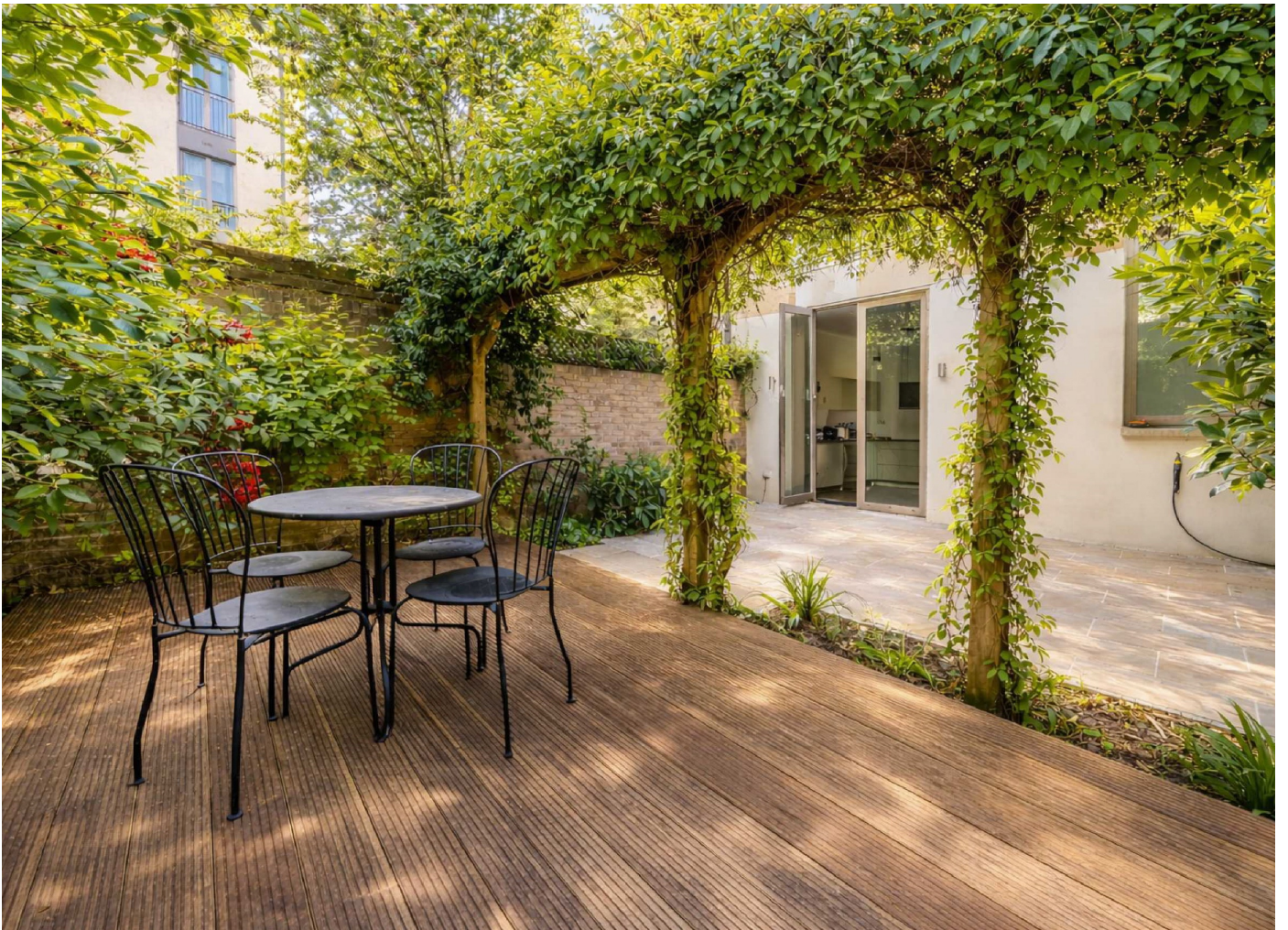
A beautifully designed three bedroom house set within a secure gated development on Bonchurch Road, offering exceptional open plan living, multiple outdoor spaces and a high level of privacy.

Bonchurch Road is a quiet, well-regarded address in North Kensington, ideally positioned moments from Golborne Road and Portobello Road. The area offers a vibrant mix of independent cafés, restaurants and shops, with excellent transport links via Ladbroke Grove and Westbourne Park underground stations.

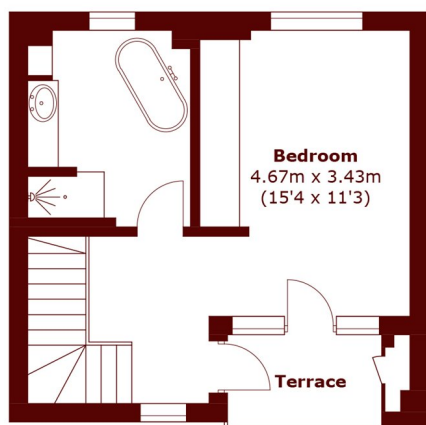




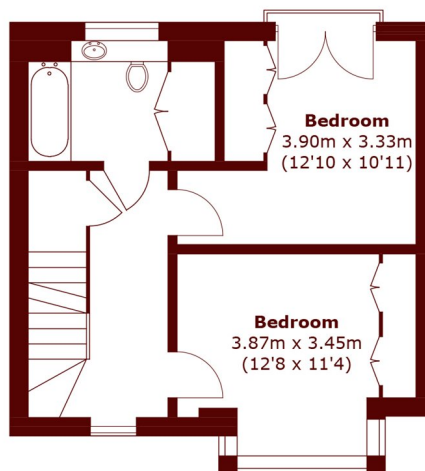




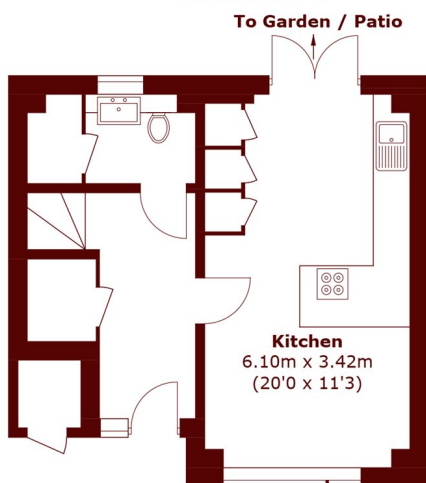
STEP INSIDE BONCHURCH ROAD



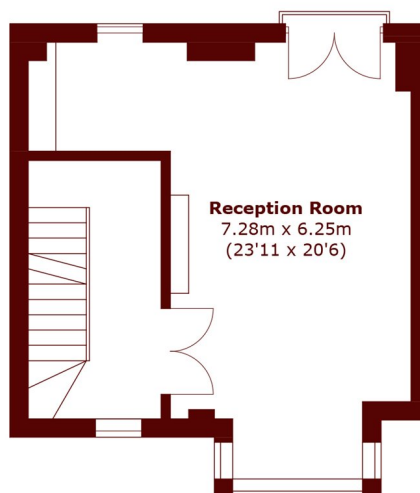
Third Floor



Second Floor



Ground Floor



First Floor

Approx Internal Area: 149.3 sq. m (1,607.1 sq. ft)
External Store (approx.): 1.6 sq. m (17.2 sq. ft)
Terrace area (approx.): 3.8 sq. m (40.9 sq. ft)

North Kensington
020 7313 8350

Energy Rating: B We aim to make our particulars both accurate and reliable. However, they are not guaranteed; nor do they form part of an offer or contract. If you require clarification on any points then please contact us, especially if you're traveling some distance to view. Please note that appliances and heating systems have not been tested and therefore no warranties can be given as to their good working order

MARSH &
PARSONS