



3 Maple Court Blenheim Road

London, SE20 8HN

Asking Price £200,000

Nestled on the charming Blenheim Road in London, this delightful studio flat offers a perfect blend of comfort and convenience. Spanning an area of 334 square feet, this first-floor residence has been thoughtfully refurbished, featuring a recently updated kitchen that is both stylish and functional.

The studio flat is situated in a well-maintained block, providing a peaceful retreat while still being close to the vibrant Penge High Street. Residents will appreciate the easy access to a variety of local shops, cafes, and amenities, making daily life both enjoyable and convenient.

For those who commute, the property is ideally located within walking distance of both Penge East and Penge West train stations, ensuring swift connections to central London and beyond. This makes it an excellent choice for professionals or anyone seeking a lively urban lifestyle.

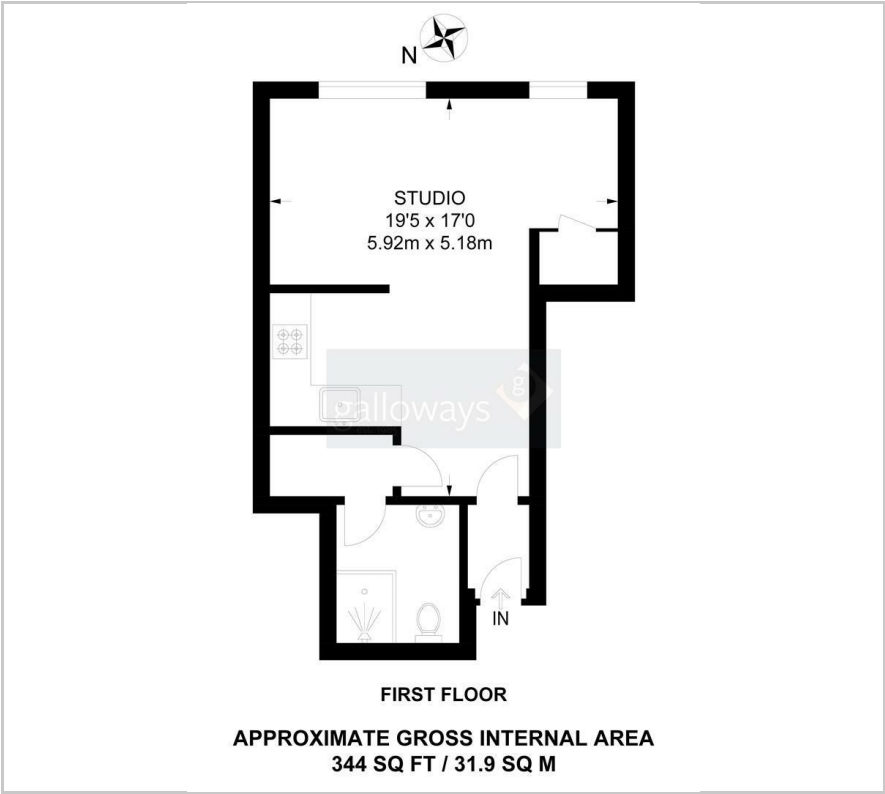
With one reception room and a well-appointed bathroom, this studio flat is perfect for individuals or couples looking for a cosy yet modern living space. Whether you are a first-time buyer or an astute investor, this property presents a wonderful opportunity to own a piece of London living in a sought-after area. Don't miss the chance to make this charming studio your new home.

Viewing

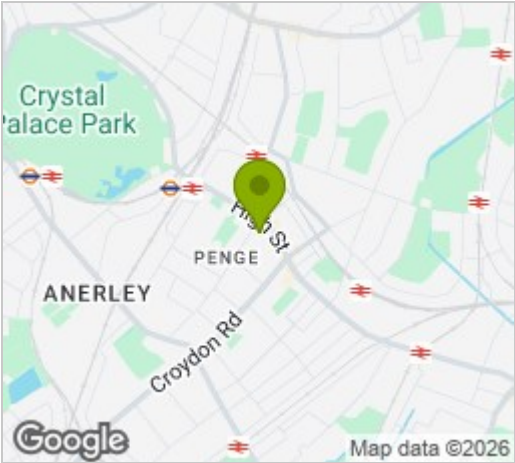
Please contact our Galloways Penge Office on 020 8778 1120 if you wish to arrange a viewing appointment for this property or require further information.

- STUDIO FLAT
- FIRST FLOOR
- NO ONGOING CHAIN
- RECENTLY REFURBISHED KITCHEN
- FITTED SHOWER SUITE
- GAS CENTRAL HEATING
- DOUBLE GLAZED WINDOWS
- 7 MINUTE WALK TO PENGE EAST STATION
- 9 MINUTE WALK TO PENGE WEST STATION
- (ALL WALKING TIMES ARE ESTIMATED VIA GOOGLE MAPS)

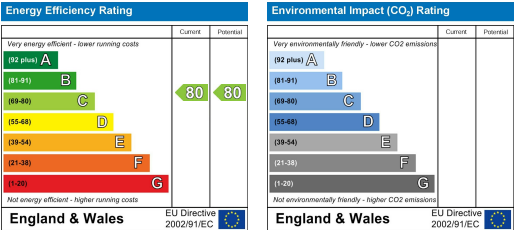
Floor Plan



Area Map



Energy Efficiency Graph



These particulars, whilst believed to be accurate are set out as a general outline only for guidance and do not constitute any part of an offer or contract. Intending purchasers should not rely on them as statements of representation of fact, but must satisfy themselves by inspection or otherwise as to their accuracy. No person in this firm's employment has the authority to make or give any representation or warranty in respect of the property.