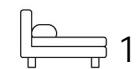




Living  
made  
better

Grosvenor Court  
Catford, SE6 4FD



Asking Price £295,000

# Grosvenor Court, Catford, SE6 4FD

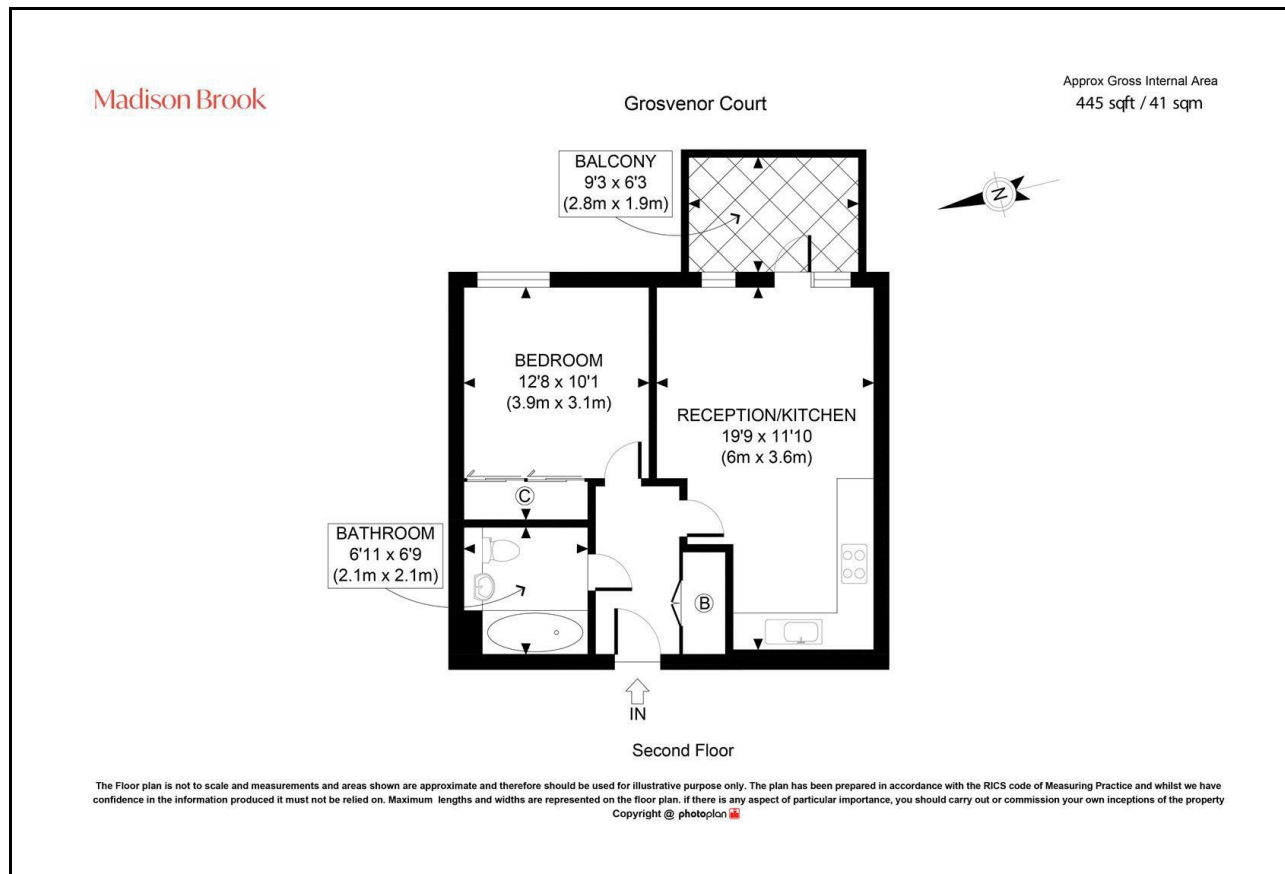
Madison Brook

## Property Summary

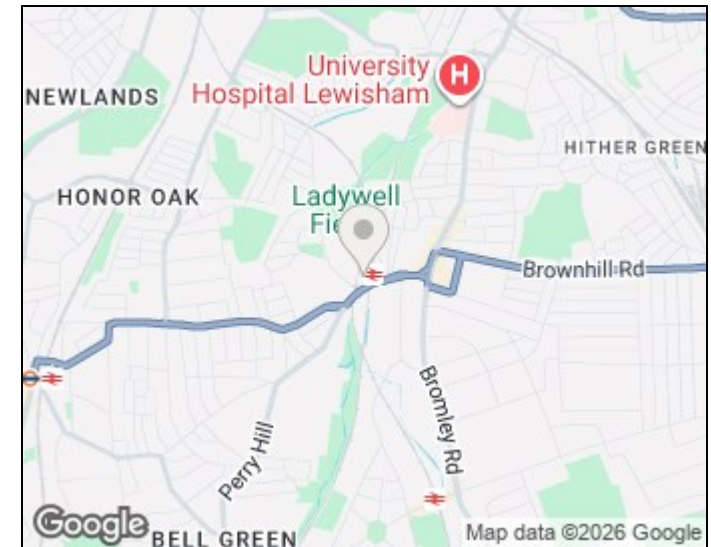
This apartment is located on the second floor of Grosvenor Court, part of the sought-after Catford Green Development. Offering 445 sq. ft. of living space, the property features an open-plan living area and kitchen with integrated appliances leading onto a private balcony, a double bedroom with a built-in wardrobe, and a contemporary three-piece bathroom. Perfectly located moments from both Catford and Catford Bridge stations. It is also just a short walk from Ladywell Fields, offering a range of local shops, cafés, and amenities nearby.

Service Charge: £2,015 pa | Ground Rent: £300 pa | Lease Remaining: 146 years

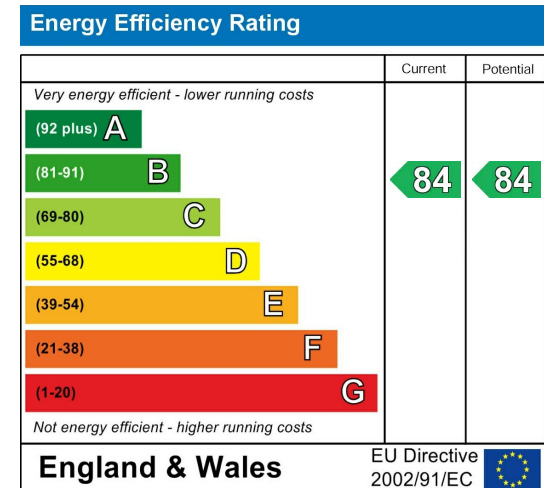
## Floorplan



## Area Map



## Energy Efficiency Graph



43 Loampit Vale, Lewisham, London, SE13 7FT

Tel: 020 3946 6200 Email:  
lewisham@madisonbrook.com  
<https://madisonbrook.com/>

These particulars, whilst believed to be accurate are set out as a general outline only for guidance and do not constitute any part of an offer or contract. Intending purchasers should not rely on them as statements of representation of fact, but must satisfy themselves by inspection or otherwise as to their accuracy. No person in this firm's employment has the authority to make or give any representation or warranty in respect of the property.