



TREE TOPS

Spurstow



TREE TOPS, SPURSTOW

Set amidst a patchwork of fields knitted together by hedgerows on one of Cheshire's most leafy rural lanes, Tree Tops is a home that knows exactly how to entertain. Tucked back off Peckforton Hall Lane, Spurstow sits comfortably between the vibrant village life of Bunbury and Tarporley and the walking country of Beeston and Peckforton. Beyond neat cobble setts, pull onto the recently relaid gravel driveway, offering plenty of parking for five cars alongside a garage and electric vehicle charging point.

WELCOME HOME

Stained glass casts a colourful reflection on the walls of the porch, laid underfoot in monochrome patterned tiling. Beyond, in the warmth and welcome of the entrance hall, herringbone flooring lends a touch of French country house character underfoot while dramatic botanical wallpaper adds a flourish of boutique-hotel glamour. Flair continues in the cloakroom, with downstairs WC and wash basin, while storage is available under the stairs.

Formerly an office, a quiet reading room lies to the left, light-filled and versatile. With space for a single bed and the convenience of the cloakroom next door, it could readily serve as a ground-floor bedroom for an overnight guest or dependent relative, should needs evolve.





Recharge and relax in the garden room next door, a peaceful retreat, cleverly reconfigured from the home's original kitchen layout, where bespoke glazed pocket doors slide back to reveal display shelving. Light drifts in through a large window providing leafy garden views, ensuring this room is the perfect spot for a peaceful moment, a morning coffee or an evening gin and tonic with a friend.

Leave the doors open to create an easy flow through into the lounge when entertaining. Bright and spacious, with French doors opening onto the rear patio and open countryside drawing the eye beyond, this is another room that has moved with family life, evolving from a teenage hangout and movie room to a peaceful garden-facing retreat. Practical places feature too, with a light utility room offering plumbing for a washing machine and dryer, and access through into the garage.

In delicious contrast to the lighter living spaces, the whisky lounge introduces a more theatrical mood. Inspired by the intimacy of a speakeasy, bespoke illuminated cabinetry with 56 alcoves creates a striking display for whisky, wine or collected curiosities, while black and copper ceiling detailing and French château-inspired styling enhances the mood. Used by the current owners as both a home office, conversation piece and entertaining space, it is a room with unmistakable personality.





Throughout Tree Tops, there is a built-to last feel, reflected in the quality of finishes throughout, and nowhere is this felt more so than in the bespoke handmade Cheshire Kitchens kitchen, the sociable heart of the home. Stretching across the rear of the house, this expansive open-plan space has been designed for family life at its fullest, with space for cooking, dining, celebrating, relaxing and unwinding indoors and out, with French doors opening to the pergola covered patio and bifolding doors opening to the decking area.

"This is where we spend the bulk of our time. Having the bifolding doors at the end of the kitchen open is the essence of summer living."

FEAST YOUR EYES





Gather at the large and sociable central island which naturally draws people in, while the dining area, warmed by a log burner, reflects the owners' fondness for French-inspired interiors. Appliances include a double fridge freezer and electric Aga, with storage plentifully available.

A true party house, the kitchen is the source of New Year gatherings, games evenings and conversation with the fire flickering in the background as guests drift between kitchen, patio and garden, drink in hand. Moments of stillness and contemplation can still be found in quiet morning coffee at the island, family suppers, or simply watching the ponies in the neighbouring field wander over hopefully in search of an apple from the garden.



BEDTIME BLISS

From the entrance hall, ascend the stairs where five characterful bedrooms await. Off the landing to the left, a single bedroom currently serves for visiting children and grandchildren when not in use as a crafting room.

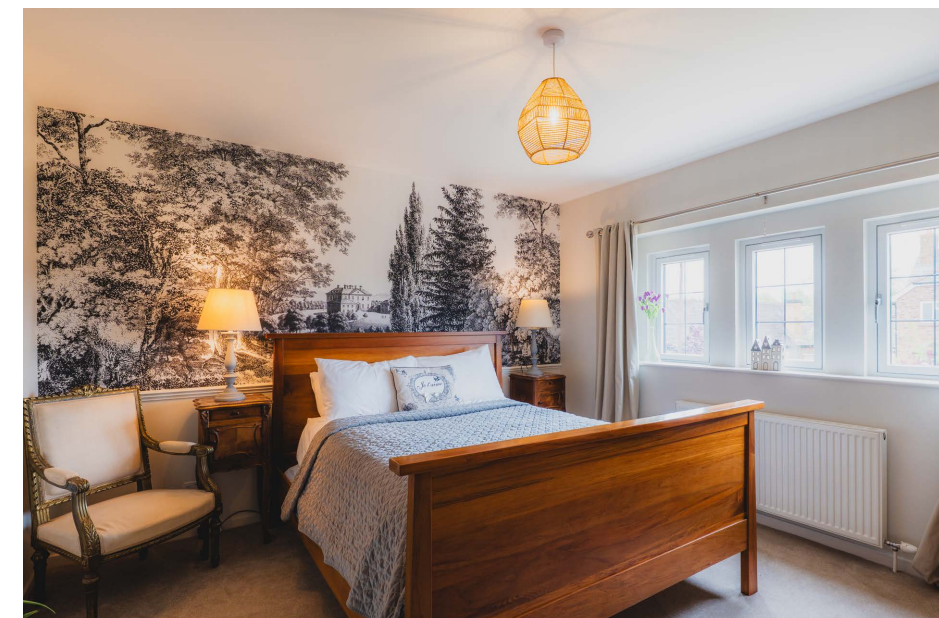
Peace and calm await in the master bedroom, a room where spaciousness and cosy comfort coexist in harmony. Cushioned windows to both the front and rear draw in natural light while offering far-reaching views over the garden, neighbouring fields and, occasionally, the resident ponies. Private and peaceful, warm-toned wooden flooring and floral decor soften the sense of scale, creating a restful boudoir feel. A walk-in wardrobe and en suite shower room complete the sense of self-contained privacy and luxury.



Returning along the landing, to the left, forest and fern greens meet in the guest bedroom, with built in storage and a grey metro-tiled shower room en suite, ideal for teenagers or guests who want a bit of privacy, replete with glorious garden views.

Refreshment awaits in the nearby bathroom, spacious and bright containing a bath with shower overhead alongside wash basin, WC and heated towel radiator.

The fourth of the bedrooms is showered with light from a wide window overlooking the garden and is again furnished with built-in wardrobe storage. Meanwhile, to the front, a further double bedroom is light and bright, with plenty of room for freestanding wardrobes, ideal for family or guests.





Step outside and onto the broad stone terrace where the covered pergola offers shelter and shade enabling al fresco suppers and barbecues that needn't be dictated by the British weather.

“The introduction of the canopy changed our way of living – we can leave the doors open without worrying about the rain coming in – have BBQs without needing to cancel – it’s been a game changer.”



FAMILY TIME OUTDOORS





Beyond, lush green lawn unfurls, separated by raised beds to form an upper and lower lawn, adding character whilst providing ample space for children's garden games. Mature trees provide shelter for birds, whose song adds to the garden's relaxed ambience. At the back of the garden, the summer house adds another layer of luxury to the outdoor space, with provision for the addition of a hot tub to the rear.



OUT & ABOUT

Step out of the door and straight into some of Cheshire's finest walks and rambles with the renowned Sandstone Trail within easy reach for daily dog walks and spectacular views taking in both Peckforton Castle and Beeston Castle. Take a scenic stroll through the fields to The Pheasant Inn, the perfect stop off point for lunch or a thirst quencher, while closer to home, Panama Hattie's sits just moments away for cocktails and relaxed dining. The Yew Tree Inn in Bunbury and The Dysart Arms are both popular local favourites for sunny afternoons in the beer garden.

For day-to-day essentials, nearby Bunbury is brimming with the essentials, including a Co-op, Post Office, cafés including award-winning Tilly's and The Sheds, alongside a fish and chip shop, while Tarporley provides a wider choice of independent shops, eateries and everyday conveniences.

Families are well served, with Partou Brambley Hedge Day Nursery and Pre School nearby, highly regarded schooling in Bunbury and a bus service to Tarporley High School stopping close to the house. Enjoy weekends spent in the tree tops or splashing about with both BeWILDerwood Cheshire, Manley Mere and Wild Shore Delamere within easy reach for den building, zip-lining, paddleboarding, sailing, wakeboarding and wild swimming.

Despite the rural setting, connectivity remains refreshingly easy, with Chester, Nantwich and Whitchurch all easily accessible for shopping, commuting and wider amenities. A home full of life, built for fun, enjoyment and entertainment, Tree Tops is a home as dynamic as its name suggests. Surrounded by splendid countryside views and a beautiful setting, Tree Tops offers an exceptional environment for family life

ASK THE OWNERS

Where do you go when you need...



GROCERIES?

For everyday essentials, the Co-op Food in Bunbury village is ideal for daily shopping needs. For larger supermarkets and a wider range of amenities, both Whitchurch and Nantwich are within easy reach.



A WALK?

You are surrounded by beautiful Cheshire countryside, with numerous walking routes directly accessible from the doorstep. There is easy access to the Sandstone Trail, along with plenty of open countryside ideal for dog walking and off-lead routes. Scenic walks also lead to nearby pubs and landmarks including The Pheasant Inn and Peckforton Castle.



A BITE TO EAT?

There are some excellent places to eat nearby, including The Yew Tree, Panama Hatty's, The Dysart Arms and Tilly's Café, all within easy reach. Further afield, Tarporley offers a fantastic selection of cafés and restaurants including Ginger and Pickles and Terrarium by Little Tap.



YOUR LOCAL PUB?

The local pub is The Yew Tree, a traditional village pub known for its welcoming atmosphere. The surrounding villages also offer a fantastic selection of country pubs within walking distance or a short drive away.



A DAY OUT WITH THE FAMILY?

Nearby attractions include Chester Zoo, Cheshire Oaks Designer Outlet, Delamere Forest and Beeston Castle. Other popular destinations include BeWILDerwood Cheshire, Cheshire Ice Cream Farm, Blakemere Village, The Crocky Trail, Manley Mere and Wild Shore Delamere.

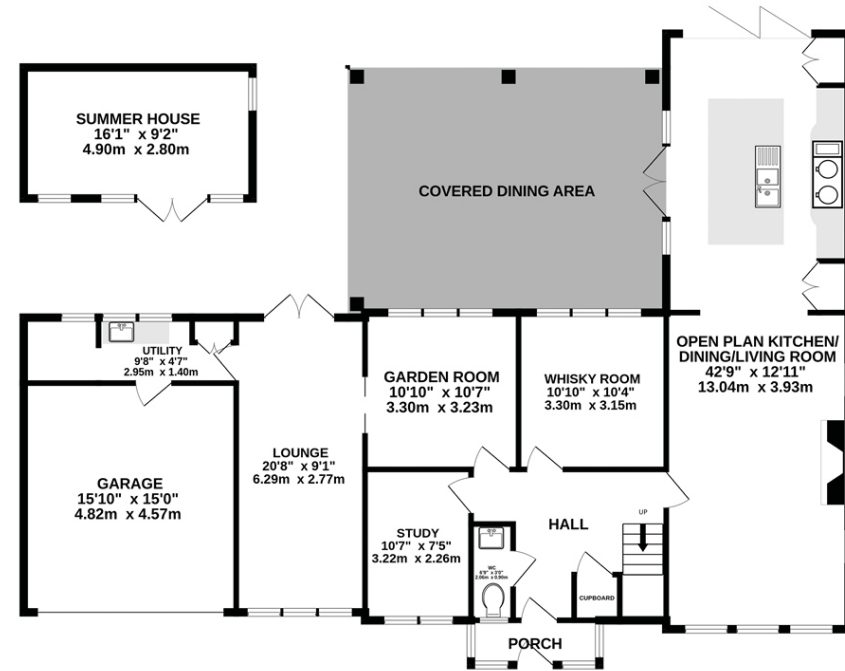


SCHOOLS?

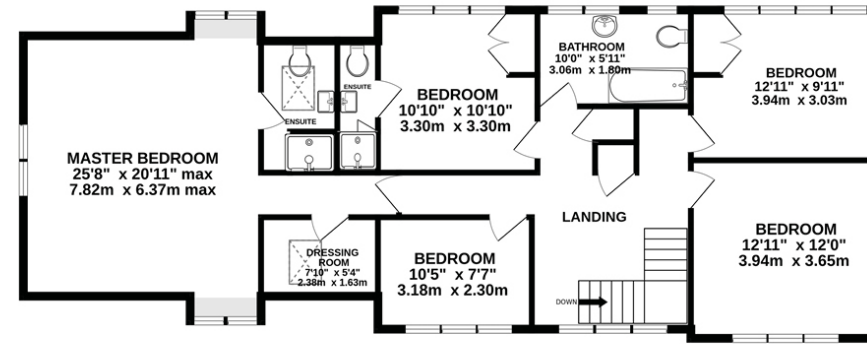
The property is well placed for highly regarded local schools, including Bunbury Aldersey CofE Primary School and Tarporley High School and Sixth Form College. For younger children, Partou Nursery is conveniently located approximately 500 metres from the property.

FLOORPLAN

GROUND FLOOR
1655 sq.ft. (154 sq.m.) approx.



FIRST FLOOR
1176 sq.ft. (109 sq.m.) approx.



TOTAL FLOOR AREA: 2831 sq.ft. (263 sq.m.) approx.

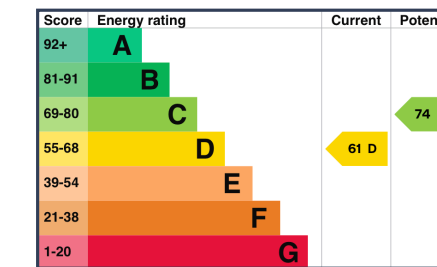
EXCLUDING GARAGE: 2604.5 sq.ft. (241 sq.m.) approx.

Whilst every effort has been taken to ensure the accuracy of this floorplan; the room sizes, placement of doors or windows and any countertops or other items are approximate and therefore we take no responsibility for error or omission. This floorplan is for illustrative purposes and should be used as such for any potential purchaser.

KEY FEATURES

- Beautifully renovated countryside home set along one of Cheshire's most sought-after rural lanes near Bunbury, Tarporley and Peckforton
- Multiple versatile reception rooms including a garden room, reading room and dramatic speakeasy-inspired whisky lounge
- Expansive bespoke Cheshire Kitchens kitchen-dining-living space with bifolding doors, French doors and electric Aga
- Large lounge with French doors opening onto the rear patio and uninterrupted countryside views beyond
- Five characterful bedrooms including a spacious master suite with walk-in wardrobe and en suite shower room
- Covered pergola terrace and landscaped gardens designed for year-round entertaining and indoor-outdoor living
- Summer house with provision for a hot tub plus generous lawned gardens with mature trees and raised beds
- Driveway parking for five vehicles, garage and electric vehicle charging point
- Surrounded by renowned countryside walks with the Sandstone Trail, Peckforton and Beeston close by

See Matt's
Video
Tour



Unable to locate the property?

Try **what3words**

 [nametag.cushy.blankets](https://www.what3words.com)

The information Storeys of Cheshire has provided is for general informational purposes only and does not form part of any offer or contract. The agent has not tested any equipment or services and cannot verify their working order or suitability. Buyers should consult their solicitor or surveyor for verification. Photographs shown are for illustration purposes only and may not reflect the items included in the property sale. Please note that lifestyle descriptions are provided as a general indication. Regarding planning and building consents, buyers should conduct their own enquiries with the relevant authorities. All measurements are approximate. Properties are offered subject to contract, and neither Storeys of Cheshire nor its employees or associated partners have the authority to provide any representations or warranties.



Peckforton Hall Lane
Spurstow
CW6 9TF



storeysofcheshire.co.uk | hello@storeysofcheshire.co.uk | 01829 700 359

56c High Street, Tarporley CW6 0AG | 57 Church Street, Davenham CW9 8NF | 82a King Street, Knutsford WA16 6EG