



Bell Street, NW1

£3,100 Per calendar month

This two bedroom duplex flat is set within the upper maisonette of this period property in Marylebone. Positioned over the first and second floor, the flat further comprises an open plan reception room, kitchen, single bedroom and bathroom.

Bell Street is located moments from the shops, cafés, bars and restaurants found around Baker Street and Marylebone High Street. Regent's Park is also close by.

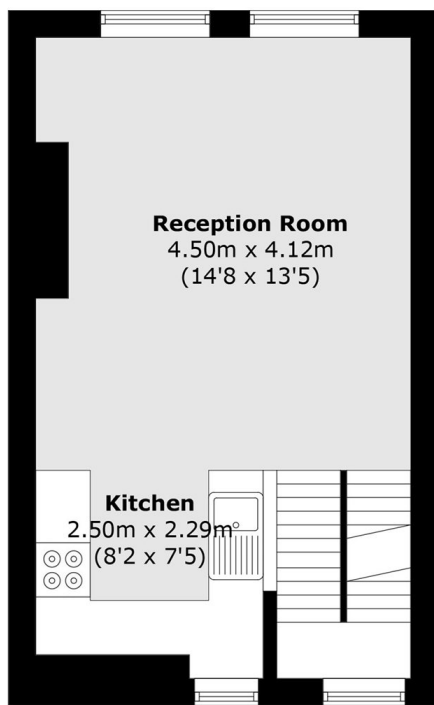
Features

- Two Bedroom Flat
- Duplex
- Open-Plan Living
- One Bathroom
- Private Entrance
- Furnished

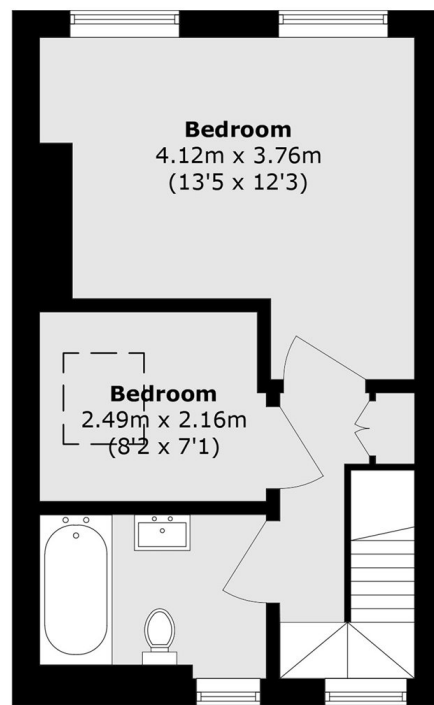
Bell Street, London, NW1



Ground Floor



First Floor



Second Floor

Total area (approx.): 62.5 sq. m (672.7 sq. ft)