



Crystal Palace Park Road, SE26 | Guide Price £450,000

020 8702 9333

crystalpalace@pedderproperty.com

pedder
We live local



In General

- 985 Sq Ft / 91.5 Sq M
- Characterful accommodation
- Backing onto Crystal Palace Park
- Two double bedrooms
- Eat-in kitchen
- No onward chain
- A share of the freehold

In Detail

£450,000 - £475,000

A light and bright two double bedroom top floor period conversion property forming part of a grand Victorian detached building, on a sought after road backing directly onto Crystal Palace Park.

This generously proportioned property occupies the entire second level and encompasses 985 sq ft / 91.5 sq m of neutrally decorated and spacious accommodation boasting a leafy green outlook, and available for sale with no ongoing chain. A 15ft reception room benefits from stripped wood flooring and a sunny southerly aspect which leads to a kitchen/ diner with room to entertain. The bedrooms are well appointed and could work well for those who wish to rent the second or benefit from an airy space with a home working study, if required. Further notable features include a separate WC, characterful (but not restrictive) eaves recesses, bathroom with a skylight window, a sizeable store room, direct access to a large attic, and a share of the freehold. Externally there is a large communal rear garden to be enjoyed on pleasant summer days.

Crystal Palace Park Road is convenient for access to both Penge East and West rail links, central Crystal Palace, the High Street, and 200 acres of parkland.

No onward chain.

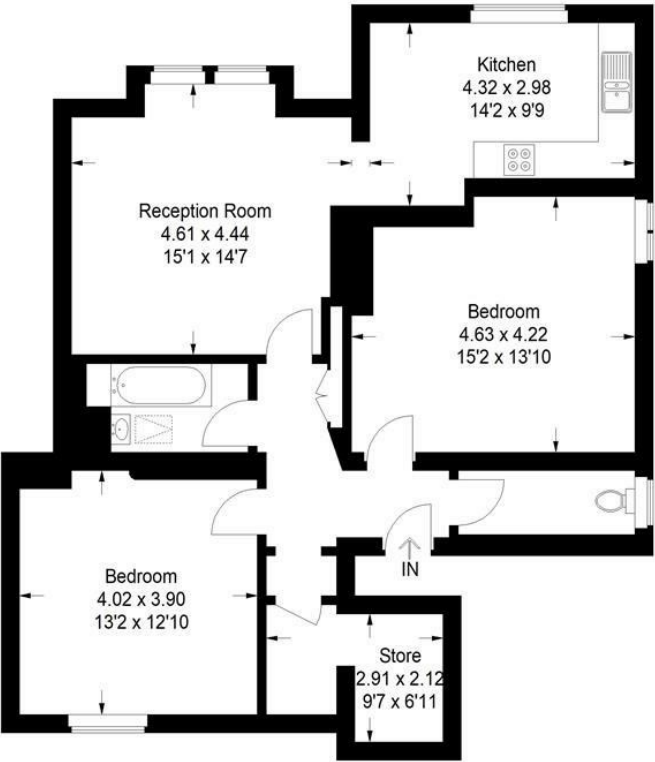
EPC: E | Council Tax Band: D | Lease: 88 years remaining | SC: £1800pa | GR: N/A | BI: £1021pa



Floorplan

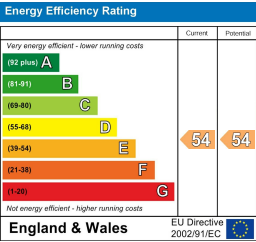
Crystal Palace Park Road, SE26

Approximate Gross Internal Area
91.5 sq m / 985 sq ft



Top Floor Flat

Copyright www.pedderproperty.com © 2023
These plans are for representation purposes only as defined by RICS - Code of Measuring Practice. Not drawn to Scale. Windows and door openings are approximate. Please check all dimensions, shapes and compass bearings before making any decisions reliant upon them.



Pedder Property Ltd trading as Pedder for themselves and for the vendor/landlord of this property whose agents they are, give notice that (1) these particulars do not constitute any part of an offer or contract, (2) all statements contained within these particulars are made without responsibility on the part of Pedder or the vendor/landlord, (3) whilst made in good faith, none of the statements contained within these particulars are to be relied upon as a statement of representation or fact, (4) any intending purchaser/tenant must satisfy him/herself by inspection or otherwise as to the correctness of each of the statements contained within these particulars, (5) the vendor/landlord does not make or give either Pedder or any person in their employment any authority to make or give representation or warranty whatsoever in relation to this property.