



 FINE &
COUNTRY

Chesham Heights
St. Monicas Road, Kingswood, KT20 6DF

Property at a glance

- First Floor One Bedroom Apartment - Available Mid July - Unfurnished
- Open Plan Living Room/Kitchen/Dining Room
- Spacious Double Bedroom With Fitted Wardrobes
- Modern Ensuite Bathroom
- Zoned Underfloor Heating Throughout
- Lift Access
- Allocated Parking Space
- Resident's Gymnasium
- Communal Gardens
- Walking Distance To Kingswood Village & Railway station

Setting

This spacious apartment is situated close to the village of Kingswood which provides a comprehensive parade of local shops, an Indian restaurant & The Kingswood Arms Public House. Locally there is a wide choice of state and independent schools

In terms of transportation, Kingswood Station provides services into London of approximately 45 minutes. The M25 is accessed via Junction 8, 1.7 miles to the south providing connections to the wider motorway network, whilst for the frequent flyer both Gatwick and Heathrow airports are within reach.

For golfers, there are four world-renowned golf clubs, Kingswood Golf and Country club, Surrey Downs, Walton Heath and the RAC golf club all close by. Horse Riding schools and stabling can be found in Kingswood, Chipstead, Tadworth and Walton on the Hill.

£1,475 Per Month

Chesham Heights

Situated within a secure gated development, this one bedroom apartment is ideally located within walking distance of Kingswood Village and Kingswood railway station.

The accommodation comprises of a welcoming entrance hall with a generous storage cupboard housing the washing machine. The impressive open-plan kitchen, dining and living area features a contemporary fitted kitchen with ample storage and integrated appliances, including a dishwasher, fridge/freezer and wine fridge.

The spacious double bedroom benefits from fitted wardrobes and access to a modern ensuite bathroom, which can also be conveniently accessed from the entrance hall.

The apartment enjoys tiled flooring throughout with zoned underfloor heating, providing both comfort and practicality.

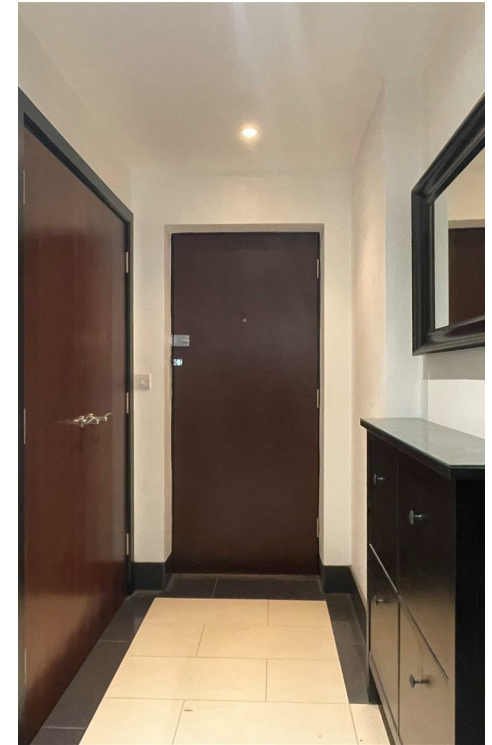
Residents further benefit from access to a communal gymnasium, lift service, well maintained communal gardens and an allocated parking space.

TERMS: Tenancy term to be agreed between Landlord and Tenant. Rent payable monthly in advance. The tenant is responsible for the cost of all utility bills applicable to this property and council tax. A security deposit will be required in cleared funds prior to the start of the tenancy, which will be lodged with the Tenant Deposit Scheme. Should a tenant need to be released early from the Tenancy this is subject to the Landlord being in agreement. Figures to be confirmed upon request. All other terms are subject to negotiation and agreement.

Available: Mid July - Unfurnished.

Deposit: £1,701.92

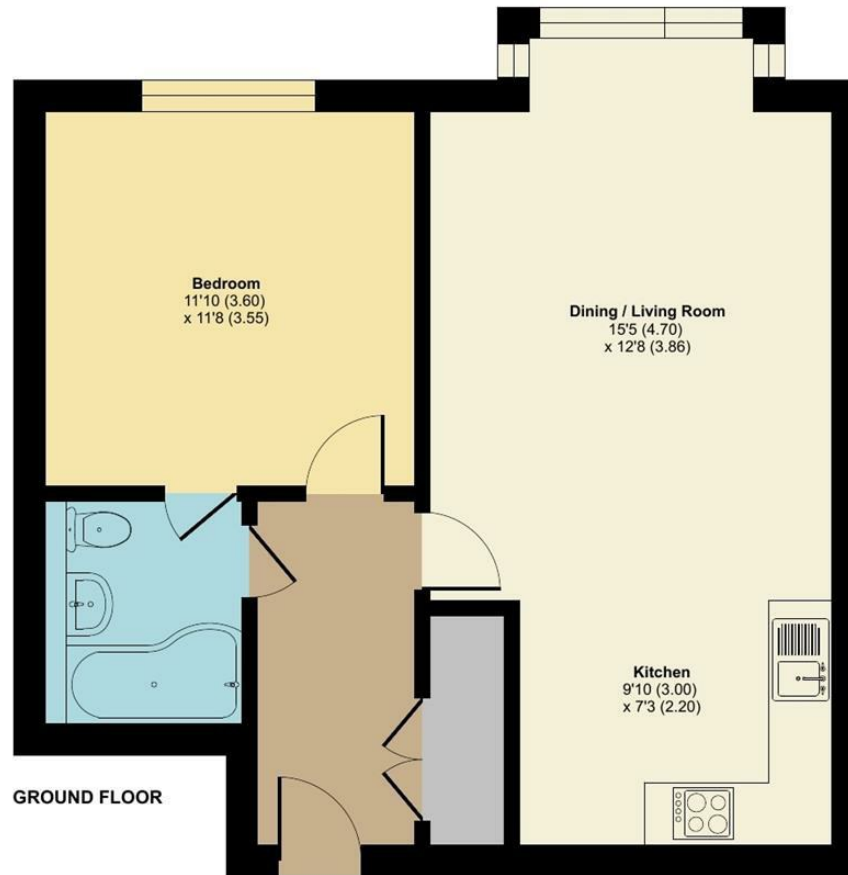
Tenancy: Long Term



Chesham Heights, St. Monicas Road, Kingswood, Tadworth, KT20

Approximate Area = 564 sq ft / 52.3 sq m

For identification only - Not to scale



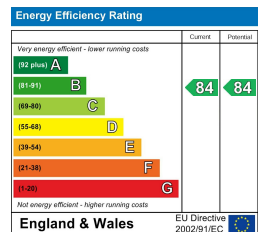
Floor plan produced in accordance with RICS Property Measurement 2nd Edition, Incorporating International Property Measurement Standards (IPMS2 Residential). © nichecom 2026. Produced for Fine & Country. REF: 1483619



All measurements are approximate and quoted in metric with imperial equivalents and for general guidance only and whilst every attempt has been made to ensure accuracy, they must not be relied on. The fixtures, fittings and appliances referred to have not been tested and therefore no guarantee can be given and that they are in working order. Internal photographs are reproduced for general information and it must not be inferred that any item shown is included with the property.

For a free valuation, contact the numbers listed on the brochure.

Viewings strictly via the vendor's agents Fine & Country on 01737 361014.





Fine & Country The Estate Office, Kingswood, Surrey, KT20 6HS
Tel: +44 (0)1737 361014
Email: kingswood@fineandcountry.com
Web: kingswood.fineandcountry.co.uk
Fine & Country Sales, Lettings, Land & New Homes

 **FINE &
COUNTRY** Kingswood