



## FAIRBOURNE ROAD, SW4

£685,000

- Penthouse
- Large roof terrace
- Integrated SMEG appliances
- Dedicated parking space
- Existing new build guarantee
- Energy rating: B





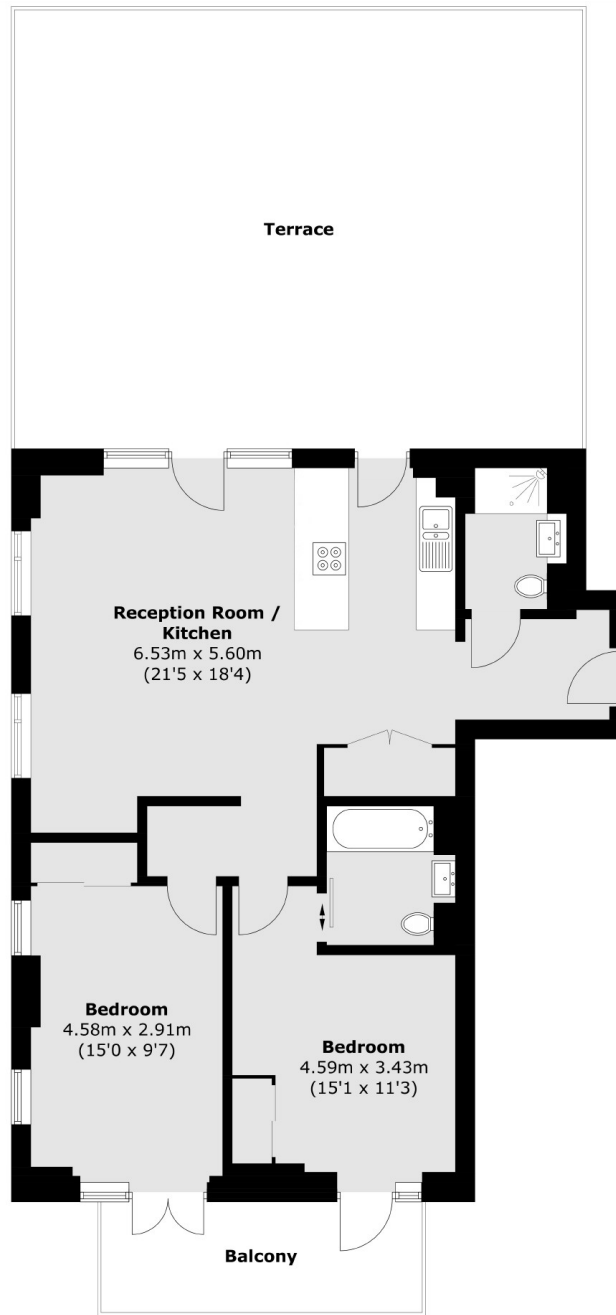
## ABOUT THE HOME

A stunning two bedroom penthouse in the Clapham Park development. The accommodation comprises two large double bedrooms with access to a double balcony, two bathrooms and a huge south-facing roof terrace directly off of the open plan living area. The apartment further benefits from a dedicated parking space within a gated underground carpark.

Fairbourne Road is located at the centre of the Clapham Park development within walking distance of the shops, bars and restaurants of Abbeville Village, Clapham Common and Clapham High Street. There are a number of transport options including Clapham South and Clapham Common (Northern line) Underground, and several regular bus routes into the City and to Brixton for the Victoria line and mainline services.







#### Fourth Floor

Total area (approx.): 80.2 sq. m (863.3 sq. ft)  
Balcony / Terrace area (approx.): 67.4 sq. m (725.5 sq. ft)

#### JACKSONS CLAPHAM

73 Abbeville Road, London,  
SW4 9JN  
Sales: 020 8487 3177  
Lettings: 020 8487 3178

Energy Rating: B We aim to make our particulars both accurate and reliable. However they are not guaranteed; nor do they form part of an offer or contract. If you require clarification on any points then please contact us, especially if you're traveling some distance to view. Please note that appliances and heating systems have not been tested and therefore no warranties can be given as to their good working order.