

## SHAKESPEARE ROAD, HANWELL

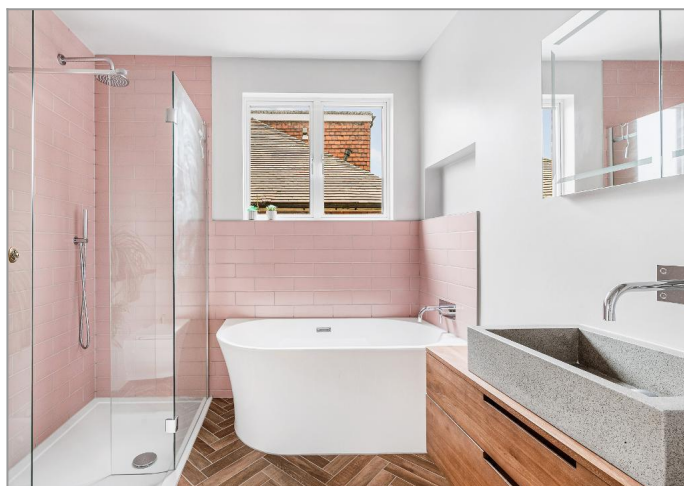


£1,575,000

Tuffin & Wren are truly privileged to offer this grand, redesigned period beauty situated within the highly sought-after 'Poets Corner'. Step inside this impressive Edwardian semi and the period details are immediate; think lofty ceilings, original mouldings and a hallway that sweeps you in with its room-sized generosity! Its extended, remodelled and now boasts close to 3000 sqft of living accommodation, with two separate reception rooms and an open-plan kitchen/dining room - the social hub of the home and the kind of space made for relaxed dinners, lazy brunches or homework. Upstairs you'll find six expansive bedrooms and luxe bathrooms that bring boutique-hotel sparkle, clean lines and high-end fittings to your everyday. Venture outside and there's a leafy, sizeable garden, an ample summer house and its secluded enough to feel like your own little retreat. A garage and driveway help complete the package, this is a home with history, heart and just the right amount of contemporary swagger!

# TUFFIN & WREN

*Independent Estate Agents*



## Further Information

For more details please call us on **020 8840 0993** or send an email to [homes@tuffin-wren.co.uk](mailto:homes@tuffin-wren.co.uk).

Please note it is not our company policy to test services, heating systems and domestic appliances, therefore we cannot verify that they are in working order. Prospective purchasers are advised to obtain verification from their solicitors and/or surveyors.

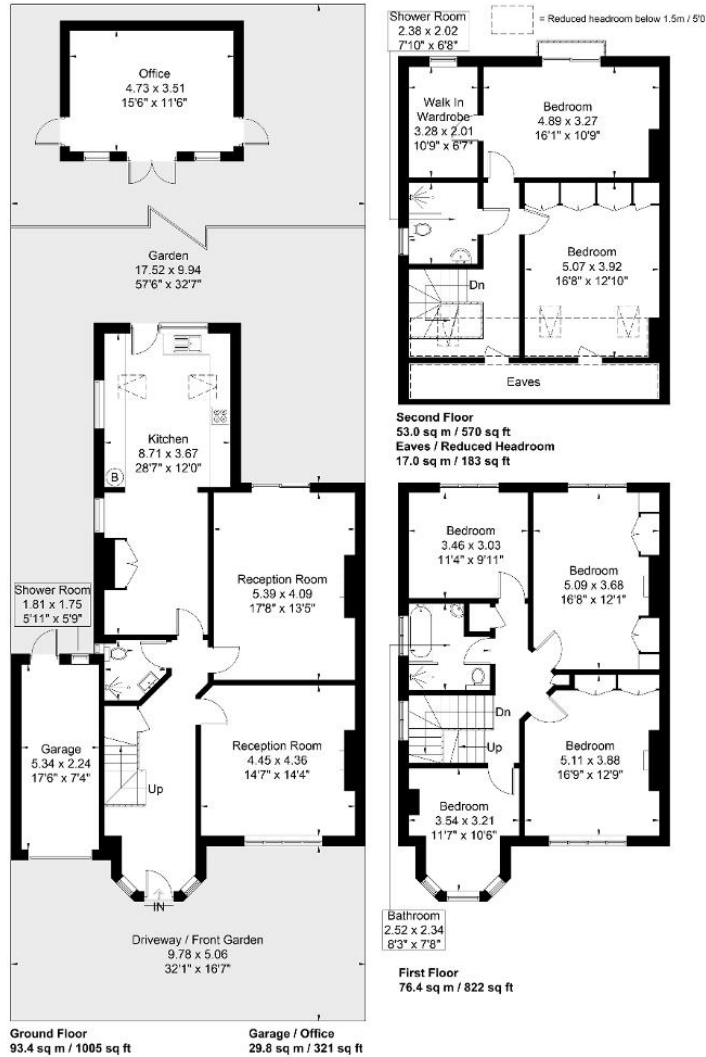
## Shakespeare Road

Approximate Gross Internal Area = 222.8 sq m / 2397 sq ft

Eaves / Reduced Headroom = 17.0 sq m / 183 sq ft

Garage / Office = 29.8 sq m / 321 sq ft

Total = 269.6 sq m / 2901 sq ft



Although every attempt has been made to ensure accuracy, all measurements are approximate.

The floorplan is for illustrative purposes only and not to scale.

© www.perspective.co.uk

Score	Energy rating	Current	Potential
92+	A		
81-91	B		
69-80	C		74 C
55-68	D	62 D	
39-54	E		
21-38	F		
1-20	G		