



Hengist Drive, Aylesford, ME20 7FF
Offers Over £400,000



We're delighted to introduce this beautifully presented THREE BEDROOM end-of-terrace home, located in the exclusive Ashlin Quarter development in Aylesford.

Built just five years ago and maintained in pristine, show-home condition, this stylish property offers contemporary living in a secure, gated community that provides both peace of mind and a sense of seclusion.

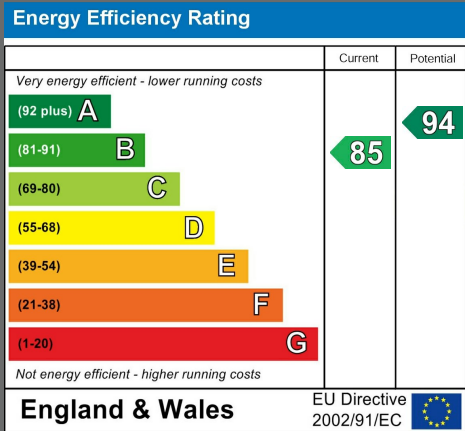
The house flows over 3 floors with the ground floor featuring a sleek open-plan layout with a modern, fully equipped kitchen, a bright and spacious living/dining area, and a convenient downstairs WC. French doors open onto a landscaped rear garden, ideal for relaxing or entertaining. The home also benefits from a private garage and driveway to the rear.

On the first floor, you'll find two generous double bedrooms and a family bathroom with both bath and shower. The entire top floor is dedicated to a luxurious master suite, complete with an ensuite bathroom . There is a small snug area before you go up the stairs which is via a door adding added privacy.

Perfectly located within walking distance of the train station and offering easy access to the M20, this home is ideal for commuters and families alike.

Don't miss your chance to view this exceptional property — get in touch today to arrange a viewing.

- End Of Terrace 3 Bedroom House
- Desirable Ashlin Quater
- Modern Throughout
- Bright And Airy Bedrooms
- 2 Bathrooms And Separate Cloakroom
- Master Bedroom To Top Floor
- Private Snug Area
- Private Garden
- Parking And Garage
- EPC Rating B





Local Information For Aylesford - Ashlin Quarter

Local Area Information On Aylesford - Ashlin Quarter development is situated on periphery of the historic village of Aylesford. The village has an 'old-world' charm, yet still caters for day to day needs, with a convenience store, bank, hair dressers, two pubs and a coffee shop with the village centre being approx 5 minutes walk.

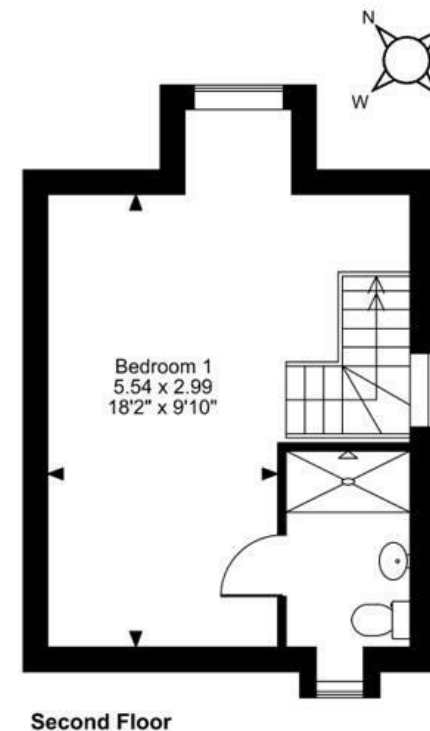
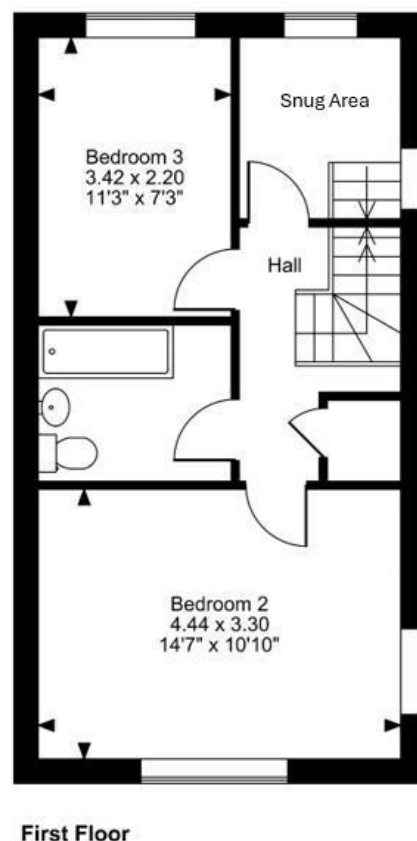
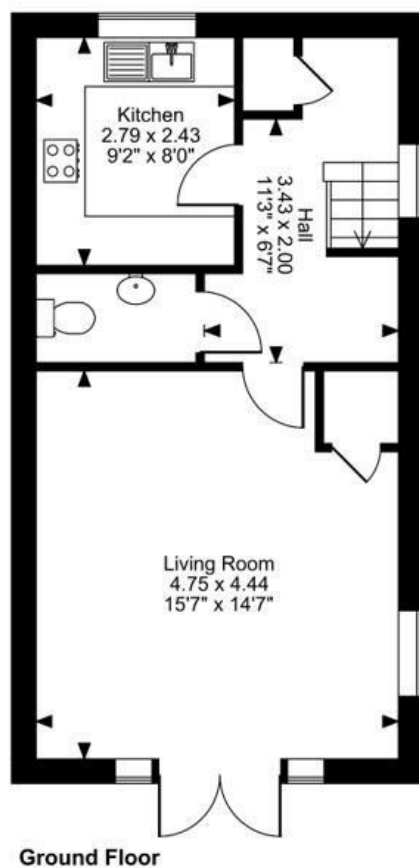
The property is conveniently located for road and rail links, the M20 can be accessed at Junctions 4 & 5 providing access to further road links and destinations such as Canterbury, Ebbsfleet station, Ashford International and the Channel Tunnel. Aylesford Station is located just minutes from the property and serves the Medway Valley line, connecting with Strood and Maidstone West. St Pancras can be reached in under an hour (changing at Strood).

ADDITIONAL INFORMATION

Freehold
Council Tax Band E
EPC Rating B
UPVC Double Glazing
Gas Central Heating



Hengist Drive, Aylesford, Kent
Approximate Gross Internal Area
1126 Sq Ft/105 Sq M



FOR ILLUSTRATIVE PURPOSES ONLY - NOT TO SCALE
The position & size of doors, windows, appliances and other features are approximate only.
© ehouse. Unauthorised reproduction prohibited. Drawing ref. dig/8652976/TOW

Page & Wells limited for themselves and for the vendors of this property whose agents they are give notice that: 1. These particulars do not constitute any part of, an offer or a contract. 2. All statements contained in these particulars as to this property are made without responsibility on the part of Page & Wells Limited or the Vendor. 3. None of the statements contained in these particulars as to the property is to be relied on as statements or representations of fact. 4. Any intending purchaser must satisfy himself by inspection or otherwise as to the correctness of each of the statements contained in these particulars. 5. The vendor does not make or give, and neither Page & Wells Limited nor any person in their employment has any authority to make or give any representation whatsoever in relation to this property. These particulars are supplied on the understanding that all negotiations are carried out throughout Page & Wells Limited. Properties with a reference prefixes EAA are those which Page & Wells Limited disclose an interest in accordance with the provisions of the Estates Agents Act 1979

