



10 Carew Way, Watford
£850,000



 fairfieldestates



10 Carew Way

Watford

Situated in a beautifully quiet cul-de-sac within the sought-after Grimsdyke Manor development, this impressive four-bedroom detached family home offers 1,725 square feet of thoughtfully designed living accommodation, ideal for modern family life.

Council Tax band: G

Tenure: Freehold

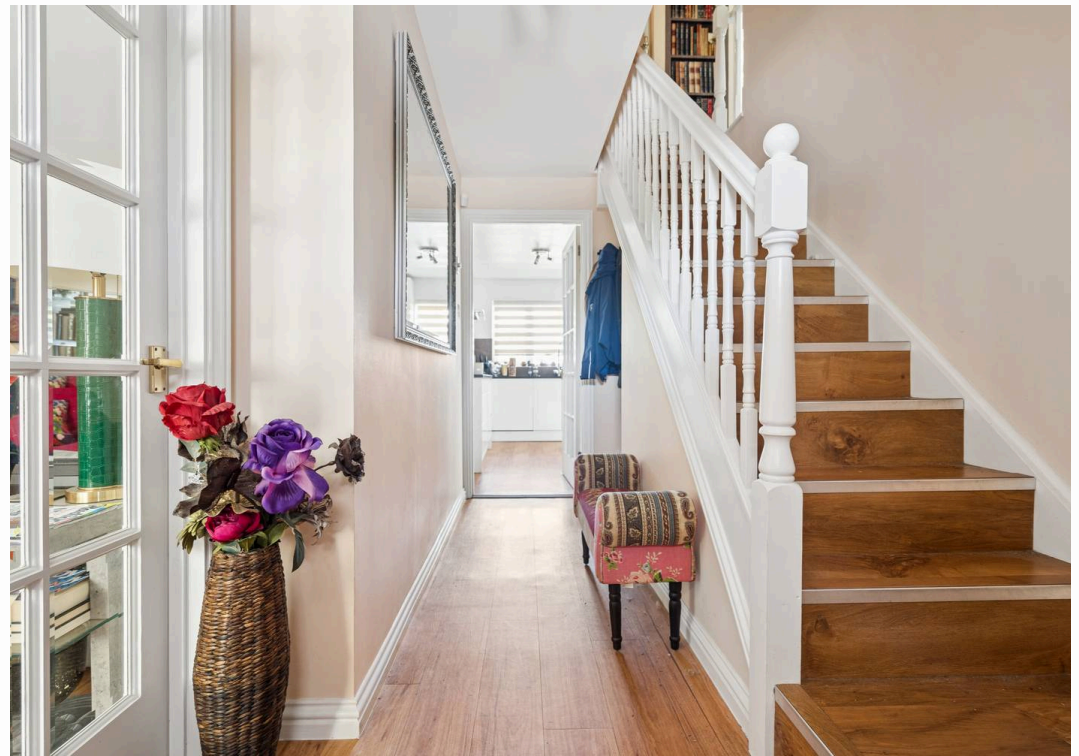
EPC Energy Efficiency Rating: C

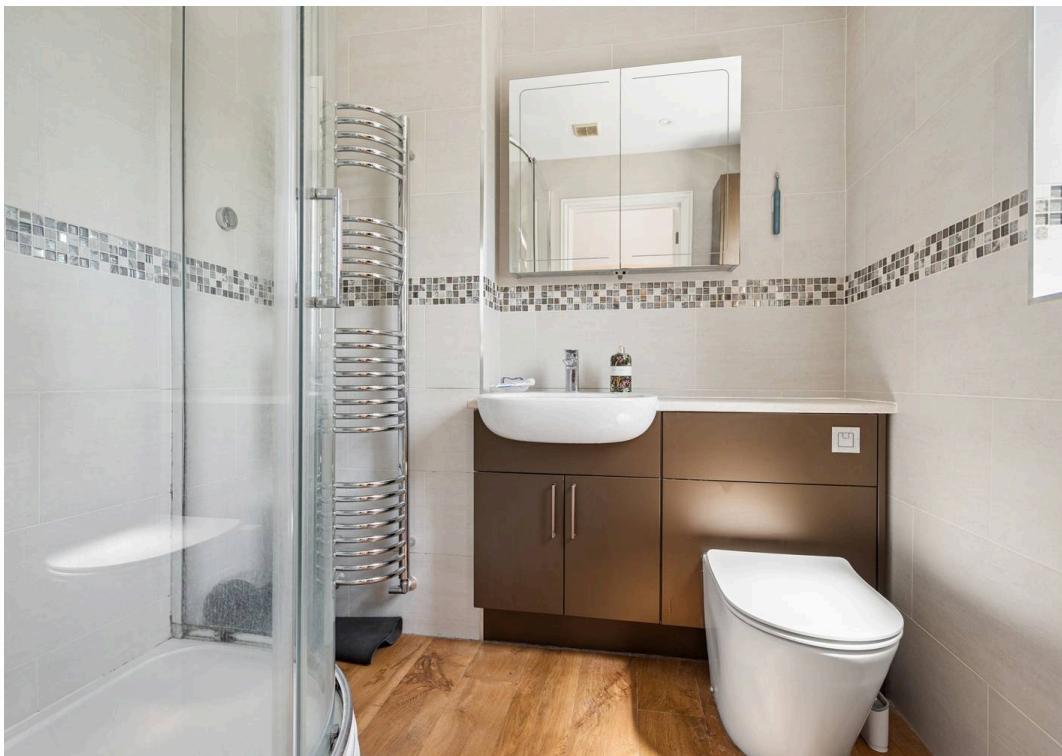
EPC Environmental Impact Rating:

- A BEAUTIFULLY QUIET CUL-DE-SAC LOCATION WITHIN THE GRIMSDYKE MANOR DEVELOPMENT
- DETACHED FAMILY HOME - 1,725 SQFT OF LIVING ACCOMMODATION
- FOUR DOUBLE BEDROOM'S / TWO BATHROOM'S
- PRINCIPAL BEDROOM WITH ENSUITE
- MODERN KITCHEN & BATHROOM'S
- GARAGE CONVERSION - ADDITIONAL RECEPTION ROOM / STUDY / GROUND FLOOR BEDROOM (5TH)
- DOUBLE GLAZED WINDOWS & GAS CENTRAL HEATING
- MODERN SOLAR PANELS (OWNED NOT LEASED)
- EPC RATING - C
- COUNCIL TAX BAND - G









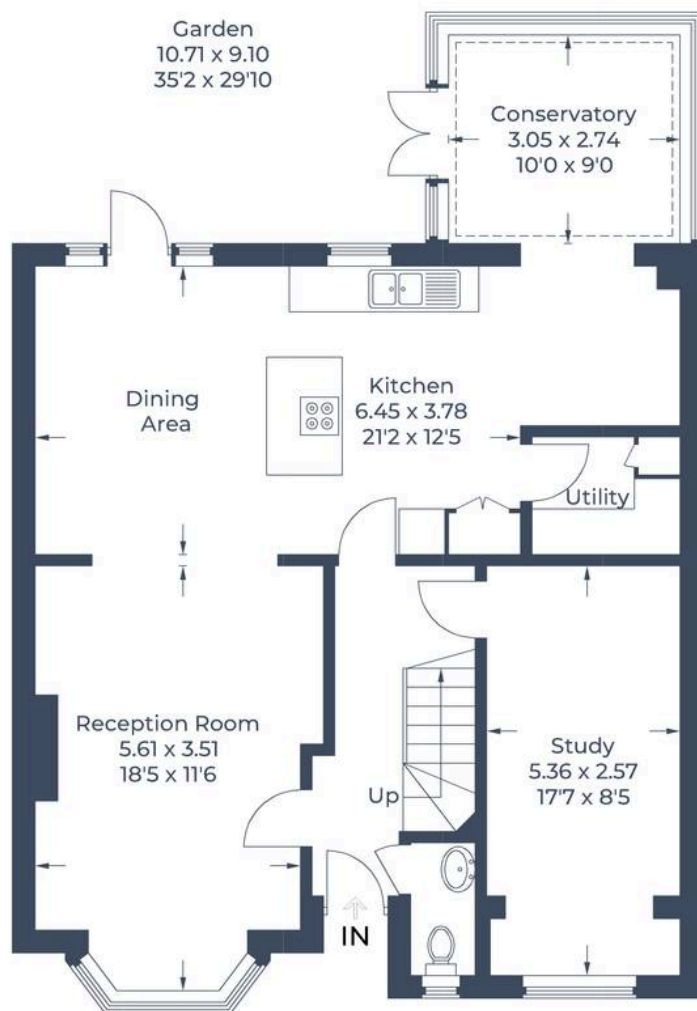








Approximate Gross Internal Area
Ground Floor = 87.1 sq m / 937 sq ft
First Floor = 73.2 sq m / 788 sq ft
Total = 160.3 sq m / 1,725 sq ft



Ground Floor



First Floor

Illustration for identification purposes only,
measurements are approximate, not to scale.
© CJ Property Marketing Produced for Fairfield Estates





Fairfield – Oxhey

1 Station Approach, Watford – WD19 7DT

020 8428 0540 • rob@fairfieldestates.co.uk • fairfieldestates.co.uk/

We have prepared these particulars as a general guide of the property and they are not intended to constitute part of an offer or contract. We have not carried out a detailed survey of the property and we have not tested any apparatus, fixtures, fittings, or services. All measurements and floorplans are approximate, and photographs are for guidance only. These should not be relied upon for the purchase of carpets or any other fixtures or fittings. Lease details, service