

Marshall Street, W1F

£1,153 Per week

Dexters



Marshall Street, W1F

A well presented, bright and spacious two bedroom two bathroom apartment at the popular Regent Lofts and Penthouses development in the heart of Soho.

The bright, well-appointed two double bedroom apartment offers contemporary loft style living, in the very heart of Soho.

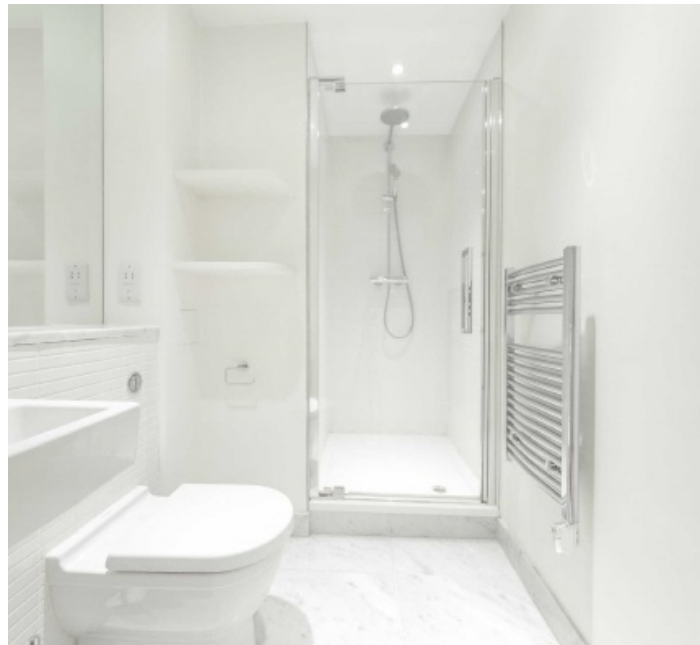
The exceptionally spacious and open living/dining room has limed wood floors and overlooks the courtyard and the sleek open plan kitchen has composite granite work surfaces and integrated appliances. There are two large double bedrooms with good storage and two bathrooms (one en suite).

Together with 24 hour concierge, all residents of the Regents Lofts have access to the Marshall Street Baths and leisure centre just next door.

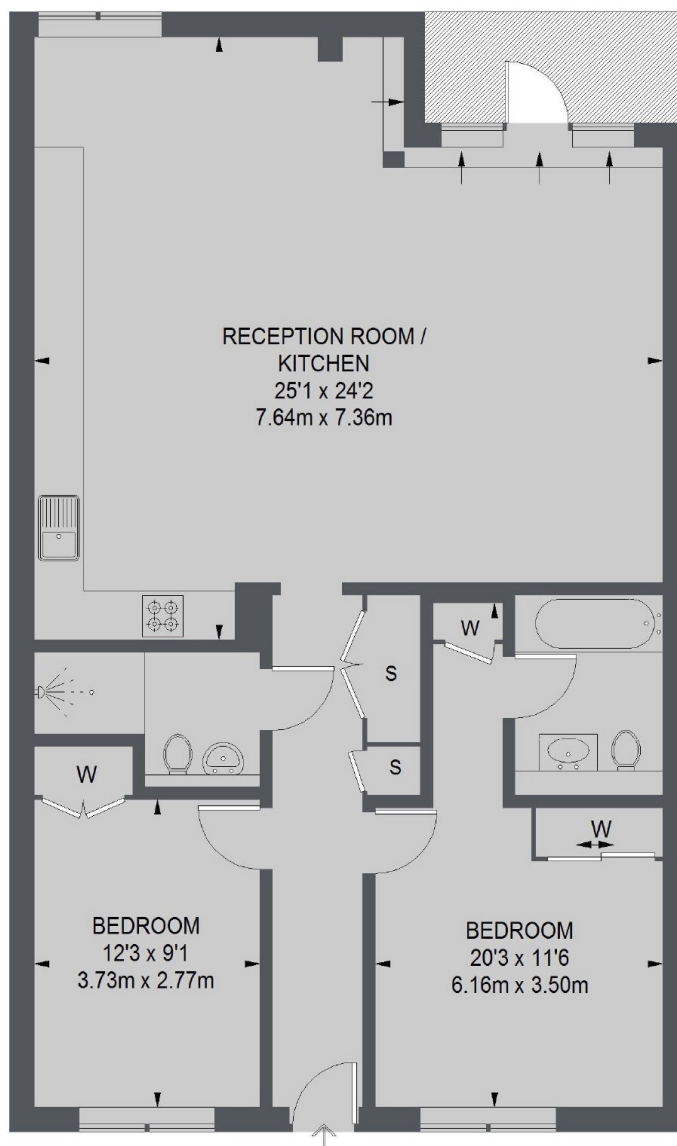
Regent Lofts is located just off Regent Street bordering Mayfair and Soho in the heart of London's West End, offering a variety of; shops, restaurants and bars. Carnaby Street and Piccadilly Circus are close by.

Features

- New Development
- 24 Hour Concierge
- Open Plan Kitchen
- Under Floor Heating
- Wood Floors
- Lift



Marshall Street, London, W1F



FIFTH FLOOR

TOTAL APPROX. FLOOR AREA
1032 SQ. FT. (95.92 SQ. M.)