



## Kitson Way, Harlow, CM20 1DR

**£1,100 Per month**

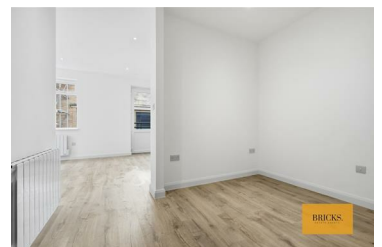


Bricks Estate Agents are delighted to present 9 Mitre Buildings, Kitson Way, Harlow, CM20 1DR – an exclusive collection of nine brand-new studio and one-bedroom apartments available to rent, thoughtfully designed for modern living.

This exceptional new development offers a rare opportunity to rent a beautifully finished home in a highly convenient central Harlow location. Each apartment has been carefully designed to provide stylish, low-maintenance living, ideal for professionals and commuters alike.

The interiors are bright and contemporary, with well-proportioned open-plan layouts that create a natural sense of space and flow. Wood-effect flooring runs throughout the living areas, complemented by recessed LED lighting and a neutral colour palette that enhances the modern aesthetic.

- Brand New Development Of Nine Studio And One Bedroom Apartments
- Contemporary Open Plan Living Spaces
- Integrated Oven And Hob Included
- Wood Effect Flooring Throughout Living Areas
- Prime Central Harlow Location
- Available To Rent Immediately
- High Specification Two Tone Fitted Kitchens
- Fully Tiled Modern Shower Rooms With Glass Enclosures
- Recessed LED Spotlights Throughout
- Walking Distance To Harlow Town Centre And Train Station



186 Queens Road, Buckhurst Hill, Essex, IG9 5BD

Tel: 0203 634 9998 Email: [hello@bricksestateagents.co.uk](mailto:hello@bricksestateagents.co.uk) [www.altosoftware.co.uk](http://www.altosoftware.co.uk)