



Lovelace Gardens, KT6

£210,000

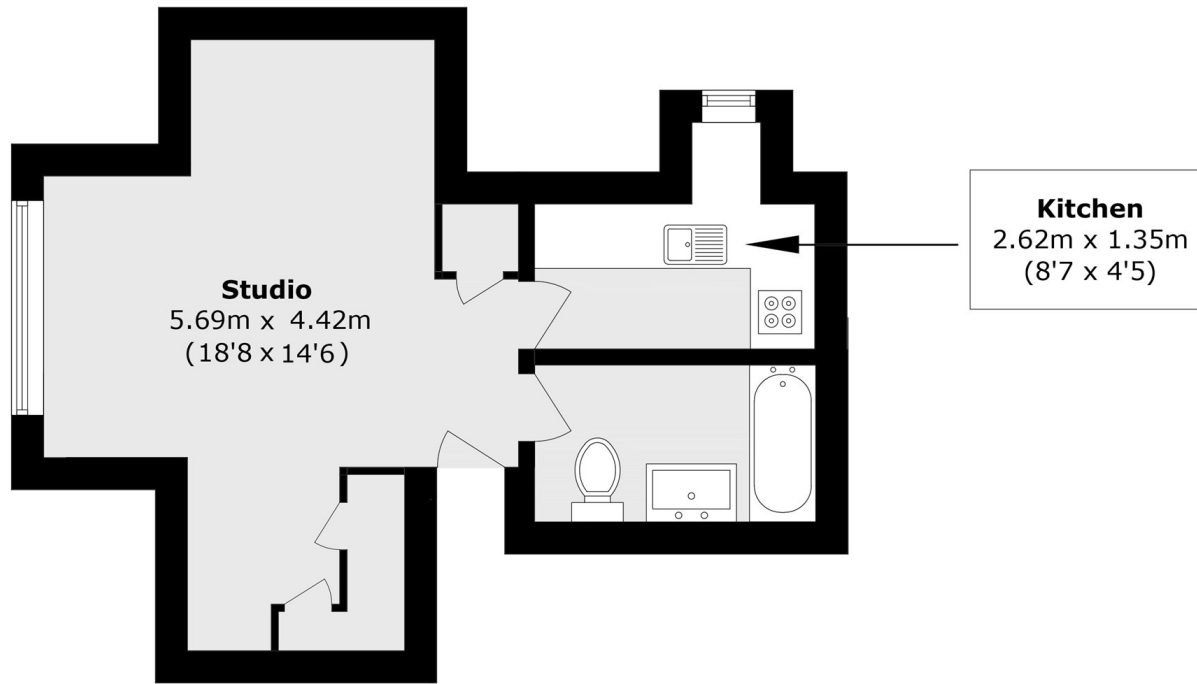
This studio apartment is set in a beautiful period property in the heart of Surbiton. It offers a spacious living/sleeping area, a separate kitchen, bathroom, a communal garden with BBQ area and off-street parking.

Lovelace Gardens is a peaceful tree lined street in the heart of Surbiton, approximately half a mile away from Surbiton mainline train station and its fast route to Waterloo in 15 mins and a vast selection of shops, bars and restaurants.

Features

- Period Property
- Studio Flat
- Top Floor Flat
- Share of Freehold
- Off Street Parking
- Great Location

Lovelace Gardens, Surbiton, KT6



Total area (approx.): 26.5 sq. m (285.2sq. ft)