



Murray Mews

London, NW1

Asking Price £1,250,000

Built by the owners' family is this charming four-bedroom mews house in a desirable location, complete with integral garage. The property requires modernisation throughout, however offers huge potential to be transformed into a wonderful home. The layout flows very well with a spacious reception room that leads directly out to the patio garden. The upper floor offers four bedrooms and a family bathroom. Furthermore, there is a separate WC and a small front garden.

Being sold chain-free.

CHESTERTONS



Murray Mews

London, NW1

- Huge Potential
- Patio Garden
- Garage
- Four Bedrooms
- Chain-free
- Rarely Available



Murray Mews is very well situated to take advantage of the excellent amenities of both Camden Town and the fantastic Kings Cross. It has a wonderful sense of community. Camden School for Girls is in close proximity.

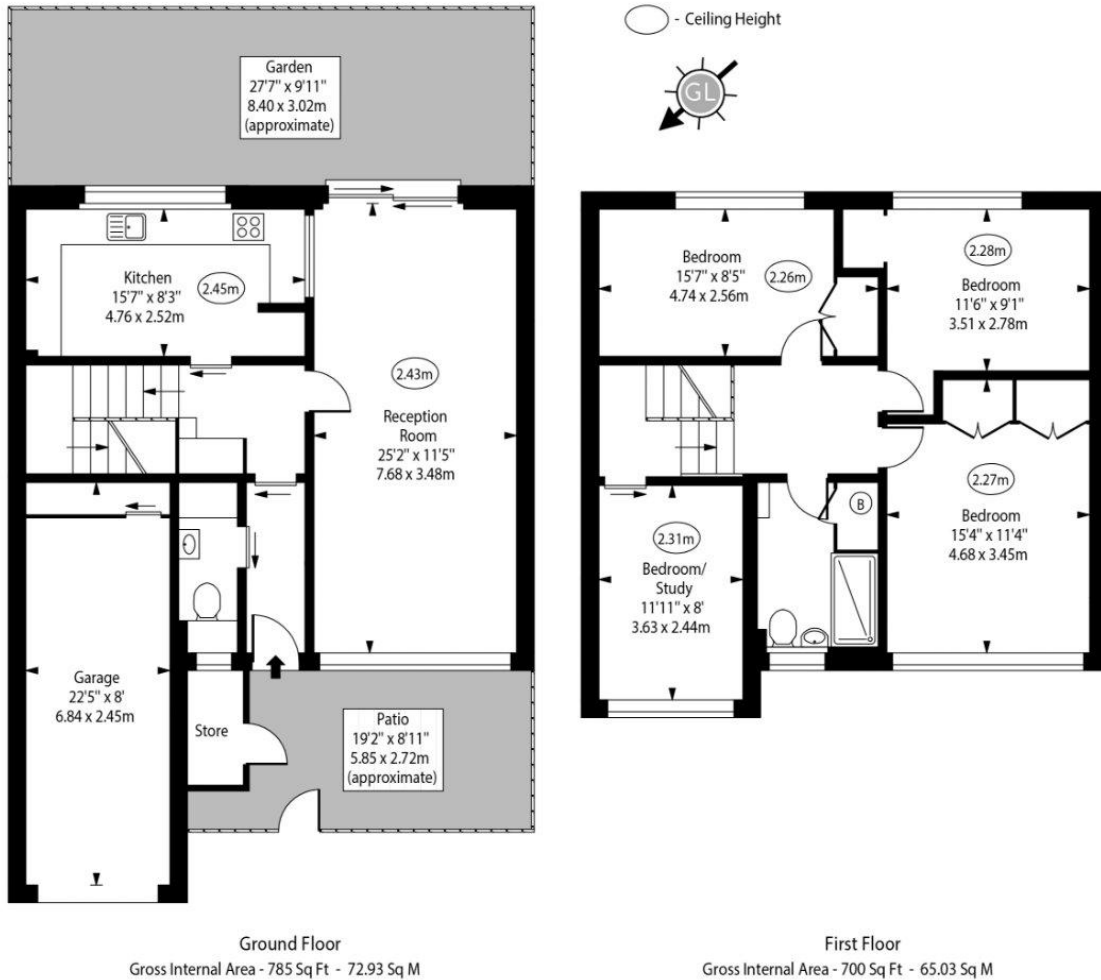
Tenure: Freehold
Service Charge: N/A
Ground Rent: N/A
Local Authority: Camden
Council Tax Band: G

Score	Energy rating	Current	Potential
92+	A		
81-91	B		84 B
69-80	C		
55-68	D	82 D	
39-54	E		
21-38	F		
1-20	G		

Chestertons Camden & Kentish Town Sales

99-101 Parkway
Camden
London
NW1 7PP
camden@chestertons.co.uk
020 7267 2053
chestertons.co.uk

Murray Mews



Approx Gross Internal Area 1485 Sq Ft - 137.96 Sq M
 (Including Garage)
 (Excluding Store)

Every attempt has been made to ensure the accuracy of the floor plan shown. However, all measurements, fixtures, fittings, and data shown are approximate interpretations and for illustrative purposes only. Measured according to the RICS. Not To Scale.
www.goldlens.co.uk
 Ref. No. 032132J

