



## Haydons Road, SW19

### £500,000

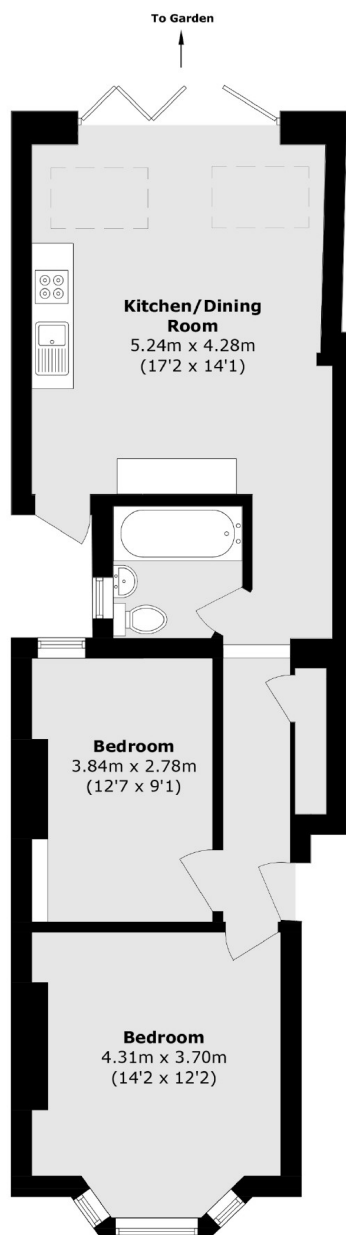
A two double bedroom, ground floor, extended Victorian conversion. The property has a large, extended kitchen/dining room with bifolding doors leading to a private garden in excess of forty feet.

Located on Haydons Road so very close to the Town Centre, the lovely South Park Gardens is not too far away and a number of stations including South Wimbledon (Northern Line) and Wimbledon (District Line, Mainline and Overground).

### Features

- Two Double Bedrooms
- Victorian Conversion
- Large Private Garden
- Ground Floor Flat
- Extended Kitchen/ Dining
- Long Lease

Haydons Road,  
London, SW19



Total area (approx.): 59.1 sq. m (636.1 sq. ft)

**Dexters**

Wimbledon  
12 The Broadway  
London  
SW19 1RF  
Sales  
020 8545 8580

Energy Rating: D. We aim to make our particulars both accurate and reliable. However they are not guaranteed; nor do they form part of an offer or contract. If you require clarification on any points then please contact us, especially if you're traveling some distance to view. Please note that appliances and heating systems have not been tested and therefore no warranties can be given as to their good working order.

 **RICS** | Regulated  
Estate Agent  
and Letting Agent

[dexters.co.uk](https://dexters.co.uk)