



Price
£360,000

Freehold

3x  1x  1x 

**Curling Tye, Basildon,
Essex, SS14**

OVER 60?

Secure this property
for up to **59% less!**

 **DOUGLAS
ALLEN**
Helping you move forwards



Main features

- **3 bedroom end of terraced house**
- **Driveway parking for multiple cars**
- **Walking distance to Basildon town centre and mainline station**
- **Well presented rear garden**

Accommodation

GROUND FLOOR

Entrance Hallway
Lounge: 18'0 x 12'4 (5.49m x 3.76m)
Kitchen/Dining Room : 17'9 x 9'7 (5.41m x 2.92m)

FIRST FLOOR

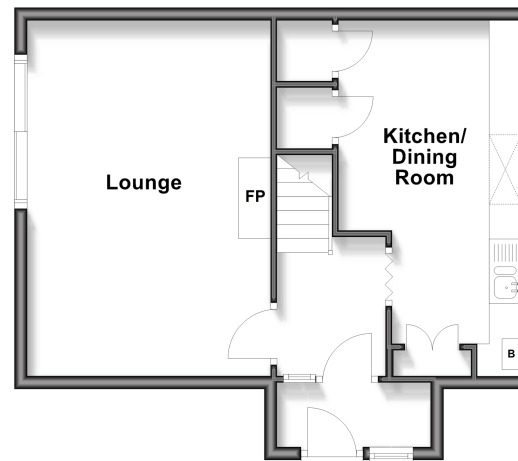
Landing
Bedroom 1: 12'7 x 11'8 (3.84m x 3.56m)
Bedroom 2: 9'4 x 0'0 (2.85m x 0.00m)
Bedroom 3: 8'4 x 8'3 (2.54m x 2.52m)
Wet Room

OUTSIDE

Driveway
Garage
Rear Garden

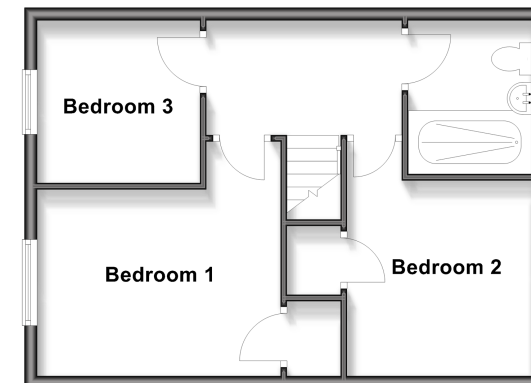
Ground Floor

Approx. 42.4 sq. metres (456.5 sq. feet)



First Floor

Approx. 42.4 sq. metres (456.5 sq. feet)



Call Basildon - 01268 293993 ■ douglasallen.co.uk

- A private rental licensing scheme applies to some properties in this area, please check with the Local Authority before proceeding
- Appliances & services are untested, dimensions are approximate and floor plans are not to scale

- Legal advice should be taken to verify fixtures/fittings, planning, alterations and/or lease details
- Through a Homewise Home For Life Plan people aged 60+ can secure this property for up to 50% less, by purchasing a Lifetime Lease

