

Holne Chase Morden, SM4 5QB

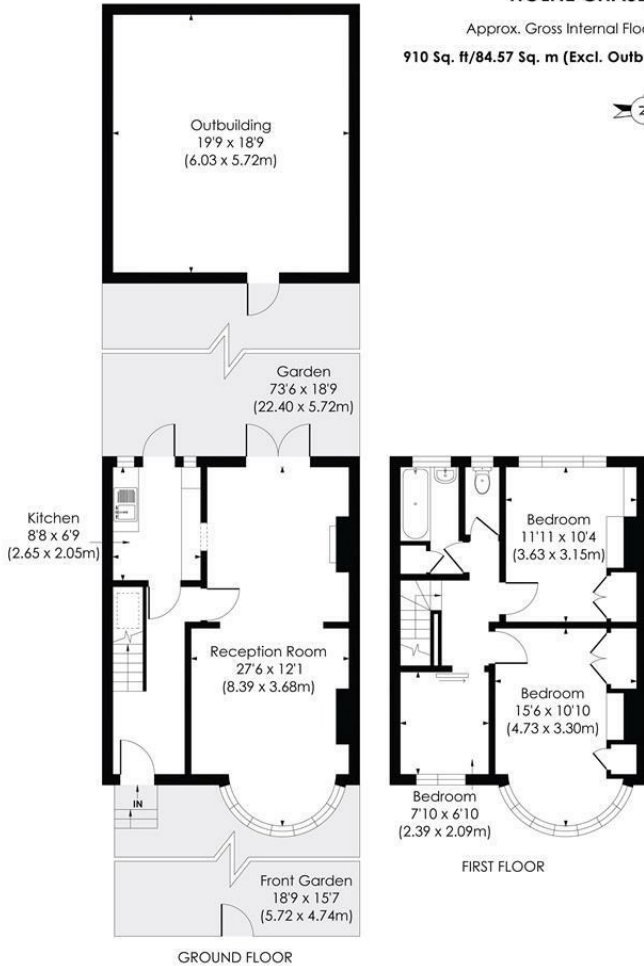
£525,000 Freehold



Three-bedroom 1930s mid-terrace family home offered with no onward chain. Enjoying open views over allotments and a semi-rural feel, the property offers excellent potential to modernise and extend (subject to the usual consents). Accommodation comprises a through reception room with sitting and dining areas, fitted kitchen, three bedrooms, bathroom, and separate W.C. Additional benefits include double-glazed windows, gas central heating, and original internal doors. Outside, there is a front garden and a private rear garden with lawn, patio, fruit trees, and established planting. A garage at rear of the property for two cars with renovation. Situated on a quiet residential road, the property is conveniently located for Morden town centre, Underground station, local schools, parks, and bus routes.

HOLNE CHASE, SM4

Approx. Gross Internal Floor Area
910 Sq. ft/84.57 Sq. m (Excl. Outbuilding)

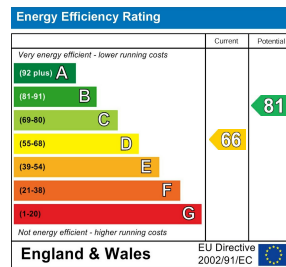
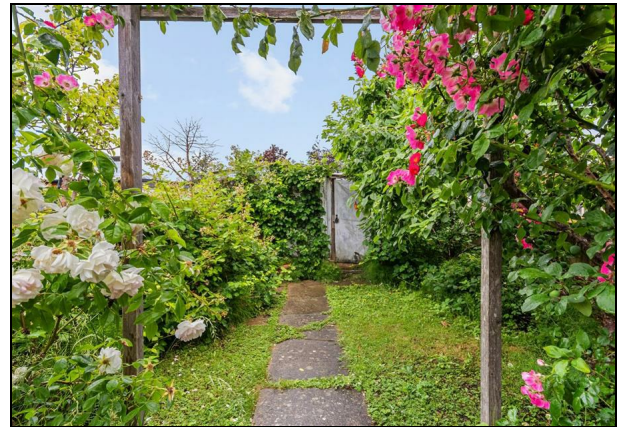


© Pixangle Property Marketing Ltd. info@pixangle.com Tel: 0208 870 2118



This floor plan has been prepared for the purpose of illustration only in accordance with the latest RICS code of measuring practice and is not to scale. All measurements and areas are approximate and whilst every effort has been made to ensure the accuracy of the plan contained here, no responsibility is taken for any error, omission or misstatement.

- Mid Terraced 1930's Family House
- Three Bedrooms
- Quiet Residential Road and close to Desirable Schools
- Garage at the rear of the property for two cars with renovation
- Open Views Over Allotments
- Close to Morden Underground Station & St Heliers Train Station
- Excellent potential for an extension at the rear of the property, plus loft conversion (STPP).
- No Onward Chain
- EPC- D
- Council Tax Band - D



For Free Mortgage Quote and Best Mortgage Rates, call Ellisons Mortgage Advisor on 0208 543 1166



Although these particulars are believed to be correct, their accuracy is not guaranteed and they do not form part of any contract.

Celebrating 30 years of successful Sales and Lettings in Merton

