



## Thorncliffe Road, SW2

£425,000

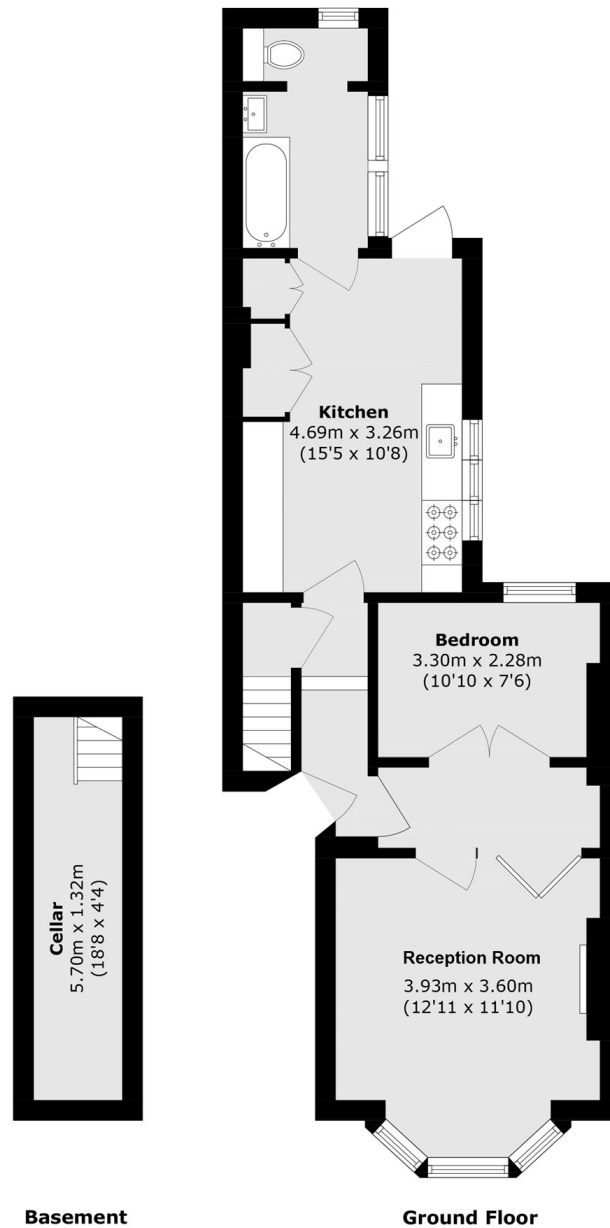
This wonderful ground floor period conversion is presented in excellent condition throughout, extends to a generous 699 sq.ft and has a private garden. The property comprises a spacious reception room featuring a fireplace and attractive bay window, a separate and well-appointed kitchen, a double bedroom, and a modern bathroom. While already naturally spacious, the property also offers further potential to extend into the side return, subject to the usual consents.

Thorncliffe Road is located close to the popular Abbeville Village, Clapham Common & Brixton. Transport links are excellent with regular bus services on Kings Avenue and both Clapham South and Clapham Common Stations (Northern Line).

### Features

- Ground Floor Conversion
- Open Plan Reception Room
- Two Bedrooms
- Private Garden
- Share Of Freehold
- Potential To Extend (STPP)

# Thorncliffe Road, London, SW2



Total area (approx.): 65.0 sq. m (699.7 sq. ft)