



Murray Street, NW1

£2,750 Per week

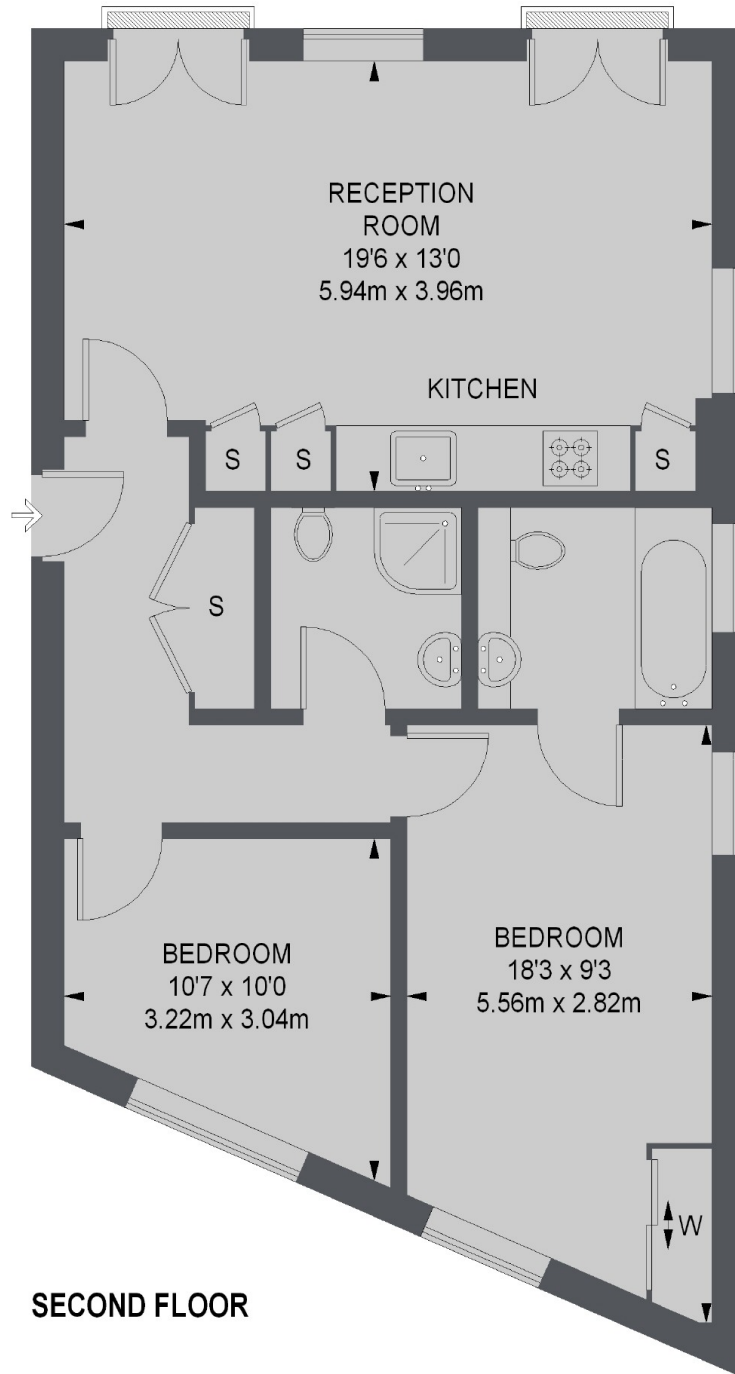
A bright and spacious contemporary one double plus one single bedroom apartment located in quiet residential street in Camden. The property offers a large reception room with wood flooring, a stylish fitted open-plan kitchen with integrated appliances and two modern bathrooms.

Belvard Point is ideally located for Camden Road and Camden Town stations within easy reach of the famous Camden Market.

Features

- Modern Apartment
- Good Location
- Two Bathrooms
- Stylish Interior
- Lift Access
- Juliet Balcony

Murray Street,
London, NW1



SECOND FLOOR

TOTAL APPROX. FLOOR AREA
671 SQ. FT. (62.3 SQ. M.)