

# SNELLERS

ESTATE AGENTS



## Wills Crescent, TW3

£650,000

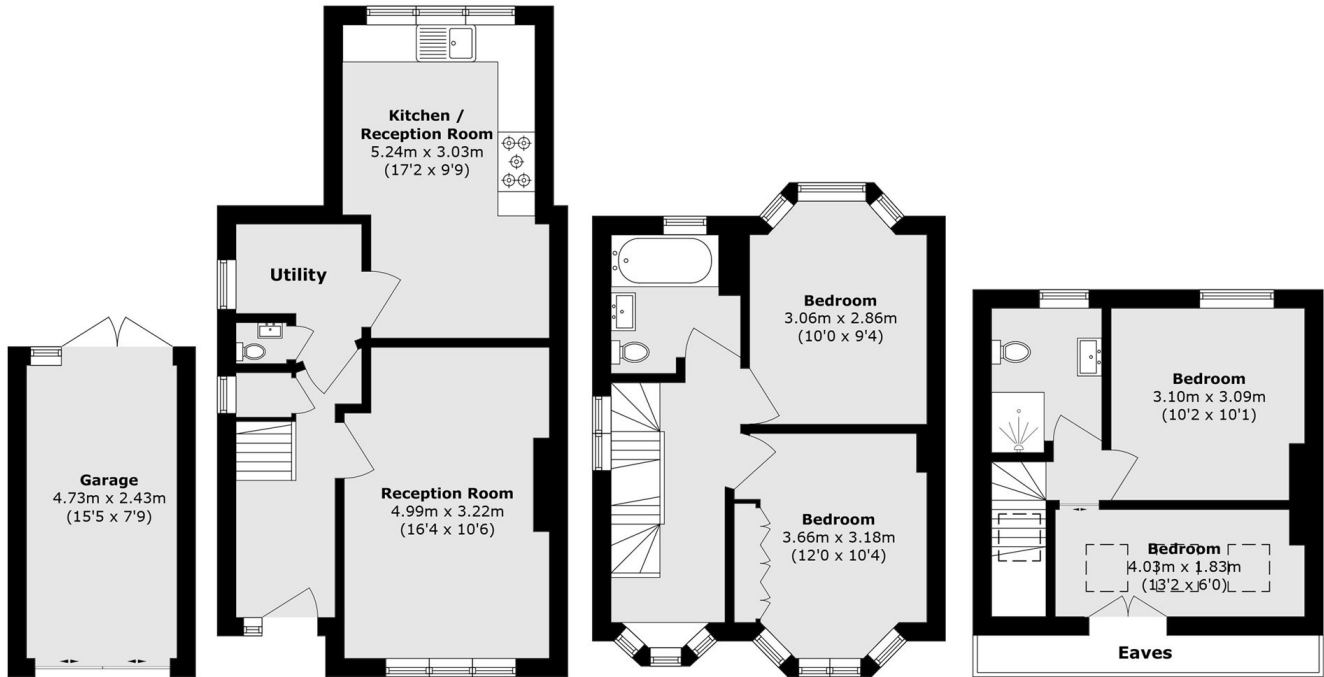
This 1930's end of terrace family home is well presented and is being offered with no onward chain. The property features four bedrooms, two reception rooms, good sized kitchen, utility room, mature rear garden, off street parking and a garage.

Wills Crescent is half mile from Murray Park and Hounslow Station. Nelson Primary School, St Edmunds Primary school and Whitton Station and high street are all also less than a mile's walk.

- Four Bedrooms • Rear & Loft Extended • End of Terrace •
- Detached Garage • Popular Location • Great School Catchment •

# SNELLERS

ESTATE AGENTS



Ground Floor

Ground Floor

First Floor

Second Floor

Total area (approx.): 103.6 sq. m (1115.1 sq. ft)

Garage area (approx.): 11.5 sq. m (123.8 sq. ft)

(Excluding Eaves)

Snellers Twickenham Sales  
64-66 Heath Road  
Twickenham  
TW1 4BX  
020 8892 5555  
twickenhamsales@snellers.co.uk

Energy Rating: D We aim to make our particulars both accurate and reliable. However they are not guaranteed; nor do they form part of an offer or contract. If you require clarification on any points then please contact us, especially if you're traveling some distance to view. Please note that appliances and heating systems have not been tested and therefore no warranties can be given as to their good working order