



Guide Price
£175,000

Freehold

2x  1x  1x 

-6 Clarence Road,
Ventnor, Isle of Wight,
PO38

OVER 60?

Secure this property
for up to **59% less!**

Pittis 
Helping you move forwards



Main features

- Ideal first time purchase or investment property
- Sought after location in Wroxall
- Off road parking and charming front courtyard garden
- Retaining many character features while offering modern stylish finishes

Accommodation

GROUND FLOOR

Lounge: 12'1 x 10'9 (3.69m x 3.28m)

Kitchen/Dining Room: 19'4 x 10'10 (5.90m x 3.30m)

FIRST FLOOR

Landing

Bedroom 1: 12'5 x 10'5 (3.79m x 3.18m)

Bedroom 2: 10'6 x 7'3 (3.20m x 2.21m)

Bathroom

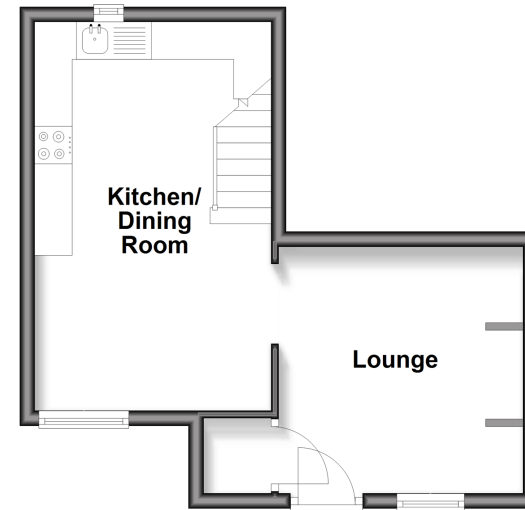
OUTSIDE

Driveway

Front Garden

Ground Floor

Approx. 28.4 sq. metres (305.3 sq. feet)



First Floor

Approx. 27.3 sq. metres (293.4 sq. feet)



Call Ventnor - 01983 856417 ■ pittis.co.uk

- If buying to let, the energy rating will need to be improved to at least 'E' rating before you can let the property
- Legal advice should be taken to verify fixtures/fittings, planning, alterations and/or lease details
- Appliances & services are untested, dimensions are approximate and floor plans are not to scale
- Through a Homewise Home For Life Plan people aged 60+ can secure this property for up to 59% less, by purchasing a Lifetime Lease



60802425/20260226/DW/CP