



*jordanfishwick*

Ashfell Court  
Chorlton



# Ashfell Court Chorlton M21 9HE

£1,225 Per Calendar Month



## The Property

\*\*\*\* AVAILABLE NOW \*\*\*\* This two double bedroom apartment benefits from off road parking & Garage. The Apartment is set within large, mature communal gardens and in the highly regarded Ashfell Court. Perfectly situated just a few minutes from Chorlton Village, Beech Road all local amenities and Transport links. This light bright flat is spacious throughout and will prove ideal for a young couple or single professional. On entrance there is a well maintained communal hallway leading to the Apartment entrance. Within the property there is a good sized entrance hall, the 16ft Lounge has a large double glazed window providing views over the gardens, modern fitted kitchen, two well proportioned double bedrooms, the main being 15ft, bathroom fitted with a three piece suite and there are multiple storage cupboards throughout. Electric underfloor heating and double glazing throughout completes the impressive specification. One parking space available.

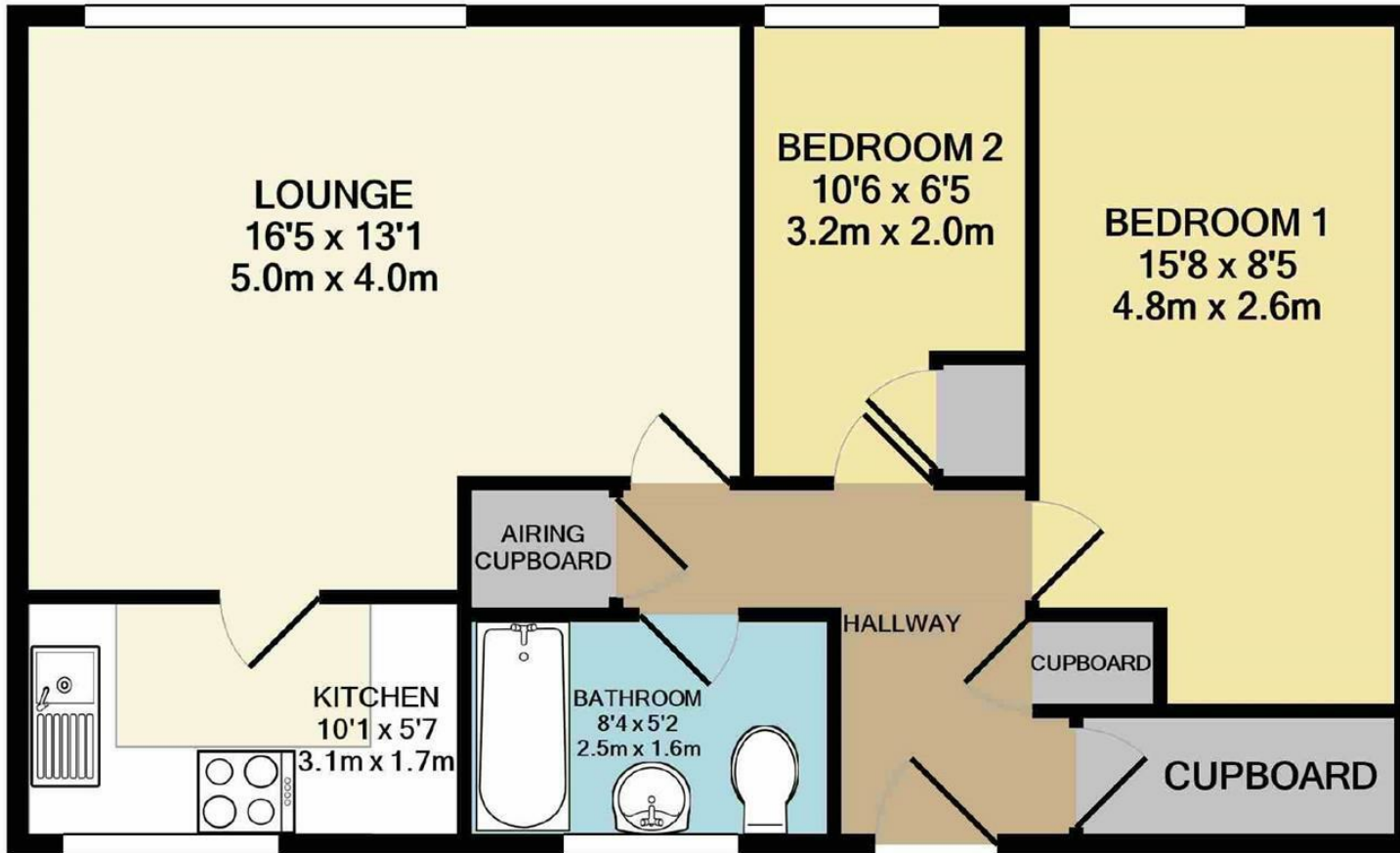
\*\*\*\*\* To arrange a viewing please call 016 860 4444 \*\*\*\*\*

## Directions

- Council Tax band B - EPC E
- 2 Double Bedrooms
- Unfurnished
- Ground Floor
- Spacious Accomodation
- Off road parking
- Available Now

Postcode - M21 9HE  
EPC Rating - E  
Floor Area - sq ft  
Local Authority - Manchester  
Council Tax - B





TOTAL APPROX. FLOOR AREA 584 SQ.FT. (54.2 SQ.M.)

Measurements are approximate. Not to scale. Illustrative purposes only

Made with Metropix ©2021



These particulars are believed to be accurate but they are not guaranteed and do not form a contract. Neither Jordan Fishwick nor the vendor or lessor accept any responsibility in respect of these particulars, which are not intended to be statements or representations of fact and any intending purchaser or lessee must satisfy himself by inspection or otherwise as to the correctness of each of the statements contained in these particulars. Any floorplans on this brochure are for illustrative purposes only and are not necessarily to scale.

Offices at: Offices at Chorlton, Didsbury, Disley, Hale, Glossop, Macclesfield, Manchester Deansgate, Manchester Whitworth Street, New Mills, Sale, Wilmslow and Withington

410-412 Barlow Moor Road, Chorlton, Manchester, M21

01618604444<sup>8AD</sup>

chorlton@jordanfishwick.co.uk  
www.jordanfishwick.co.uk