

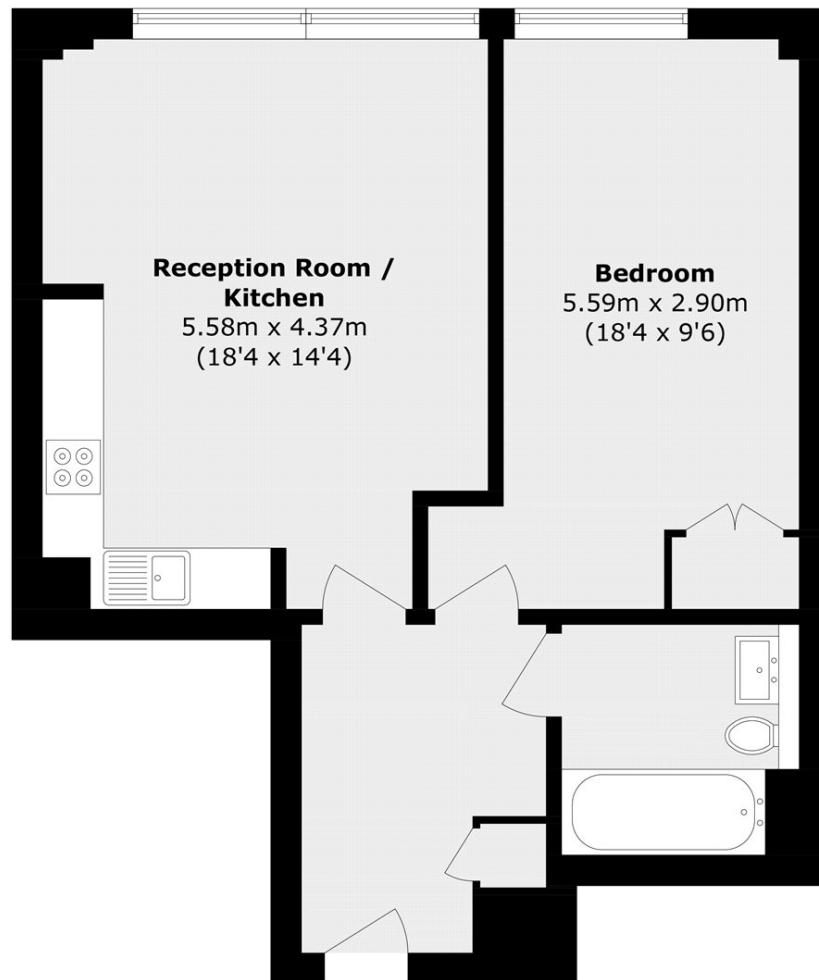


MARSH WALL, E14

£375,000

****OFFERS OVER £375,000**** A one bedroom apartment situated central to Canary Wharf. This property offers a bright, open plan kitchen/living area, featuring a full wall of floor-to-ceiling windows for views of Canary Wharf, a large double bedroom and a family bathroom.

- One Double Bedroom
- 24hr Concierge
- Resident Gym
- Comfort Cooling
- Transport Links
- Modern Design



Total area (approx.): 55.5 sq. m (597.4 sq. ft)

LiFE RESIDENTIAL

36 Millharbour, London, E14

9JS

Sales: 020 3668 1033

Lettings: 020 3668 1030

Energy Rating: C. We aim to make our particulars both accurate and reliable. However they are not guaranteed; nor do they form part of an offer or contract. If you require clarification on any points then please contact us, especially if you're traveling some distance to view. Please note that appliances and heating systems have not been tested and therefore no warranties can be given as to their good working order.