



Chadwick Crescent | Rugeley | WS15 3QW

£238,500

 **Webbs**  
estate agents

## Summary

**\*\* POPULAR VILLAGE LOCATION \*\* IDEAL FOR FIRST TIME BUYERS \*\* THREE BEDROOM SEMI DETACHED \*\* LARGE GARDEN \*\* MODERN FITTED KITCHEN \*\* LIVING DINING ROOM \*\* OFF ROAD PARKING \*\* VIEWING ADVISED \*\***

WEBBS ESTATE AGENTS are pleased to market this spacious, three bedroom semi detached home, located in the popular village of Hill Ridware on Chadwick Crescent. Viewing of the property is advised to appreciate not only the accommodation on offer, but also the size of the plot have a good size rear garden. Ideally suited to first time buyers looking to get their foot on the property ladder. Located close to amenities, transport links, countryside and much more! The internal accommodation briefly comprises; entrance hallway, living dining room, modern fitted kitchen, conservatory, downstairs cloakroom, three bedrooms and a family bathroom. The property also benefits from a off road parking for numerous vehicles.

## Key Features

- POPULAR VILLAGE LOCATION
- THREE BEDROOM SEMI DETACHED
- MODERN FITTED KITCHEN
- OFF ROAD PARKING
- DOWNSTAIRS CLOAKROOM
- IDEAL FOR FIRST TIME BUYERS
- LARGE GARDEN
- LIVING DINING ROOM
- CONSERVATORY
- VIEWING ADVISED

## Rooms and Dimensions

### Hallway

### Living Room

14'10 x 14'10 (4.52m x 4.52m)

### Kitchen

13'0 x 8'6 (3.96m x 2.59m)

### Conservatory

6'3 x 10'0 (1.91m x 3.05m)

### WC

5'4 x 3'7 (1.63m x 1.09m)

### Bedroom 1

11'11 x 14'11 (3.63m x 4.55m)

### Bedroom 2

12'10 x 8'6 (3.91m x 2.59m)

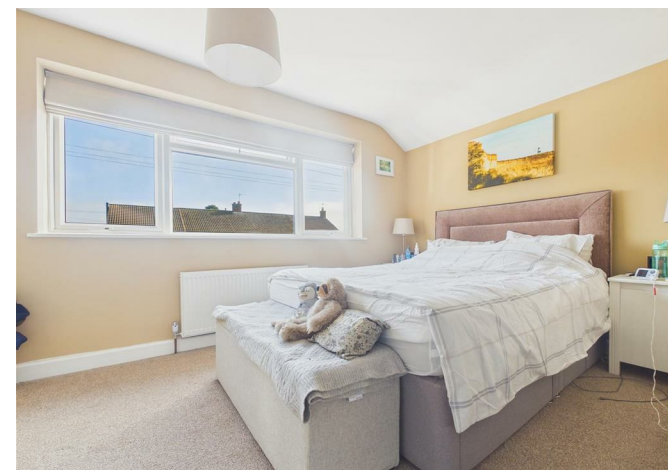
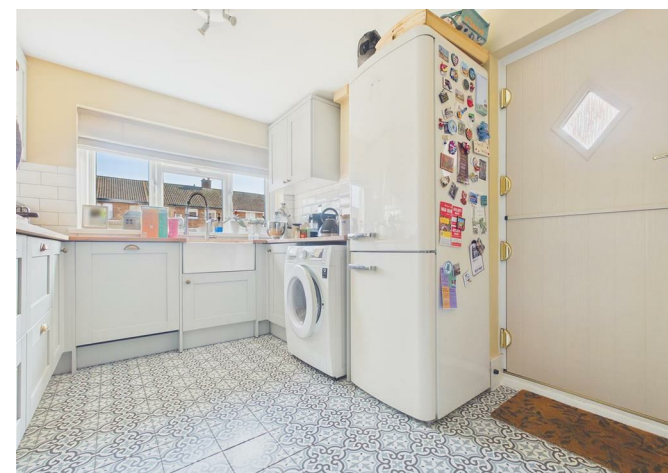
### Bedroom 3

12'9 x 6'1 (3.89m x 1.85m)

### Bathroom

6'3 x 5'6 (1.91m x 1.68m)

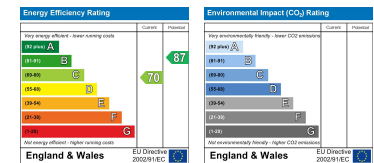
### IDENTIFICATION CHECKS - C







Webbs Estate Agents - endeavour to maintain accurate depictions of properties in Virtual Tours, Floor Plans and descriptions, however, these are intended only as a guide and purchasers must satisfy themselves by personal inspection.



Globe House Upper Brook Street, Rugeley, Staffordshire, WS15 2DN

Tel: 01889 583377 | Email: [rugeley@webbsea.co.uk](mailto:rugeley@webbsea.co.uk) | [www.webbestateagents.co.uk](http://www.webbestateagents.co.uk)

