



## THIMBLE MEWS

Camden Park, Tunbridge Wells



## A DETACHED MEWS STYLE HOUSE

Situated in most sought-after Camden Park. Believed to date back to the 1800's, the property has been thoughtfully updated by the current owners to offer beautifully presented accommodation arranged over two storeys with a wealth of period charm throughout.

   EPC  
4 3 3 D

Local Authority: Tunbridge Wells Borough Council

Council Tax Band: G

Tenure: Freehold

Services: Mains water, electricity and drainage. Gas-fired central heating.

Agent's Note: Approximately £300 per annum for general upkeep of Camden Park.

Postcode: TN2 4TN [what3words.com/token.herbs.chair](https://www.what3words.com/token.herbs.chair)



## THE PROPERTY

The open-plan kitchen/breakfast room is truly impressive with a range of stylish shaker units, stunning solid worksurfaces and a useful central island. There are three generous reception rooms, currently arranged as a sitting room, family room and conservatory with access out to the garden. A wonderful reception hall sits at the heart of the house, with a utility room and downstairs shower room completing the ground floor. The principal bedroom is situated on the first floor with a luxurious en suite shower room and a lovely outlook over the garden. There are three further bedrooms, served by an excellent family bathroom.

The property is approached along a driveway providing ample off-street parking. The garden is delightful with a mixture of gravel, paved areas and well-stocked, established borders – the ideal backdrop for al fresco dining and entertaining.





## SITUATION

Thimble Mews is ideally situated within prestigious Camden Park, just 0.6 of a mile from the mainline station with services to London Bridge from 42 minutes.

The historic High Street and Pantiles with its famous colonnades are both less than a mile away, with a variety of independent cafes, restaurants and boutiques on offer.

Tunbridge Wells is renowned for an excellent choice of schools in the state and private sectors including Rose Hill, The Mead and Holmewood House preparatories and nearby Claremont Primary School. Grammar schools for both boys and girls are an option for older children.

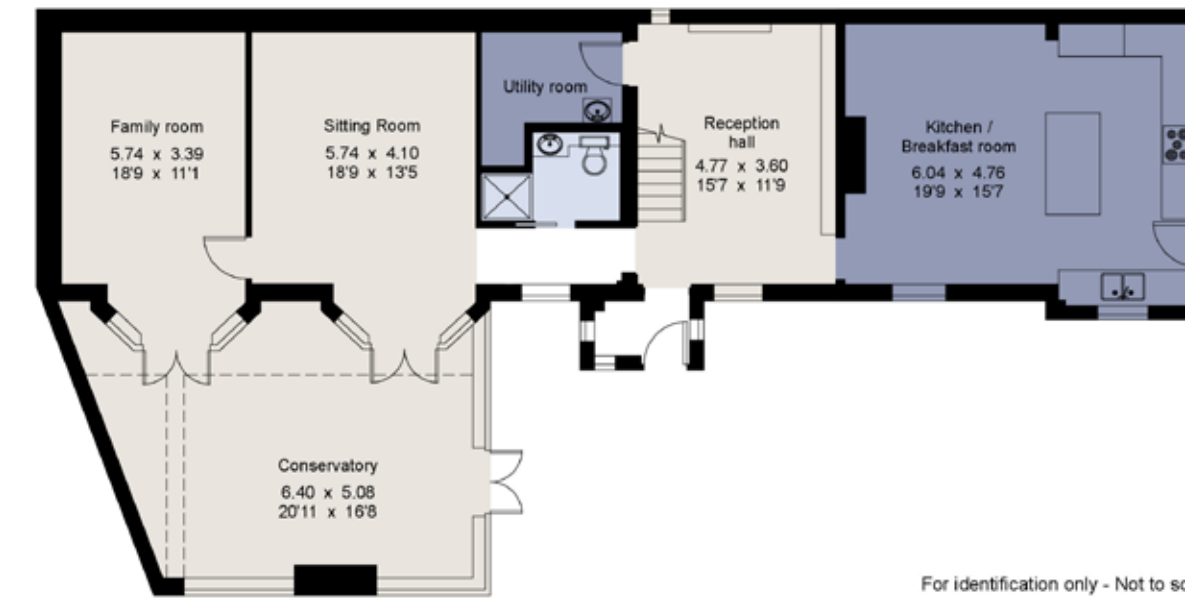




**Thimble Mews Camden Park, Tunbridge Wells**  
**Gross internal area (approx) 225.9 sq m/ 2,431 sq ft**



First floor



Ground floor

For identification only - Not to scale  
 © Trueplan (UK) Limited

This plan is for layout guidance only. Not drawn to scale unless stated. Windows and door openings are approximate. Whilst every care is taken in the preparation of this plan, please check all dimensions, shapes and compass bearings before making any decisions reliant upon them. (ID767266)

We would be delighted  
to tell you more.

**Ross Davies**  
01892 515035  
ross.davies@knightfrank.com

**Knight Frank**  
47 High Street, Tunbridge Wells  
Kent, TN1 1XL

[knightfrank.co.uk](https://www.knightfrank.co.uk)

Your partners in property

1. Particulars: These particulars are not an offer or contract, nor part of one. You should not rely on statements given by Knight Frank in the particulars, by word of mouth or in writing ("information") as being factually accurate about the property, its condition or its value. Neither Knight Frank nor any joint agent has any authority to make any representations about the property, and accordingly any information given is entirely without responsibility on the part of Knight Frank. 2. Material Information: Please note that the material information is provided to Knight Frank by third parties and is provided here as a guide only. While Knight Frank has taken steps to verify this information, we advise you to confirm the details of any such material information prior to any offer being submitted. If we are informed of changes to this information by the seller or another third party, we will use reasonable endeavours to update this as soon as practical. 3. Photos, Videos etc: The photographs, property videos and virtual viewings etc. show only certain parts of the property as they appeared at the time they were taken. Areas, measurements and distances given are approximate only. 4. Regulations etc: Any reference to alterations to, or use of, any part of the property does not mean that any necessary planning, building regulations or other consent has been obtained. A buyer must find out by inspection or in other ways that these matters have been properly dealt with and that all information is correct. 5. Fixtures and fittings: A list of the fitted carpets, curtains, light fittings and other items fixed to the property which are included in the sale (or may be available by separate negotiation) will be provided by the Seller's Solicitors. 6. VAT: The VAT position relating to the property may change without notice. 7. To find out how we process Personal Data, please refer to our Group Privacy Statement and other notices at <https://www.knightfrank.com/legals/privacy-statement>.

Particulars dated June 2026. Photographs and videos dated June 2024 and March 2026. All information is correct at the time of going to print. Knight Frank is the trading name of Knight Frank LLP. Knight Frank LLP is a limited liability partnership registered in England and Wales with registered number OC305934. Our registered office is at 55 Baker Street, London W1U 8AN. We use the term 'partner' to refer to a member of Knight Frank LLP, or an employee or consultant. A list of members names of Knight Frank LLP may be inspected at our registered office. If you do not want us to contact you further about our services then please contact us by either calling 020 3544 0692, email to [marketing.help@knightfrank.com](mailto:marketing.help@knightfrank.com) or post to our UK Residential Marketing Manager at our registered office (above) providing your name and address.