



## 4 Queningate Court, Havelock Street, Canterbury, Kent, CT1 1HB

£1,010 PCM

- STUDENT STUDIO
- CLOSE TO CHRIST CHURCH & CITY CENTRE
- 1 RECEPTION ROOMS
- FURNISHED PROPERTY
- NO PARKING AVAILABLE
- WIFI ENABLED
- 1 BEDROOMS
- BILLS PACKAGE AVAILABLE
- COUPLES WELCOME
- SHARED GARDEN



# 4 Queningate Court, Canterbury CT1 1HB

STUDENTS & PROFESSIONALS WELCOME - AVAILABLE 2026/2027 - WIFI INCLUDED

Just a stone's throw from Christchurch University and a short stroll to the city centre and bus station, this modern, stylish studio apartment is perfect for students.

Designed with students in mind, this property comes equipped with WIFI which is included in the price.

Apartment furnishings include double bed with storage, wardrobe, desk and chair, sofa and electrical sockets with USB charging points. The kitchen/Lounge area comes supplied with fridge/freezer, induction hob, electric oven, microwave, washer/dryer and a slimline dishwasher. The modern shower room well sleek and compact is fitted with a generous sized shower, wash hand basin and toilet.

\* A Bills included package is available if required (which is based on single occupancy and a minimum 12 month tenancy)\*

Don't delay, call today to arrange a viewing.

Council Tax Band for property is - Band A

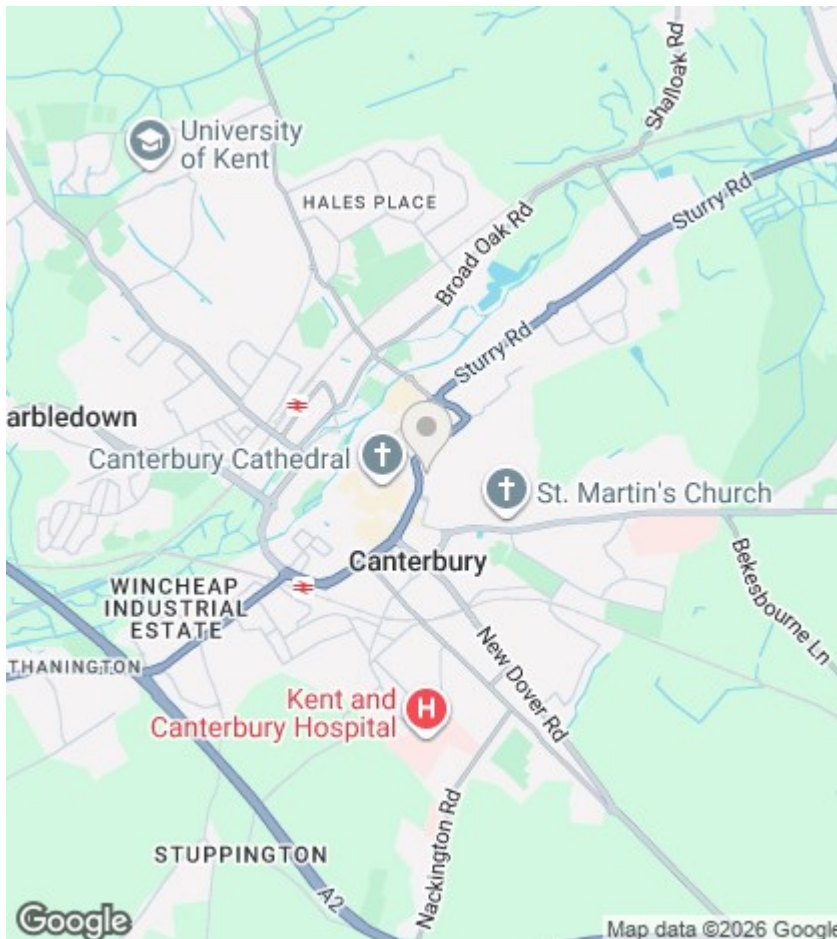


Council Tax Band: A









## Directions

## Viewings

Viewings by arrangement only. Call 01227788088 to make an appointment.

## EPC Rating:

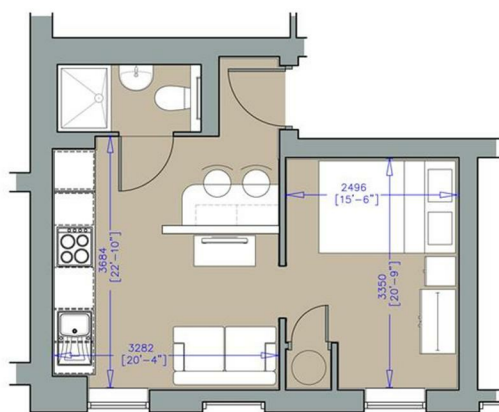
C

Energy Efficiency Rating		
	Current	Potential
Very energy efficient - lower running costs		
(92 plus) <b>A</b>		
(81-91) <b>B</b>		
(69-80) <b>C</b>	74	74
(55-68) <b>D</b>		
(39-54) <b>E</b>		
(21-38) <b>F</b>		
(1-20) <b>G</b>		
Not energy efficient - higher running costs		
<b>England &amp; Wales</b>	EU Directive 2002/91/EC	

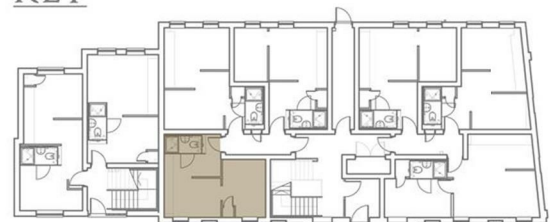
# QUENINGATE COURT

## HAVELOCK STREET CANTERBURY

4.



## KEY



## GROUND FLOOR

