



Elphinstone Road, Hastings TN34 2EQ

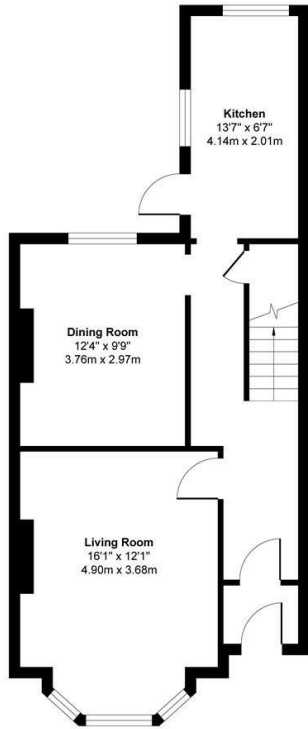
Offers in excess of £375,000



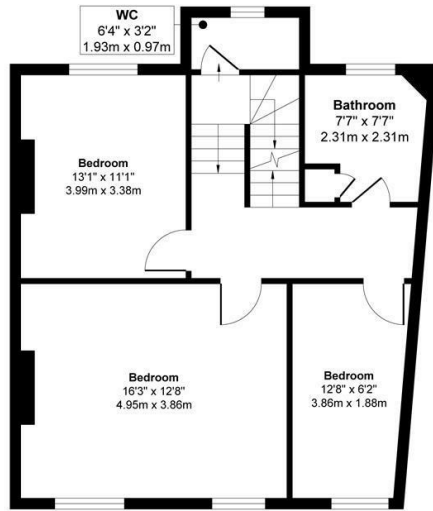
Spectacular VICTORIAN HOME set in a beautiful, PASTEL TERRACE just striking distance from Alexandra park with seven bedrooms and OFF ROAD PARKING. Found in a highly sought after BLACKLANDS LOCATION within walking distance to popular Schools, Hastings Town centre with its mainline railway station with connections to London, making this fantastic property PERFECTLY POSITIONED FOR FAMILY LIFE. Spanning THREE WELL APPOINTED STOREYS, the grand and period accommodation here offers a VERSATILE AND PRACTICAL SPACE, with the BAY FRONTED living room measuring 16'1 x 12'1 enjoy an OPEN FIREPLACE, with an additional reception room currently used as a dining room. The FITTED KITCHEN sit to the rear of the property offering ample storage and worktop space, providing access to the back garden. The SEVEN BEDROOMS are set across the two upper levels, together with a FAMILY BATHROOM and separate W/C. The property offers room for modernisation with all of the ORIGINAL FEATURES remaining intact. The rear garden is a particular feature here, there is a large courtyard which provides the ideal spot to DINE AL-FRESCO followed by an expanse of lawn accessed via some steps, while to the front of the property there is a DRIVEWAY offering off road parking for two vehicles and gated side access. This RARLEY AVAILABLE home is not to be missed.

Elphinstone Rd

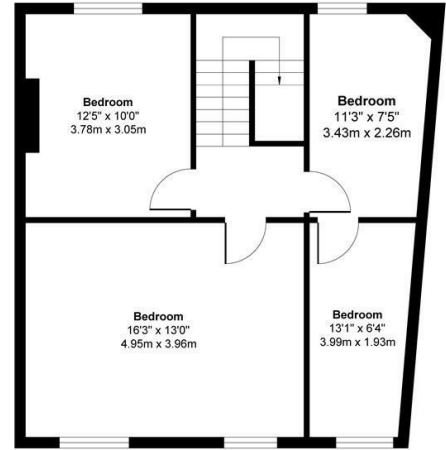
Approximate Gross Internal Floor Area
1796 sq. ft / 166.85 sq. m



GROUND FLOOR



FIRST FLOOR



SECOND FLOOR

Produced By Picpreview.co.uk Ltd.

