



Low Coldmartin

Wooler, Northumberland, NE71 6QP

Offers Over £450,000

A fabulous opportunity to purchase this charming detached cottage which is located in the secluded position with stunning open views of the surrounding countryside towards the Cheviot Hills. Low Coldmartin is set within 1.75 acres of gardens and grounds with informal cottage gardens with lawns, flowerbeds, shrubberies, vegetable plots, a fruit garden and a wood. There is a summerhouse taking advantage of the views over the gardens and the surrounding countryside.

The cottage has a detached annex which currently has a open plan living room/kitchen/bedroom and a separate shower room. The annex would make an ideal granny flat, a holiday let or as an office/studio.

Low Coldmartin cottage has spacious living accommodation with character and charm, which comprises of a lounge and a separate dining room, both with a log burning stoves and patio doors into a conservatory. Quality fitted grey shaker kitchen with appliances and a log burning stove. There is a modern bathroom with a four-piece suite, a separate toilet and a utility room. The cottage has three bedrooms, all with fitted wardrobes. The property benefits from full double glazing and solar panels.

Generous parking space for a number of vehicles and giving access to the garage. There is a range of garden sheds, fuel stores and a greenhouse.

Low Coldmartin is approximately two miles from Wooler where there is a variety of shops, sporting facilities, a doctors surgery and schooling. Berwick-upon-Tweed is 18 miles, Alnwick 15 miles and Newcastle-upon-Tyne is 46 miles.

In summary, this charming cottage presents an excellent opportunity for those seeking a secluded position within stunning open countryside views. The annex offers the potential to create a subsidiary income, or as a home office/studio. Do not miss the chance to make this delightful property your own, contact our Wooler office to arrange a viewing.



Entrance Hall

3'8 x 4'3 (1.12m x 1.30m)

Partially glazed entrance door giving access to the hall which has a built-in pantry cupboard and a shelved double storage cupboard. Door to the kitchen.

Kitchen

14'7 x 10' (4.45m x 3.05m)

Fitted with a superb range of light grey wall and floor shaker style units which includes a double glass display cabinet and solid wooden worktop surfaces with a tiled splashback. Built-in four ring gas hob with a cooker hood above. Built-in microwave, an oven and an integrated fridge and dish washing machine. White ceramic one and a half bowl sink and drainer below the window to the rear. Log burning stove containing an oven Door to the dining room and steps to the internal hall. Eight power points.

Dining Room

14'9 x 15'8 (4.50m x 4.78m)

A spacious dual aspect reception room with double patio doors to the conservatory and a window to the front. Attractive fireplace with a tiled hearth and a log burning stove. Double patio doors to the conservatory and six power points.

Conservatory

7' x 11'5 (2.13m x 3.48m)

Glazed on three sides enjoying the views of the garden and the surrounding countryside. Patio door giving access to the rear garden.

Lounge

14'1 x 15'4 (4.29m x 4.67m)

A spacious reception room with a window at the front and double patio doors to the conservatory. Log burning stove sitting on a raised hearth. Three ceiling lights and a television point. Four power points.

Conservatory

7'2 x 11'5 (2.18m x 3.48m)

Glazed on three sides overlooking the garden to the rear and the views of the surrounding countryside. Patio door giving access to the rear garden, two wall lights and eight power points.

Bathroom

11'1 x 6'8 (3.38m x 2.03m)

Fitted with a quality white four-piece suite which includes a shower cubicle, a toilet, a bath with a shower attachment and a wash hand basin with a mirror and shaver socket above. Wall fan heater, a heated towel rail, access to the loft and a frosted window to the rear.

Bedroom 1

11' x 13'4 (3.35m x 4.06m)

A double bedroom with built-in wardrobes on one wall offering excellent storage. Two windows at the rear, a built-in storage cupboard and six power points.

Bedroom 2

8'8 x 13'3 (2.64m x 4.04m)

A double bedroom with a built-in double and single wardrobe with cupboard space above. Two windows at the rear, a night storage heater and four power points.

Bedroom 3

5'6 x 10'2 (1.68m x 3.10m)

A single bedroom with a double wardrobe with extra cupboard space above. Electric panel heater, a window at the front and two power points.

Rear Hall

2'7 x 8' (0.79m x 2.44m)

Glazed entrance door to the side and a built-in shelved storage cupboard.

Toilet

6'3 x 2'9 (1.91m x 0.84m)

White toilet and a window to the side.



Utility Room

6'1 x 8'2 (1.85m x 2.49m)

Fitted with a range of wall and floor storage cupboards, plumbing for an automatic washing machine and space for a tumble dryer. Window at the front and five power points.

Annex

Bedroom/Living Room/Kitchen

10'2 x 22'9 (3.10m x 6.93m)

A superb open plan room with pine panelled walls and two windows to the front and an entrance door and a window to the rear. The kitchen area has storage cupboards, a stainless steel sink and drainer, a built-in fridge, washing machine and oven. Access to the loft.

Shower Room

5'9 x 5'2 (1.75m x 1.57m)

Fitted with a white suite which includes a corner shower cubicle, a toilet and a wash hand basin with a mirror above. Heated towel rail.

Garage

A timber detached garage.

Gardens and Grounds

The cottage is set within approximately 1.75 acres of gardens and grounds. There is ample parking on a driveway for a number of vehicles and giving access to the garage. Stunning gardens surrounding the property with mature flowerbeds and shrubberies, lawns, a vegetable plot, fruit trees and a summerhouse enjoying the views over the garden and the open countryside. The cottage also has a woodland, a fuel store, a greenhouse and various garden sheds.

General Information

Full double glazing.

All fitted floor coverings are included in the sale.

Services - Mains electric. Drainage into a septic tank, private water supply.

Tenure - Freehold.

Council Tax Band-D.

Energy Rating B.

Agency Information

OFFICE OPENING HOURS

Monday - Friday 9.00 - 17.00

Saturday 9.00 - 12.00

FIXTURES & FITTINGS

Items described in these particulars are included in sale, all other items are specifically excluded. All heating systems and their appliances are untested.

VIEWING

Strictly by appointment with the selling agent.

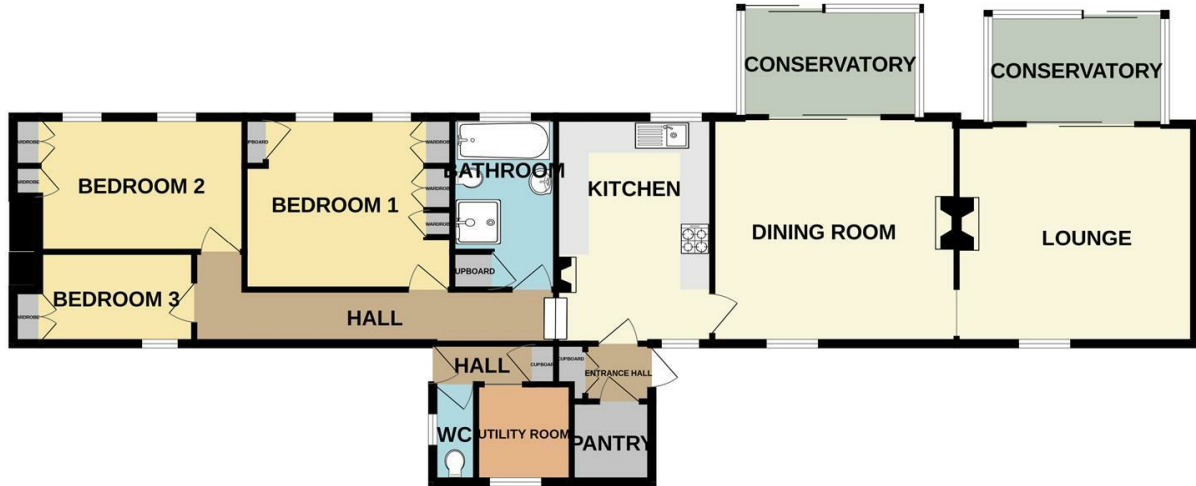








GROUND FLOOR
1364 sq.ft. (126.7 sq.m.) approx.



TOTAL FLOOR AREA: 1364 sq.ft. (126.7 sq.m.) approx.

Whilst every attempt has been made to ensure the accuracy of the floorplan contained here, measurements of doors, windows, rooms and any other items are approximate and no responsibility is taken for any error, omission or mis-statement. This plan is for illustrative purposes only and should be used as such by any prospective purchaser. The services, systems and appliances shown have not been tested and no guarantee as to their operability or efficiency can be given.
Made with Metropix ©2025



Important Information You may download, store and use the material for your own personal use and research. You may not republish, retransmit, redistribute or otherwise make the material available to any party or make the same available on any website, online service or bulletin board of your own or of any other party or make the same available in hard copy or in any other media without the website owner's express prior written consent. The website owner's copyright must remain on all reproductions of material taken from this website.

Berwick Office
36 Hide Hill, Berwick-upon-Tweed
Northumberland, TD15 1AB

T: (01289) 307571
F: (01289) 302948
E: berwick@aitchisons.co

Wooler Office
25 High Street, Wooler
Northumberland, NE71 6BU

T: (01668) 281819
F: (01668) 281717
E: wooler@aitchisons.co



Zoopa.co.uk

