



**5 Parham House, 15 King Georges Drive, Bramshott Place.
Guide Price £350,000 Leasehold.**

5 Parham House,

15 KING GEORGES DRIVE, BRAMSHOTT PLACE, LIPHOOK, GU30 7GB.

Price Guide £300,000 Leasehold

A wonderful opportunity to acquire a light and spacious 1st floor apartment which is situated in the highly desirable and sought after Bramshott Place, which is a retirement village that offers considerable facilities and wonderful grounds and most importantly, there is a real community spirit.

5 Parham House is a light and spacious apartment situated on the 1st floor and is accessed by a lift or staircase. There is a hall which gives access to the Living room which has a small balcony. The kitchen dining room is large with a bay window and is well equipped. The master bedroom suite is spacious with a bay window and an ensuite wet room. Bedroom 2 is currently used as a home office and is beautifully equipped with quality hardwood units (which could be removed easily if required) and there is a 2nd bathroom. Externally there is a garage in a block with light and power. A short walk away is the developments Club House with all the facilities, beyond which is the open parkland and beautiful gardens designed by an award-winning landscape architect. The apartment has 24 hrs emergency call system, and it also has domestic help 1 hr weekly. There is also bed linen laundry all of which is covered by the service charge. There is a small maintenance team who look after the apartment, again covered by the service charge. There is village transport with a vehicle that gives access to supermarkets, town centres and planned excursions.

The Club House offers its own restaurant and bar, there is a swimming pool facility with fully equipped gymnasium. There is a library, a games room and a communal entertainment room. Periodically during the week there is a shop available.

- **Highly desirable sought after retirement village**
- **First floor apartment**
- **Restaurant & swimming pool**
- **Beautiful grounds, open fields & footpaths**
- **Small Balcony in Living room & bay window in Kitchen**
- **Garage with light and power**
- **Wonderful facilities & communal community**
- **Light and spacious accommodation**
- **Hall, Living room, Kitchen/Dining room, 2 bedrooms, 2 bathrooms (1 ensuite)**
- **24hr emergency call system and domestic help**

CG LIPHOOK

2 MIDHURST ROAD, LIPHOOK, HAMPSHIRE, GU30 7ED

T: 01428 728900

E: liphook.sales@clarkegammon.co.uk

clarkegammon.co.uk

Local Authority: East Hants District Council

Services: All Main Service.

Tax Band D









SITUATION

The development is tucked away essentially in its own wonderful grounds, yet is very accessible to the A3 which gives access to London, the M25, and the South coast. Liphook centre is only a short distance away with its' mainline station connecting to Waterloo in just over the hour. The village has excellent facilities, which can be accessed by the Bramshott transport, including Sainsburys supermarket, local cafes, shops, restaurants, and highly desirable public houses. Liphook also boasts The Living Room Cinema. The area as a whole is surrounded by beautiful countryside although Bramshott Place itself is self sufficient with its own countryside, walkways, and facilities. Liphook offers beautiful walks at Iron Hill,

Wheatsheaf Common and Chapel Common.

There are excellent sporting facilities including golf at Old Thorns Golf & Country Club, Liphook Golf Club, Hindhead Golf Club and Hankley Common.




DIRECTIONS

From the centre of Liphook village, leave via the London Road in a northerly direction, after a short distance, look to turn right signposted to Bramshott where the entrance to Bramshott village will be found also on the right. Parham House is beyond the Club House on the left side.

The Lease: This remainder of 125 years from 1st April 2008. The service charge from 1st January 2026 for single occupancy is £9,832 PA and double occupancy is £10,816 PA. Ground rent is between £250.00 and £370.00 PA. There is a lease and service charge on the garage. There are additional costs involved when the property is sold, reverting percentages back to the village.

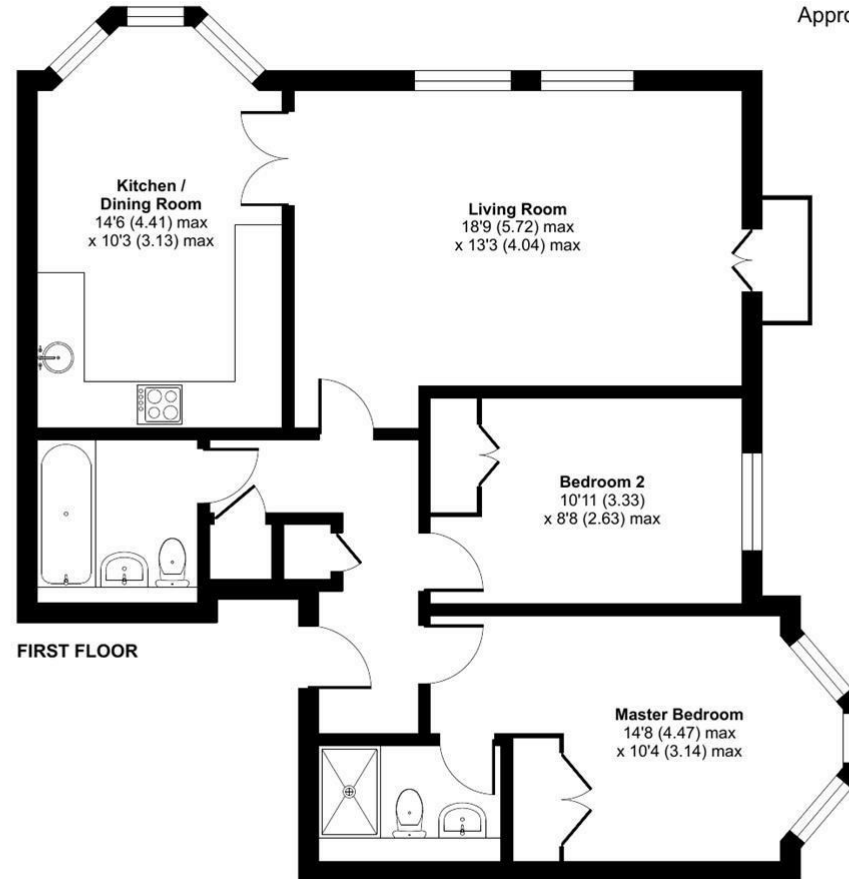
Guildford - 17.2 miles
Liphook mainline station - 1.4 miles
Liphook square - 1 mile
Farnham (via A287) - 12.6 miles
Haslemere - 5.9 miles

Energy Efficiency Rating		Current	Potential
<i>Very energy efficient - lower running costs</i>			
(92 plus) A			
(81-91) B		85	85
(69-80) C			
(55-68) D			
(39-54) E			
(21-38) F			
(1-20) G			
<i>Not energy efficient - higher running costs</i>			
England & Wales		EU Directive 2002/91/EC 	

King George's Drive, Liphook, GU30

Approximate Area = 867 sq ft / 80.5 sq m

For identification only - Not to scale



 Floor plan produced in accordance with RICS Property Measurement 2nd Edition, Incorporating International Property Measurement Standards (IPMS2 Residential). © nichecom 2025. Produced for Clarke Gammon. REF: 1360319

AGENT'S NOTE

Whilst we endeavour to make our sales particulars accurate and reliable, we wish to inform prospective purchasers that we have not carried out a detailed survey, nor tested the services, appliances and specific fittings. If there is any point which you would like to have further clarification upon, please contact this office.

ESTATE AGENTS CHARTERED SURVEYORS VALUERS LETTINGS AUCTIONEERS

GUILDFORD OFFICE
T: 01483 880 900

HASLEMERE OFFICE
T: 01428 664 800

LIPHOOK OFFICE
T: 01428 728 900

MAYFAIR OFFICE
T: 0870 112 7099

AUCTION ROOMS
T: 01483 223101

