



Bruntley Place, Freuchie
Offers over £159,995

Bruntley Place, Freuchie

Charming 2-Bedroom End-Terraced Villa with Driveway in Sought-After Freuchie

Presented by Allan England's award-winning team at First For Homes, this delightful 2-bedroom end-terraced villa is located in the highly desirable village of Freuchie, offering lovely views over Freuchie Bowling Green. The property features a welcoming entrance vestibule with storage space, leading into a hallway and a bright, spacious lounge/diner, perfect for both relaxing and entertaining. The home also offers a well-proportioned kitchen, two generous double bedrooms, and a family bathroom. Externally, the property benefits from a 3 car driveway to the front and side. To the rear, there is a garden room outbuilding and a patio area—ideal for enjoying sunny days in a peaceful setting. Ideally situated within walking distance of local amenities including shops, a nursery, play park, primary school, cricket club, and the Lomond House Hotel, this home combines convenience with a charming village lifestyle. Early viewing is highly recommended to fully appreciate what this property has to offer.

Home Report Value: £165,000

EPC Rating: D

Council Tax Band: B

First For Homes – first for trust, first for service, first for aftercare.

Freuchie is one of the most picturesque villages of Fife combining rustic and historic charm with everyday modern conveniences. There is easy access to local amenities including the Kingdom Shopping Centre in Glenrothes as well as Perth, Dundee and St Andrews, and for the commuter the A92 allows swift access to Edinburgh and a rail network system leading to all parts of Fife and outlying areas





SITUATION - Freuchie

ENTRANCE PORCH

LOUNGE/DINER

19'5" x 10'11" (approx) (5.92m x 3.35m (approx))

KITCHEN 9'8" x 8'3" (approx) (2.96m x 2.54m (approx))

STAIRS TO UPPER LEVEL

BEDROOM 1

14'7" x 10'2" (approx) (4.46m x 3.11m (approx))

BEDROOM 2

11'8" x 9'1" (approx) (3.58m x 2.77m (approx))

BATHROOM

6'3" x 5'8" (approx) (1.93m x 1.73m (approx))

3 CAR DRIVEWAY

SIDE GARDEN GROUNDS

REAR GARDEN ROOM

12'7" x 9'6" (approx) (3.86m x 2.91m (approx))

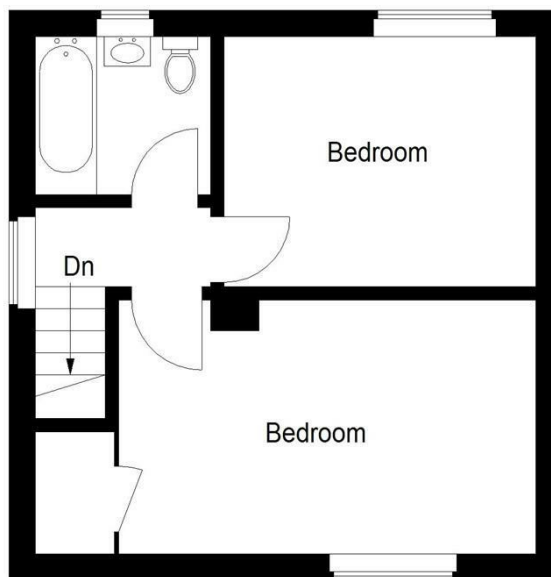
REAR GARDEN GROUNDS

INFORMATION





Ground Floor



First Floor

Illustration for identification purposes only, measurements are approximate, not to scale. floorplansUsketch.com © (ID1292479)

Information

These particulars are prepared on the basis of information provided by our clients. We have not tested the electrical system or any electrical appliances, nor where applicable, any central heating system. All sizes are recorded by electronic tape measurement to give an indicative, approximate size only. Prospective purchasers should make their own enquiries – no warranty is given or implied. This schedule is not intended to, and does not form any contract.

FREE Valuation

Selling Your Home?

Choose first for homes - a highly experienced estate agency team you can trust to sell your home at the highest possible price. Offering fantastic savings on selling fees, with no compromise on service, free professional photography highlighting your home in its best light, first for homes will be your first choice. Contact us today to arrange your appointment.



first for trust



first for service



first for aftercare

first for homes
first for property in life - firstforhomes.co.uk

Contact Allan England's Team
01592 752 944

32 North Street, Glenrothes, Fife KY7 5NA
Fax: 01592 807947
sales@firstforhomes.co.uk
www.firstforhomes.co.uk