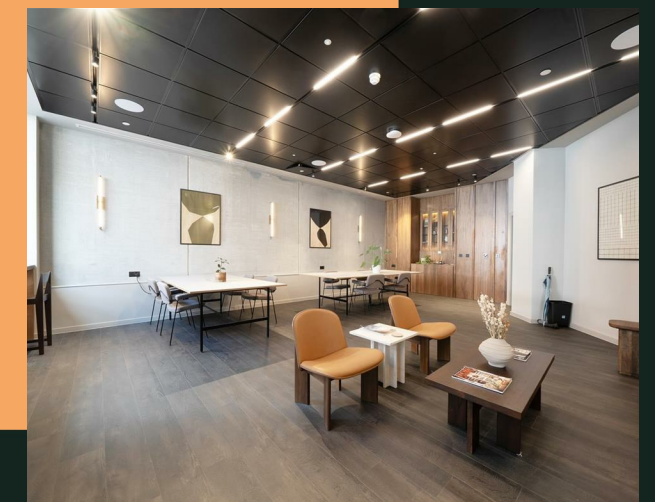


# Ludgate Hill, B3

PROPERTY ADDRESS  
Apartment 401  
50 Ludgate Hill  
Birmingham  
B3 1FG

Energy Efficiency Rating		Current	Potential
<i>Very energy efficient - lower running costs</i>			
(92 plus) <b>A</b>			
(81-91) <b>B</b>		85	85
(69-80) <b>C</b>			
(55-68) <b>D</b>			
(39-54) <b>E</b>			
(21-38) <b>F</b>			
(1-20) <b>G</b>			
<i>Not energy efficient - higher running costs</i>			
<b>England &amp; Wales</b>	EU Directive 2002/91/EC		



Call Us  
01215162222

Email Us  
solihull@vision-properties.co.uk

**vision**

We look at  
estate agency  
differently.

**vision**

- Total cost of first month: £3,446.15 (rent & deposit)
- Brand new
- Immaculately presented
- Co-working lounge
- Wellness studio

Be the first to rent this stunning new build apartment. The property comes fully furnished and benefits from high spec fixtures and fittings throughout that set it apart, including recessed curtain rails, discreet blinds to maximise light, attractive accessories and wall art that add a splash of colour and warmth.

The spacious apartment briefly comprises of a bright and airy open plan living, dining and kitchen area with integrated appliances, two bedrooms (one with an ensuite) and a main bathroom.

Residents have access to the on-site wellness studio, co-working lounge and rooftop garden with fantastic city scape views.

SETL is located in the popular Jewellery Quarter just off St Paul's Square, with easy access to all the shops, bars and restaurants of the city centre. It also benefits from excellent transport links including New Street, Snow Hill and Grand Central stations.

Available immediately subject to acceptable references.

Rent: £1,600 per calendar month  
Holding deposit: £369.23  
Deposit: £1,846.15

Please note that some of the photos have been enhanced using CGIs for illustrative purposes.



Your Text Here

