



34 Hereford Road, Woodthorpe - NG5 4HZ

Guide Price **£325,000**





34 Hereford Road

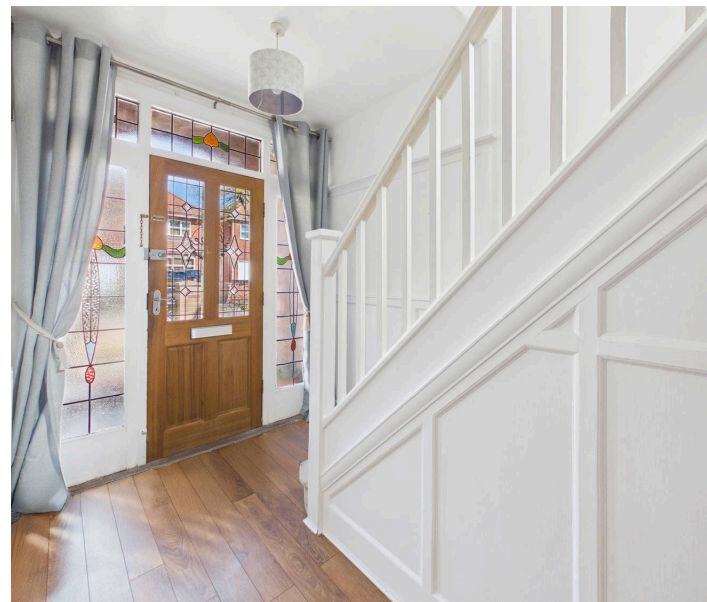
Woodthorpe, Nottingham

VIEWING HIGHLY RECOMMENDED! Well-presented detached family home in the sought after Woodthorpe with 2 reception rooms, three beds and southerly-facing rear garden with ample off-street parking!

Council Tax band: D

Tenure: Freehold

- Well-presented detached home offering bright and spacious accommodation
- Sought after Woodthorpe setting with amenities, bus links and schools close by
- Ideal for families seeking space flexibility and a welcoming atmosphere
- Inviting hallway with decorative glazed door and useful storage cupboard
- Delightful lounge featuring bay window and striking fireplace
- Light filled dining room with patio doors overlooking the rear garden
- Stylish fitted kitchen with a range of integrated appliances
- Three well-proportioned bedrooms (including two doubles bedrooms)
- White two-piece bathroom suite plus a separate WC
- Enclosed southerly-facing rear garden, secure tandem carport and driveway







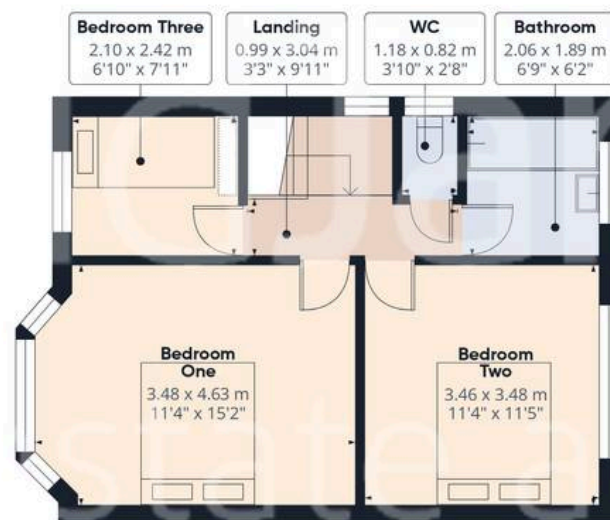


Floor 0

Approximate total area⁽¹⁾

107.4 m²

1156 ft²



Floor 1



(1) Excluding balconies and terraces

Calculations reference the RICS IPMS 3C standard. Measurements are approximate and not to scale. This floor plan is intended for illustration only.

GIRAFFE360



David James Estate Agents

David James Estate Agents, 45B Plains Road – NG3 5JU

0115 962 4213 • mapperley@david-james.com • www.david-james.com

These particulars are produced in good faith and are set out as a general guide only. Measurements are approximate and floor plans are for illustrative purposes only. Services have not been tested. We have established professional relationships with third-party suppliers for the provision of services to Clients, details of which can be found on the property listing page on our website.