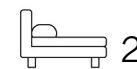




Living  
made  
better

The Oxygen  
Royal Victoria Dock, E16 1BL



Asking Price £500,000

# The Oxygen, Royal Victoria Dock, E16 1BL

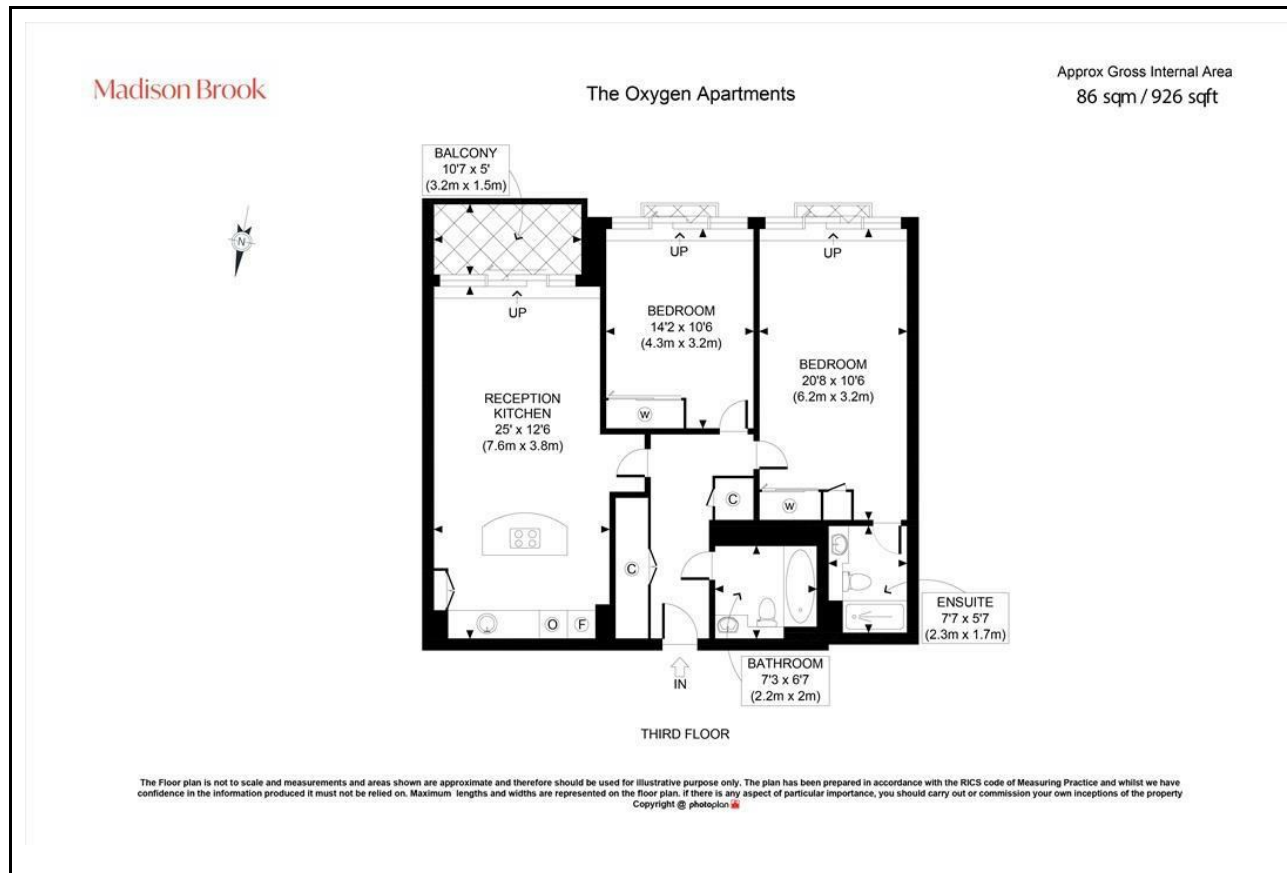
Madison Brook

## Property Summary

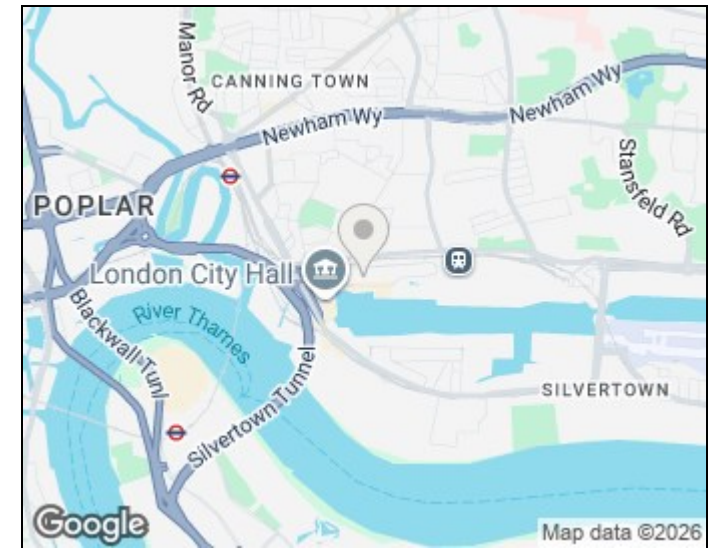
A bright and spacious two-bedroom apartment set on the third floor of the popular Oxygen Apartments, offering 926 sq. ft. of well-designed living space, secure gated parking and a 24-hour concierge. The property features an open-plan living area with integrated kitchen and private balcony enjoying dock and O2 views. Both bedrooms are doubles, with an en-suite to the principal, plus a separate modern bathroom. Ideally located close to Thames Barrier Park, Royal Victoria DLR and the Elizabeth Line, providing excellent access to Canary Wharf and the City.

Remaining Lease: 169 years | Ground Rent: £800 | Service Charge: £5,600

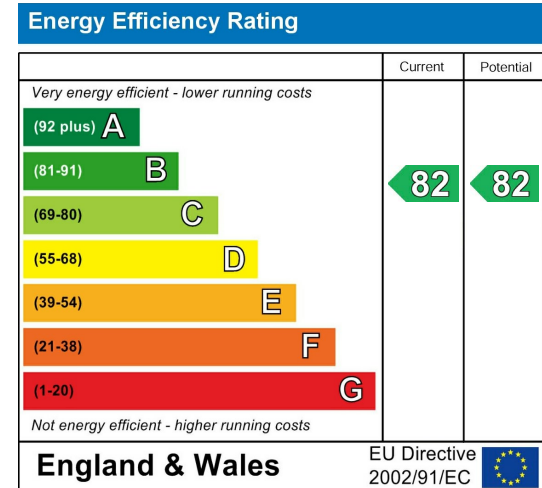
## Floorplan



## Area Map



## Energy Efficiency Graph



These particulars, whilst believed to be accurate are set out as a general outline only for guidance and do not constitute any part of an offer or contract. Intending purchasers should not rely on them as statements of representation of fact, but must satisfy themselves by inspection or otherwise as to their accuracy. No person in this firm's employment has the authority to make or give any representation or warranty in respect of the property.

Unit B 20 Western Gateway, Royal Victoria  
Dock, London, E16 1BS  
Tel: 020 3946 6000 Email:  
docklands@madisonbrook.com  
<https://madisonbrook.com/>