



59 Handfield Road

Liverpool, L22 0NU

Offers over £415,000

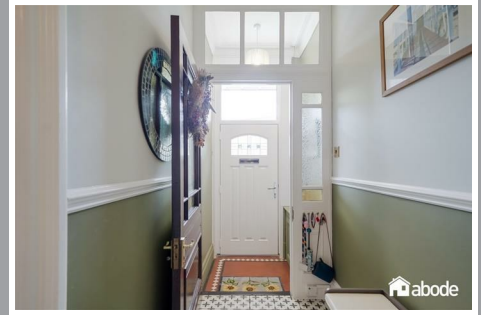
 5  2  2  D



59 Handfield Road

Liverpool, L22 0NU

Offers over £415,000



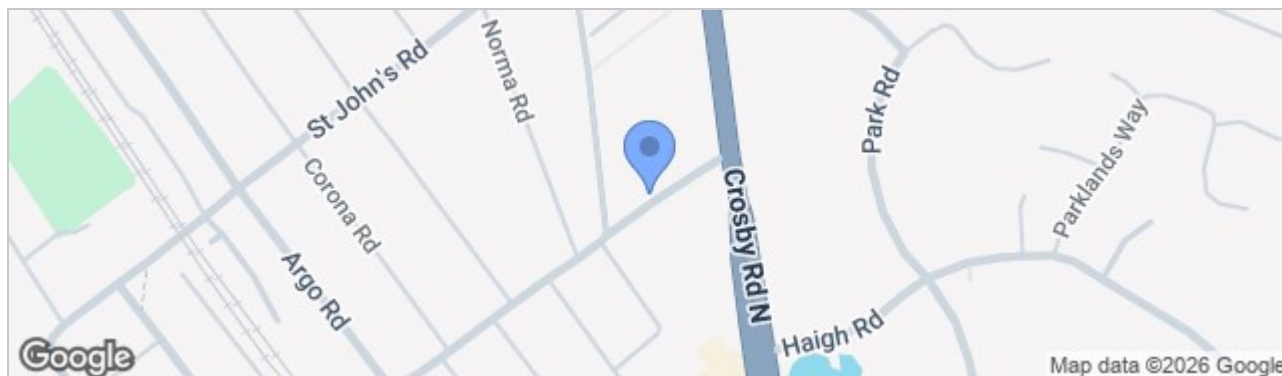
TOTAL: 200 m2

Ground floor: 79 m2, 1st floor: 65 m2, 2nd floor: 56 m2
EXCLUDED AREAS: OPEN TO BELOW: 1 m2, WALLS: 19 m2

FLOOR PLAN CREATED BY CUBICASA APP. MEASUREMENTS DEEMED HIGHLY RELIABLE BUT NOT GUARANTEED.



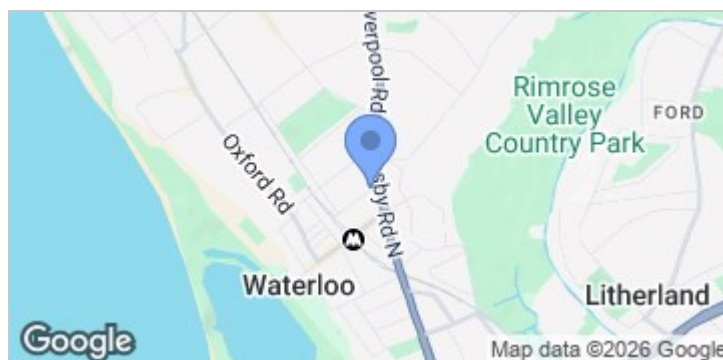
Road Map



Hybrid Map



Terrain Map



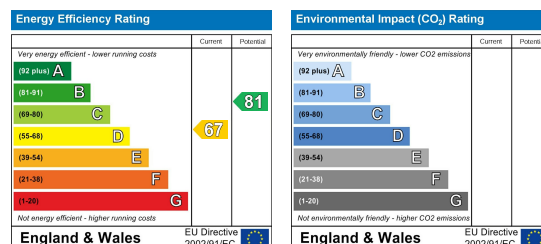
- **STUNNING FIVE-BEDROOM MID-TERRACE HOME SET ACROSS THREE SPACIOUS FLOORS**
- **TWO GENEROUS RECEPTION ROOMS IDEAL FOR ENTERTAINING AND FAMILY LIVING**
- **IMMACULATE MODERN KITCHEN WITH SEPARATE LAUNDRY ROOM AND GROUND FLOOR WC**
- **SPACIOUS MASTER BEDROOM ALONGSIDE TWO FAMILY BATHROOMS FOR ADDED CONVENIENCE**
- **BEAUTIFULLY MAINTAINED GARDEN PERFECT FOR OUTDOOR RELAXATION AND SUMMER GATHERINGS**
- **BLENDS CLASSIC CHARM WITH MODERN LIVING, OFFERING AN IDEAL FAMILY HOME IN A SOUGHT-AFTER LOCATION**
- **[HTTPS://WWW.RIGHTMOVE.CO.UK/STAMP-DUTY-CALCULATOR](https://www.rightmove.co.uk/stamp-duty-calculator)**

Viewing

Please contact our Crosby Office on 01519093003 if you wish to arrange a viewing appointment for this property or require further information.

These particulars, whilst believed to be accurate are set out as a general outline only for guidance and do not constitute any part of an offer or contract. Intending purchasers should not rely on them as statements of representation of fact, but must satisfy themselves by inspection or otherwise as to their accuracy. No person in this firm's employment has the authority to make or give any representation or warranty in respect of the property.

Energy Efficiency Graph



82 Coronation Road, Crosby, Liverpool L23 5RH

6 Allerton Road, Mossley Hill, Liverpool, L18 1LN

2 Chapel Lane, Formby, Liverpool, L37 4DU

Tel: 0151 909 3003

Email: crosby@abode-group.co.uk

Web: www.abode-group.co.uk

Tel: 0151 601 3003

Email: allerton@abode-group.co.uk

Web: www.abode-group.co.uk

Tel: 01704 827 402

Email: formby@abode-group.co.uk

Web: www.abode-group.co.uk