



# St Thomas's Wharf

78 Wapping High Street, E1W

£4,000 per month  
(£923.08 per week)

SHORT LET\* A charming two-bedroom apartment arranged over the top two floors of this stunning conversion in the heart of Wapping. The property is offered in excellent decorative order and comprises of two double bedrooms and two bathrooms

**CHESTERTONS**



# St Thomas's Wharf

78 Wapping High Street, E1W

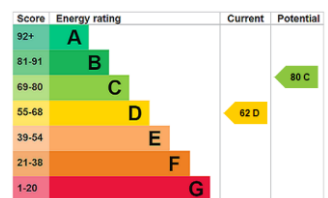
- Charming conversion
- Original features
- Three roof terraces
- River views
- Wood floors



A charming two-bedroom apartment arranged over the top two floors of this stunning conversion in the heart of Wapping. The property is offered in excellent decorative order and comprises of two double bedrooms, two bathrooms (one en-suite shower room) and a beautiful open plan kitchen and reception room. The apartment boasts original features such as double height vaulted ceilings, wood floors throughout and three roof terraces, one with river views.

Wapping is a unique area steeped in history and character situated along the north side of the River Thames. Although The City is within walking distance, the area is also well connected via Wapping, Tower Hill & Tower Gateway stations. The area is home to St Katharine Docks which is central London's only marina, boasting an array of bars and restaurants.

**Minimum Term:** 2 months  
**Deposit Required:** £4,615.38  
**Local Authority:** Tower Hamlets  
**Council Tax Band:** E  
**EPC Rating:** D  
**Furnished**



### *Chestertons Tower Bridge Lettings*


220 Tower Bridge Road  
 Tower Bridge  
 London  
 SE1 2UP  
 towerbridgelettingsusers@chestertons.co.uk  
 02073576911  
 chestertons.co.uk

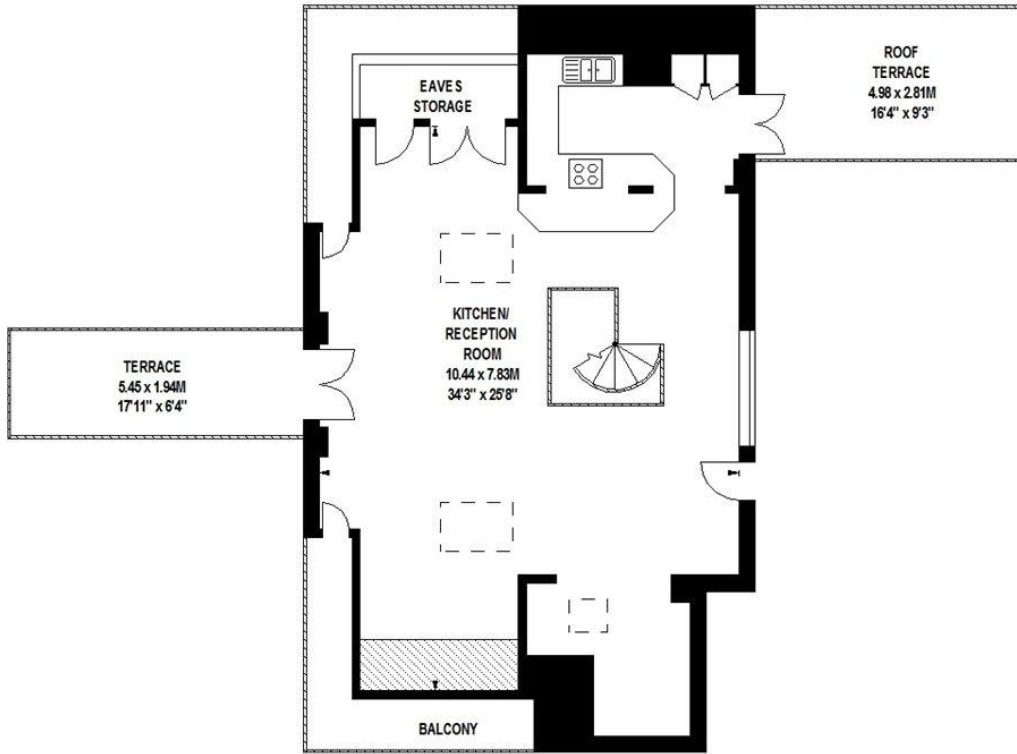
Additional tenant charges apply (fees apply to non-AST tenancies only)  
 Tenancy Agreement Fee: £300  
 References per Tenant/Guarantor: £60  
 Inventory check (approx. £100 – £250 inc. VAT)  
[chestertons.co.uk/property-to-rent/applicable-fees](http://chestertons.co.uk/property-to-rent/applicable-fees)

# St Thomas Wharf, E1

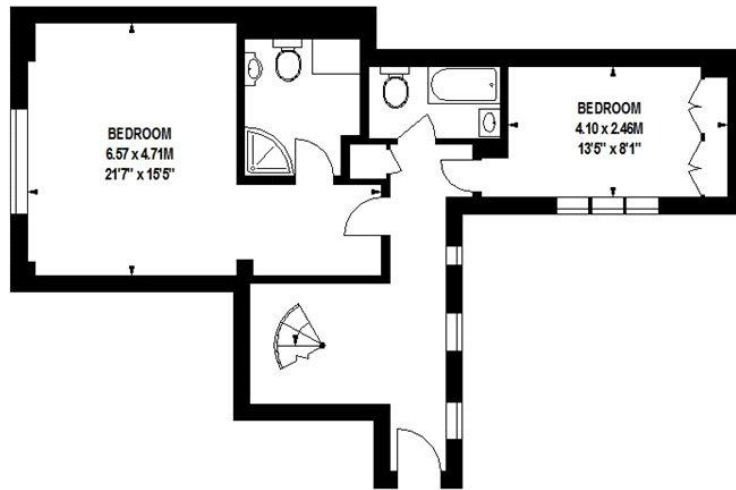
Approximate Gross Internal Area 143 sq m / 1539 sq ft  
Including Eaves Storage of 3 sq m / 32 sq ft



 Under 1.5m head height



**Fourth Floor**



**Third Floor**

Floor Plan produced for Chestertons by Mays Floorplans © . Tel 020 3397 4594  
Illustration for identification purposes only, not to scale  
All measurements are maximum, and include wardrobes and window bays where applicable

