



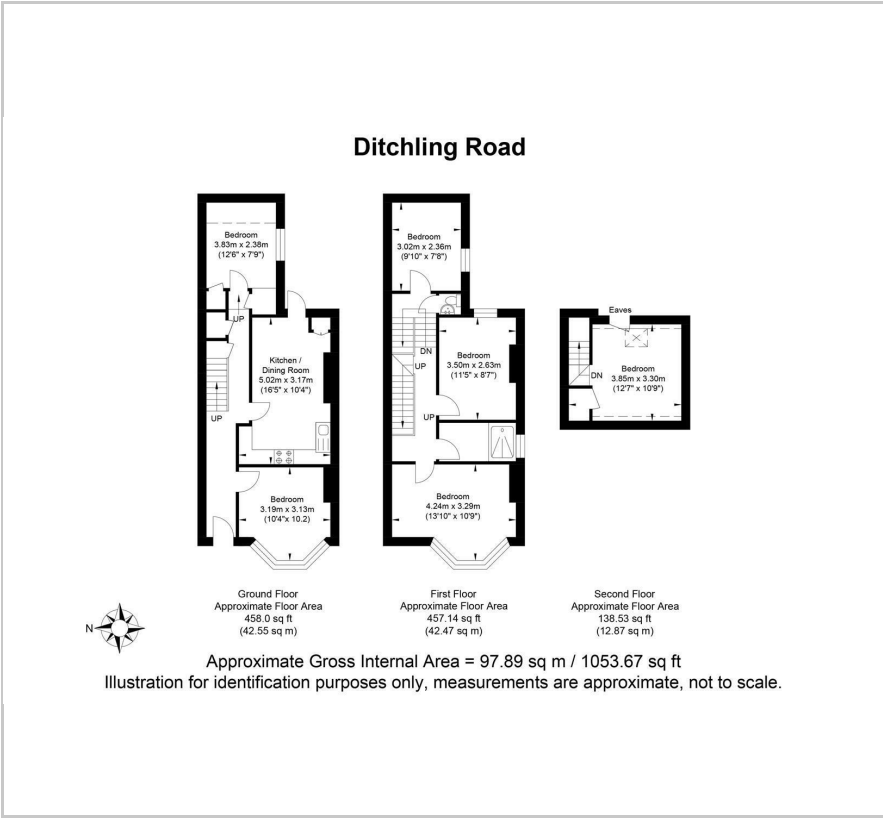
116 Ditchling Road

Brighton, BN1 4SG

£575 Per Month



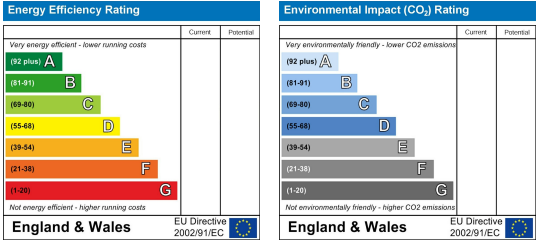
Floor Plan



Area Map



Energy Efficiency Graph



Viewing

Please contact our Pavilion Properties Office on 01273 686 306 if you wish to arrange a viewing appointment for this property or require further information.



INDIVIDUAL DOUBLE ROOM IN HOUSE SHARE | ALL BILLS INCLUDED | CLOSE TO LONDON ROAD STATION |

Welcome to this charming double room located at Ditchling Road, nestled in a vibrant area that offers both convenience and comfort. This property is part of a shared house, making it an ideal choice for those seeking a friendly and communal living environment.

The room itself is spacious and well-lit, providing a perfect retreat after a long day. The shared facilities include a newly installed bathroom, ensuring modern amenities are at your fingertips. The large kitchen and dining area are perfect for socialising and enjoying meals with housemates, while the separate communal attic room offers additional space for relaxation or study.

Situated close to The Level, a popular park, you will find plenty of green space for leisurely walks or outdoor activities. Additionally, the property is conveniently located near London Road train station, making commuting to the city a breeze.

This double room presents an excellent opportunity for individuals looking to live in a lively area with easy access to local amenities and transport links. Whether you are a student or a professional, this property is sure to meet your needs. Don't miss the chance to make this delightful room your new home.



These particulars, whilst believed to be accurate are set out as a general outline only for guidance and do not constitute any part of an offer or contract. Intending purchasers should not rely on them as statements of representation of fact, but must satisfy themselves by inspection or otherwise as to their accuracy. No person in this firm's employment has the authority to make or give any representation or warranty in respect of the property.