



Home Close, Kibworth Beauchamp

£175,000 Leasehold

Spacious three-bedroom duplex in the heart of Kibworth Beauchamp, offering two reception rooms, modern interiors, and far-reaching rear views. Ideal for first-time buyers, investors, or families.

Council Tax band: B

Tenure: Leasehold

EPC Energy Efficiency Rating: D



0116 271 3333





Entrance Hall

Entrance with stairs to the first floor; stairs to the second floor; two storage cupboards; tiled flooring and radiator.

Cloakroom/WC

4' 11" x 3' 11" (1.50m x 1.20m)

With a double-glazed window to the front elevation, a low-level WC, and a wash hand basin.

Sitting Room

14' 1" x 10' 10" (4.30m x 3.30m)

With a double-glazed window to the rear elevation, decorative fireplace, and radiator.

Dining Room

11' 10" x 10' 10" (3.60m x 3.30m)

With a double-glazed window to the rear elevation, a storage cupboard, and a radiator.



Kitchen

10' 10" x 7' 3" (3.30m x 2.20m)

with a double-glazed window to the front elevation; stainless steel sink and drainer unit; range of wall and base units with work surfaces over; built-in oven and gas hob with stainless steel chimney hood over; plumbing for dishwasher and washing machine; space for fridge freezer; vinyl flooring.

First Floor Landing

Loft access leading to a partly boarded loft.

Bedroom One

12' 2" x 10' 10" (3.70m x 3.30m)

With a double-glazed window to the rear elevation, two built-in wardrobes, housing the boiler and radiator.

Bedroom Two

11' 2" x 10' 10" (3.40m x 3.30m)

With a double-glazed window to the rear elevation, a built-in cupboard and a radiator.

Bedroom Three

10' 10" x 10' 0" (3.30m x 3.04m)

With a double-glazed window to the front elevation and a radiator.

Bathroom

6' 7" x 6' 3" (2.00m x 1.90m)

With a double-glazed window to the front elevation, bath with mixer tap and shower attachment, pedestal wash hand basin, low-level WC, tiled walls, and heated chrome towel rail.

Front Garden

Communal front garden.

Rear Garden

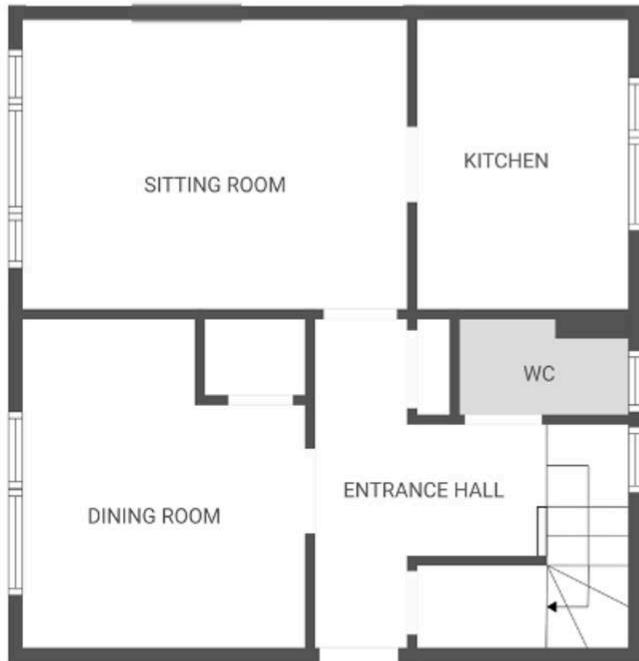
Communal rear garden; mainly laid to lawn; includes a clothes drying area.

Lease Information:

103 years remaining

Service Charge £76.53 per month

Ground Rent £10 per year



Ground floor



1st floor

FLOOR PLAN CREATED BY CUBICASA APP. MEASUREMENTS DEEMED HIGHLY RELIABLE BUT NOT GUARANTEED.

We'll keep you moving...



We must inform all prospective purchasers that the measurements are taken by an electronic tape and are provided as a guide only and they should not be used as accurate measurements. We have not tested any mains services, gas or electric appliances, or fixtures and fittings mentioned in these details, therefore, prospective purchasers should satisfy themselves before committing to purchase. Intending purchasers must satisfy themselves by inspection or otherwise to the correctness of the statements contained in these particulars. Knightsbridge Estate Agents & valuers (nor any person in their employment) has any authority to make any representation or warranty in relation to the property. The floor plans are not to scale, and are intended for use as a guide to the layout of the property only. They should not be used for any other purpose. Similarly, the plans are not designed to represent the actual décor found at the property in respect of flooring, wall coverings or fixtures and fittings.