



## Harefield, KT10

£4,250 Per calendar month

A four bedroom detached family home, finished to a fantastic standard throughout including a driveway, separate outhouse, family bathroom and two reception rooms.

Harefield is a peaceful road with fantastic transport links, including easy access to the A3 and is walking distance to Hinchley Wood Station.

### Features

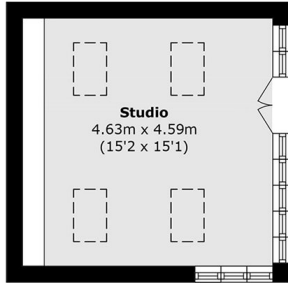
- Great Location
- Modernised Throughout
- Four Bedrooms
- Two Reception Rooms
- Off Street Parking
- Separate Outhouse



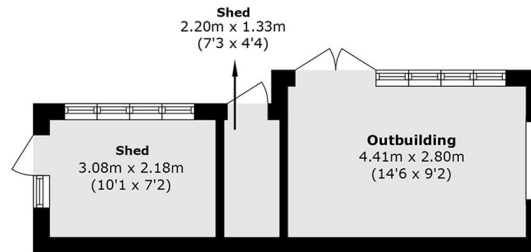
Harefield, KT10



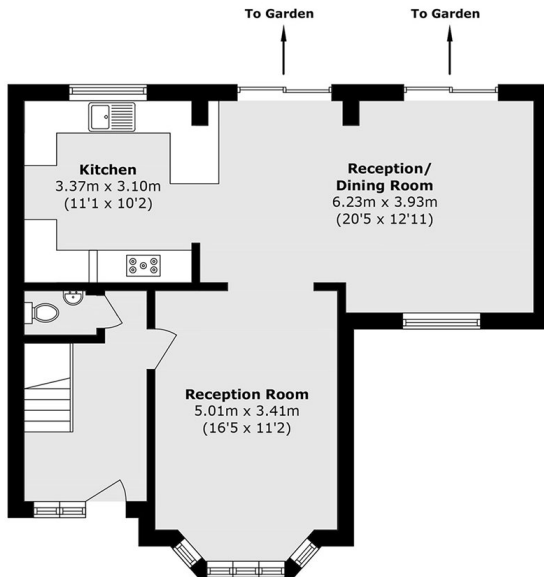
# Harefield, Esher, KT10



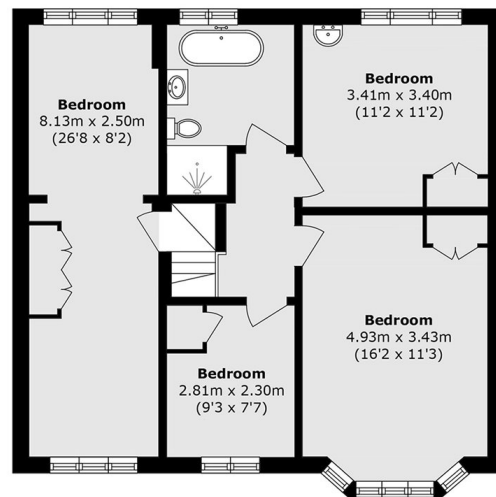
**Ground Floor**



**Ground Floor**



**Ground Floor**



**First Floor**

Total area (approx.): 129.0 sq. m (1388.5 sq. ft)

Outbuilding/Shed/Studio area (approx.): 43.2 sq. m (465.0 sq. ft)