



FOR SALE

Prince of Wales Road, NW5

PRICE £450,000.00



1 Bedroom



Kitchen



1 Reception



1 Bathroom



Yes



Parking Permit

Prince of Wales Road, NW5

PRICE £450,000.00

A bright and airy raised ground-floor end-of-terrace Victorian property, boasting circa 440 sq ft of internal accommodation with a shared garden.

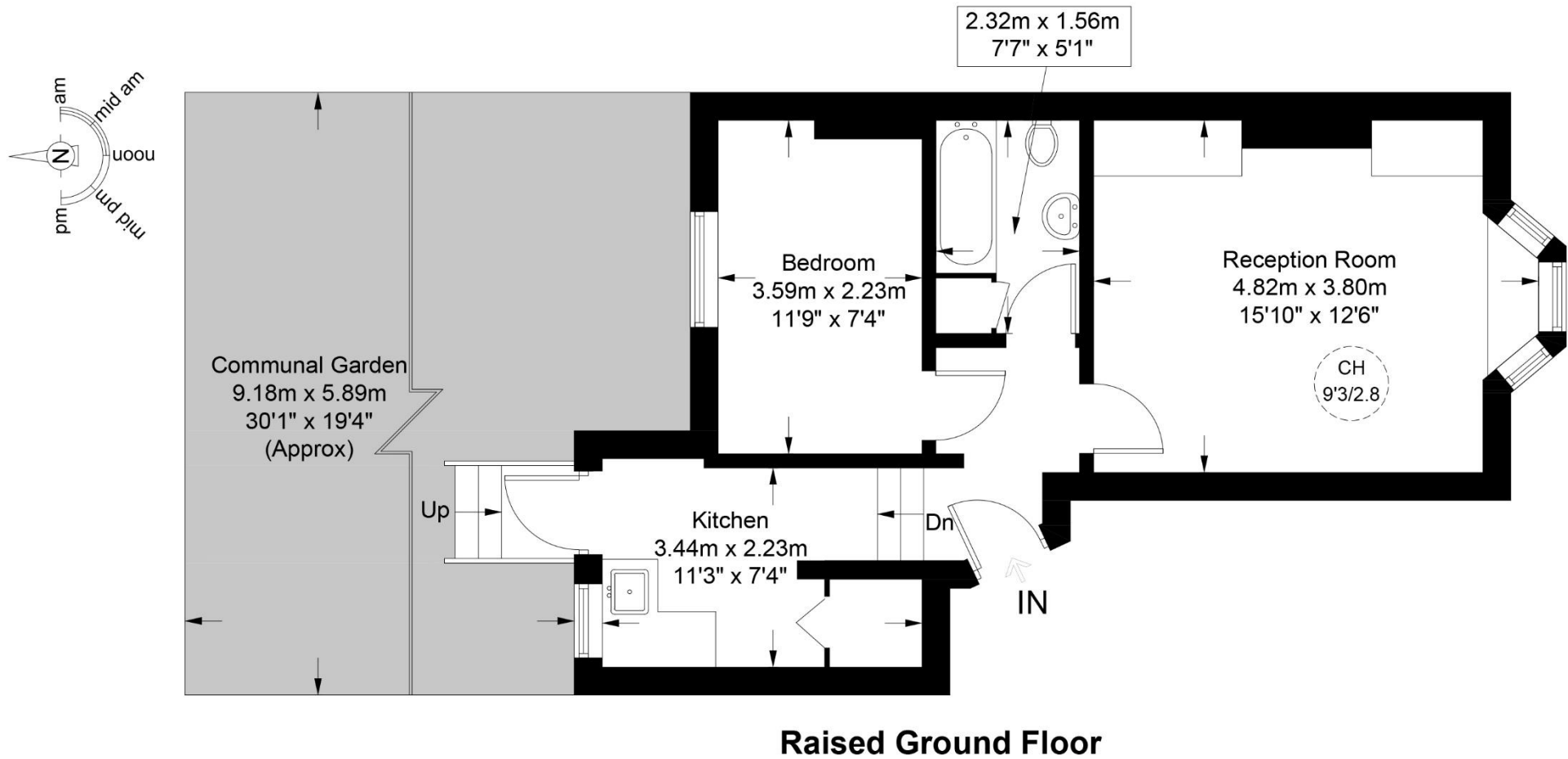
The property features a spacious reception room with period sash windows, a separate kitchen with a bedroom to the rear of the property and a family bathroom.

The property also benefits from direct access to a low-maintenance, paved garden.

Prince of Wales Road runs East from Kentish Town Road and West to Haverstock Hill, taking in Camden and Chalk Farm along its route, offering boundless access to the Northwest London transport network, including Northern Line & overground rail services, connecting local to international routes at Kings Cross St. Pancras.

You can enjoy the green open spaces of Rochester Terrace Garden or Talacre Park, which are nearby or Regents Park, Primrose Hill, and Hampstead Heath within the greater area. Further afield, the Regents Canal towpath provides a leisurely walk to Kings Cross Granary Square with a multitude of amenities and Little Venice.







450,000.00



1 Bedroom



Leasehold



1 Bathroom



London Borough of Camden



1 Reception



Council Tax Band



Yes



EPC Band



Parking Permit



KENTISH TOWN | 189 Kentish Town Rd | London | NW5 2JU | T: 020 7284 1222 | hello@oliverstown.com

ASSOCIATED MAYFAIR | 121 Park Lane | London | W1K 7AG | T: 020 3368 8602 | hello@oliverstown.com