



Living
made
better

Capital East Apartments
Royal Victoria Dock, E16 1AS



£1,750 PCM

Capital East Apartments, Royal Victoria Dock, E16 1AS

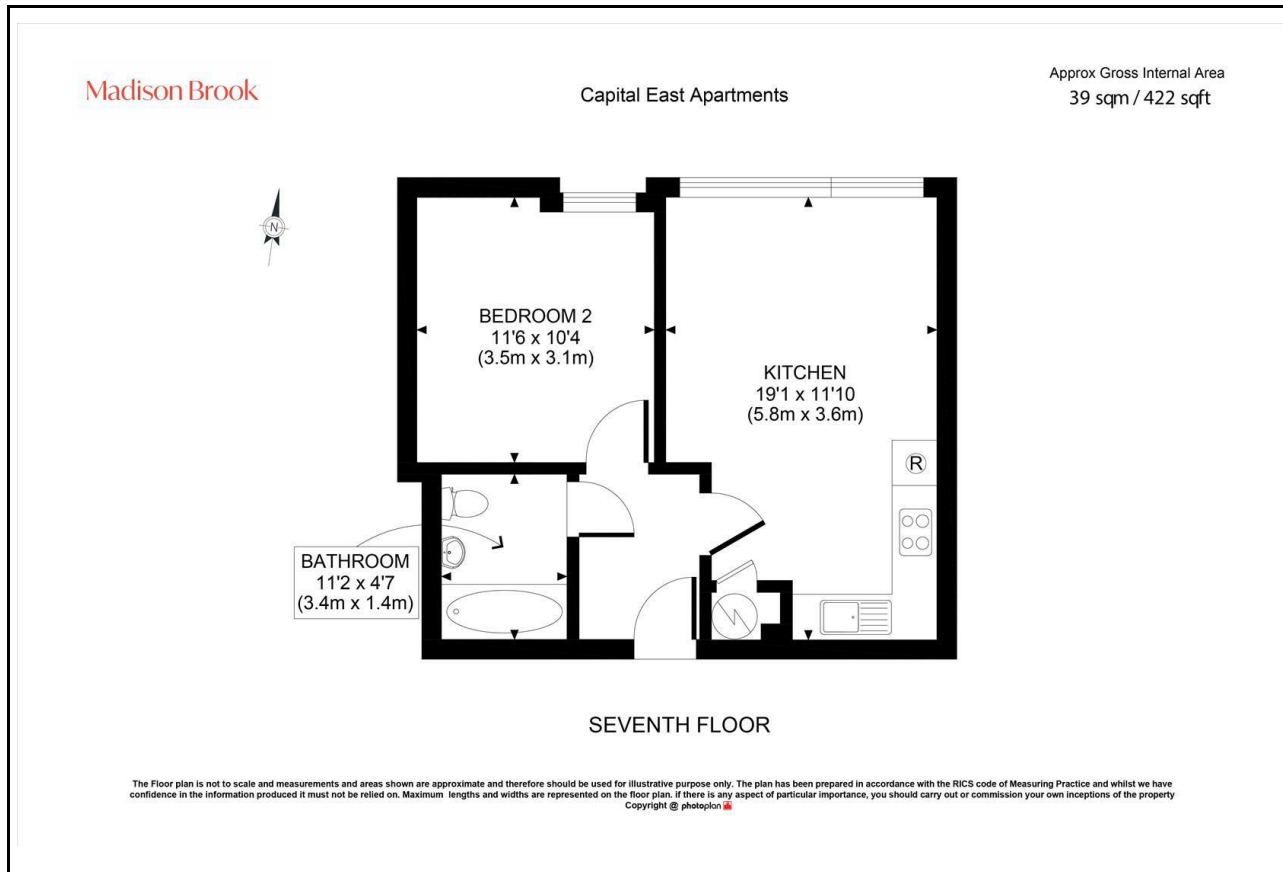
Madison Brook

Property Summary

Set on the 7th floor of Capital East Apartments in Royal Victoria Dock, this bright and modern one-bedroom apartment offers 422 sq. ft. of well-planned living space. The open-plan kitchen/reception benefits from floor-to-ceiling windows and integrated appliances, while the double bedroom is generously sized and the bathroom is neatly finished. Residents enjoy access to a 24-hour concierge and on-site gym, and dockside amenities just moments away.

Transport links include Royal Victoria and Custom House DLR, the Elizabeth Line, Emirates Cable Cars, and easy access to Canary Wharf, North Greenwich, and the City.

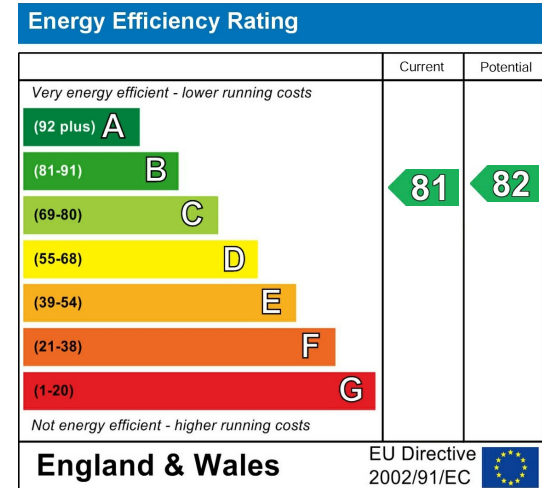
Floorplan



Area Map



Energy Efficiency Graph



These particulars, whilst believed to be accurate are set out as a general outline only for guidance and do not constitute any part of an offer or contract. Intending purchasers should not rely on them as statements of representation of fact, but must satisfy themselves by inspection or otherwise as to their accuracy. No person in this firm's employment has the authority to make or give any representation or warranty in respect of the property.

Unit B 20 Western Gateway, Royal Victoria
Dock, London, E16 1BS
Tel: 020 3946 6000 Email:
docklands@madisonbrook.com
<https://madisonbrook.com/>