

A two-story brick house with a dark brown tiled roof and a chimney. The house features a prominent bay window on the ground floor with white frames and a small porch over the blue front door. To the left is a wooden garage. The driveway is paved with red bricks. The house is surrounded by greenery, including trees and bushes. A large, semi-transparent watermark is visible on the left side of the image.

**Rowe  
& Co.**

**6 Velmore Road, Chandler's Ford**

Eastleigh

**£650,000**

**Rowe  
& Co.**



## 6 Velmore Road

Chandler's Ford, Eastleigh

This attractive three-bedroom property is offered for sale with no forward chain and presents excellent potential for future owners to improve and extend (subject to the necessary planning permissions). Situated on a highly desirable road, the property occupies a generous south-facing plot and is currently used as an HMO.

The accommodation comprises three large double bedrooms, each with its own en-suite, along with a spacious kitchen/dining room. Externally, the property benefits from a large block-paved driveway, a garage, and a private, secluded rear garden.

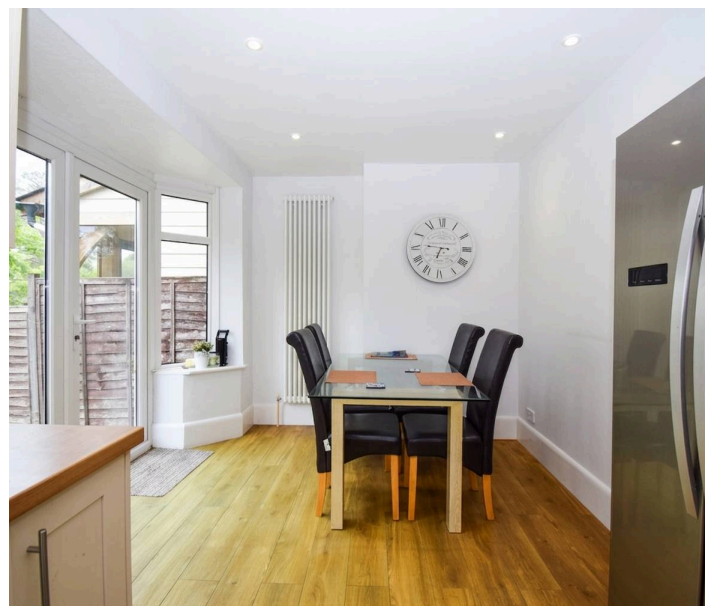
### LOCATION

The property occupies a popular position within the highly desirable Hampshire town of Chandler's Ford, a thriving and well-connected community offering a selection of shops, restaurants and traditional public houses. Communications are excellent, with convenient access to the M3 and M27 motorways.

Mainline rail services are readily available, with London Waterloo approximately 57 minutes from Winchester and around 65 minutes from Southampton Airport Parkway, making the location particularly attractive for commuters.

Council Tax band: D - Tenure: Freehold

EPC Energy Efficiency Rating: C



## 6 Velmore Road

Chandler's Ford, Eastleigh

Upon entering the property, you are welcomed into a spacious entrance hall featuring stairs leading to the first floor, doors providing access to all ground floor rooms, and two useful storage cupboards. A door to one side opens into a generously sized bedroom with a bay-fronted window and en-suite facilities. Historically, this room would have been used as the main lounge, with the en-suite serving as a ground floor cloakroom. From the hallway, a further door leads into the kitchen/dining room, which benefits from windows and French doors opening onto the rear garden. The kitchen is fitted with a range of wall and base units, incorporating cupboards and drawers with complementary worktops. On the first floor, there are two large double bedrooms, each with en-suite facilities. These rooms could easily be reconfigured to suit more typical residential use.

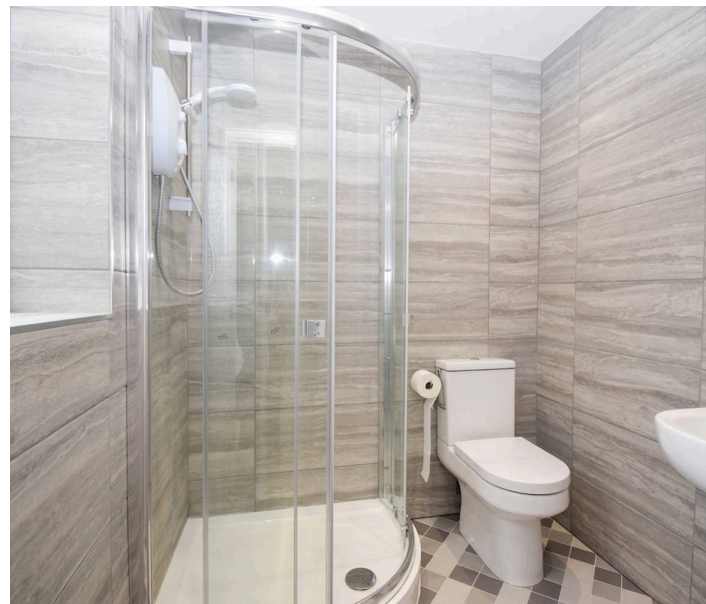
To the front of the property is a large block-paved driveway, providing ample parking for multiple vehicles. There is gated pedestrian access to the side, along with access to the garage.

The southerly-facing rear garden is well established, featuring mature trees and shrubbery that offer a high degree of privacy and seclusion. It is predominantly laid to lawn and benefits from an external storage cupboard and a separate W/C.

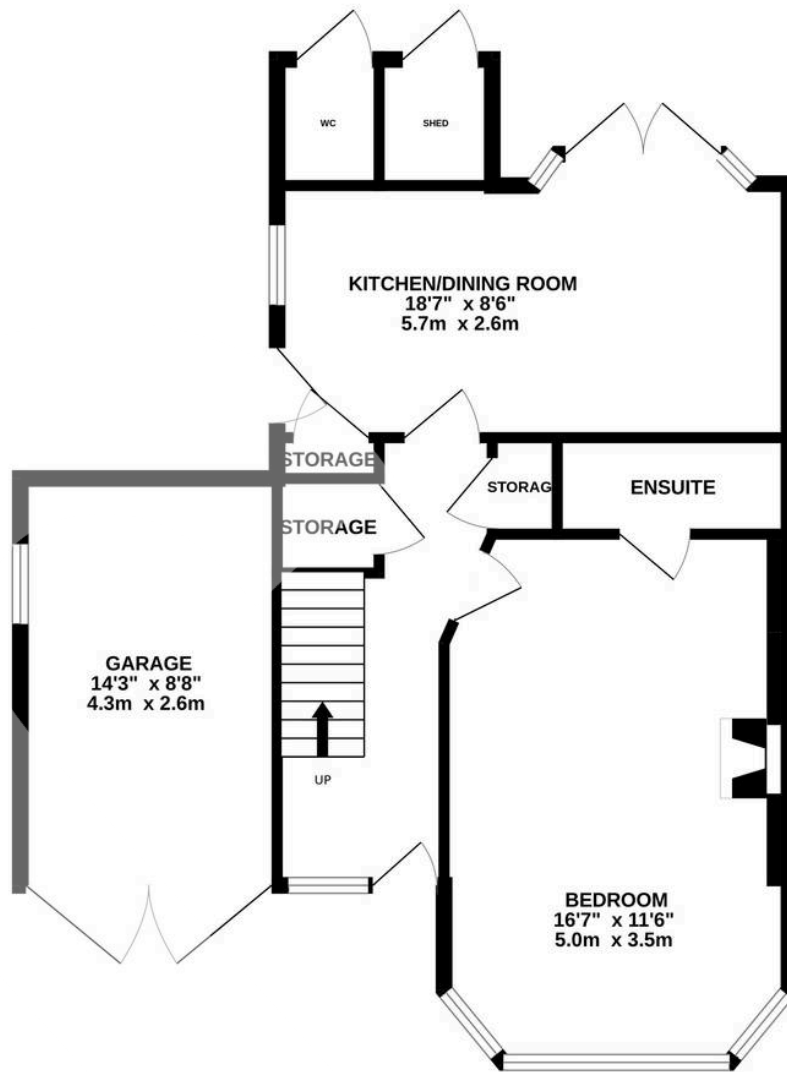
- No Forward Chain
- Large Plot
- Potential To Extend (Subject To Planning)
- Garage & Driveway
- Three Bathrooms
- Kitchen / Dining Room



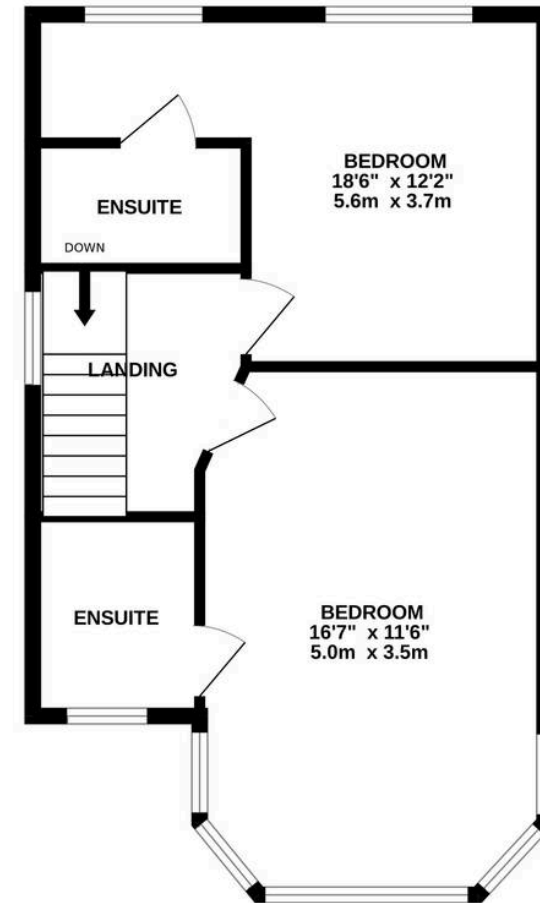
Rowe  
& Co.




GROUND FLOOR



1ST FLOOR



 1 Rufus Court, 103 Winchester Road  
Chandlers Ford,  
SO53 2GG

 02381 102221

 [chandlersford@rowehomes.co.uk](mailto:chandlersford@rowehomes.co.uk)

Whilst every attempt has been made to ensure the accuracy of the floorplan contained here, measurements of doors, windows, rooms and any other items are approximate and no responsibility is taken for any error, omission or mis-statement. This plan is for illustrative purposes only and should be used as such by any prospective purchaser. The services, systems and appliances shown have not been tested and no guarantee as to their operability or efficiency can be given.  
Made with Metropix ©2026