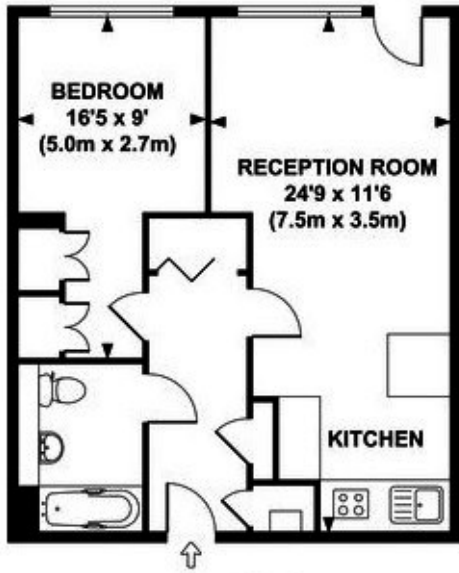


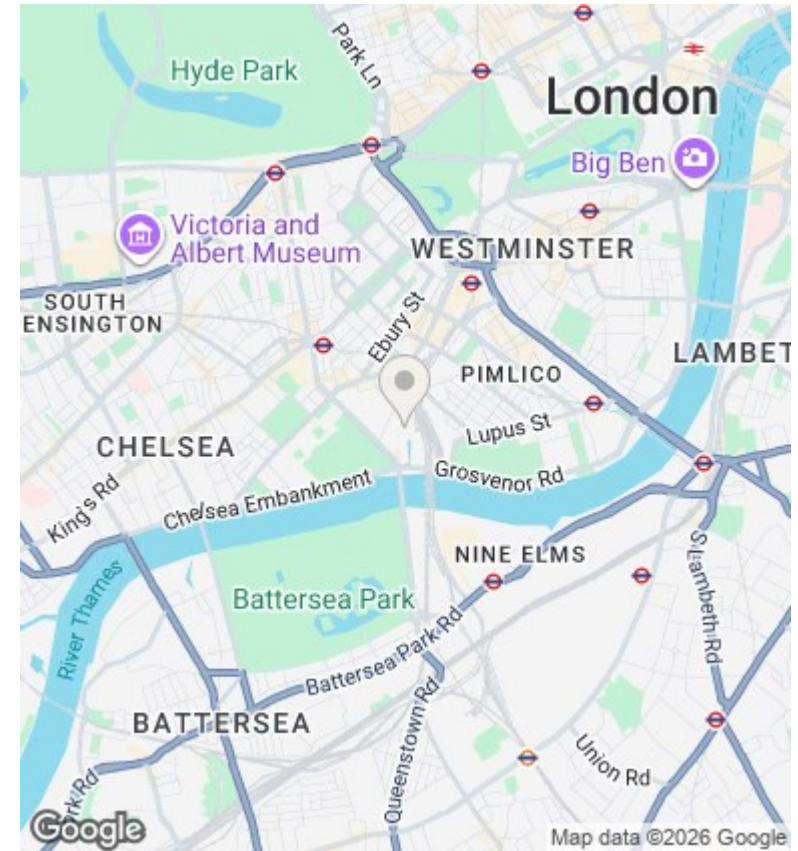
Caro Point, Grosvenor Waterside SW1W 8BD

£2,500 Per Month

- video viewing available
- under floor heating
- minutes away from Sloane Square and Victoria
- 24 hour concierge
- on site Sainsbury's
- minutes away from Battersea Park
- gym and spa
- on site restaurant



APPROX. GROSS INTERNAL FLOOR AREA 511 SQ FT / 48 SQ M



Viewings

Viewings by arrangement only.
Call 02077225022 to make an appointment.

Council Tax Band

D

EPC Rating:

B

Energy Efficiency Rating		Current	Potential
<i>Very energy efficient - lower running costs</i>			
(92 plus) A			
(81-91) B		83	85
(69-80) C			
(55-68) D			
(39-54) E			
(21-38) F			
(1-20) G			
<i>Not energy efficient - higher running costs</i>			
England & Wales		EU Directive 2002/91/EC	