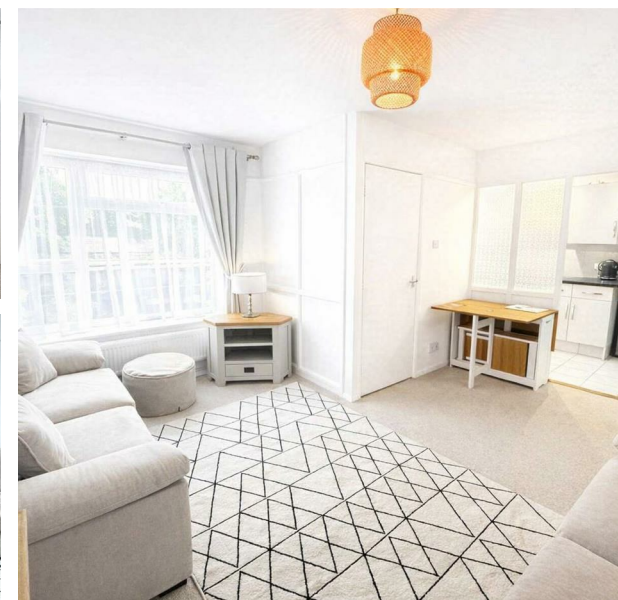


22a Knights Close, Eaton Bray, Dunstable, Bedfordshire, LU6  
2DS  
£1,250 PCM

**ROBINSONS**



AVAILABLE AT THE BEGINNING OF JUNE – AN IMMACULATE, BRIGHT AND AIRY TWO BEDROOM FIRST FLOOR FLAT IN KNIGHTS CLOSE, EATON BRAY, OFFERED FULLY FURNISHED AND READY TO MOVE STRAIGHT INTO.

This beautifully presented first-floor flat is tucked away in a quiet cul-de-sac in the highly sought-after village of Eaton Bray. Offering generous, light-filled living spaces, the property has been tastefully furnished to a high standard throughout.

The spacious lounge features a new sofa and a stylish electric feature fire, creating a cosy and inviting space ideal for relaxing or entertaining. The master bedroom includes a new mattress, wardrobe, bedside tables, and a wall-mounted vanity mirror with built-in lighting, complemented by a matching dressing table.

The modern fitted kitchen provides plenty of storage and workspace, while both bedrooms are well-proportioned and in excellent condition, offering ample storage for everyday living.

Externally, the property offers off-street parking, a balcony, and a peaceful cul-de-sac setting. It is ideally located for local amenities and within the catchment of the highly regarded Eaton Bray Academy and All Saints Academy (Secondary) schools, with excellent transport links nearby.



20 West Street  
Dunstable  
Bedfordshire  
LU6 1SX  
01582 661112  
sales@robinsons-estates.co.uk  
<https://www.robinsons-estates.co.uk>

