



Cornwall Crescent
London, W11





Set within an attractive period building on the highly sought after Cornwall Crescent, W11, this spacious three bedroom, two bathroom top floor maisonette occupies the first and second floors and offers an excellent opportunity to create a wonderful Notting Hill home. The property is defined by its impressive ceiling heights, generous proportions and an abundance of natural light throughout. The first floor is arranged around a large open-plan reception room, ideal for both entertaining and everyday living, with a separate kitchen area positioned to the rear, open to the main space yet clearly defined.

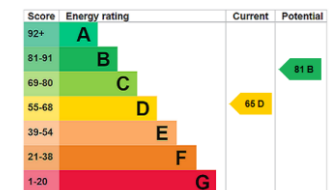
Upstairs, the accommodation provides three bedrooms and two bathrooms, making the layout ideal for families, professionals or investors alike.

Cornwall Crescent is a quiet, tree lined address moments from the vibrant amenities of Portobello Road, Westbourne Grove and Golborne Road, with excellent transport links nearby including Ladbroke Grove and Westbourne Park underground stations. The open green spaces of Holland Park are also within easy reach.

A rare opportunity to acquire an upper floor period flat in one of Notting Hill's most desirable locations, offering space, character and future potential.

- Three-bedroom, two-bathroom top floor maisonette
- Arranged over the first and second floors of a period building
- Impressive ceiling heights and excellent natural light
- Large open reception room with a defined kitchen area
- Prime Notting Hill location close to Portobello Road and transport links

Asking Price £1,300,000



Tenure: Share of Freehold

Service Charge: TBC

Ground Rent: £0

Local Authority: Royal Borough Of Kensington & Chelsea

Council Tax Band: F

Chestertons Notting Hill Sales

30 Ledbury Road

Notting Hill

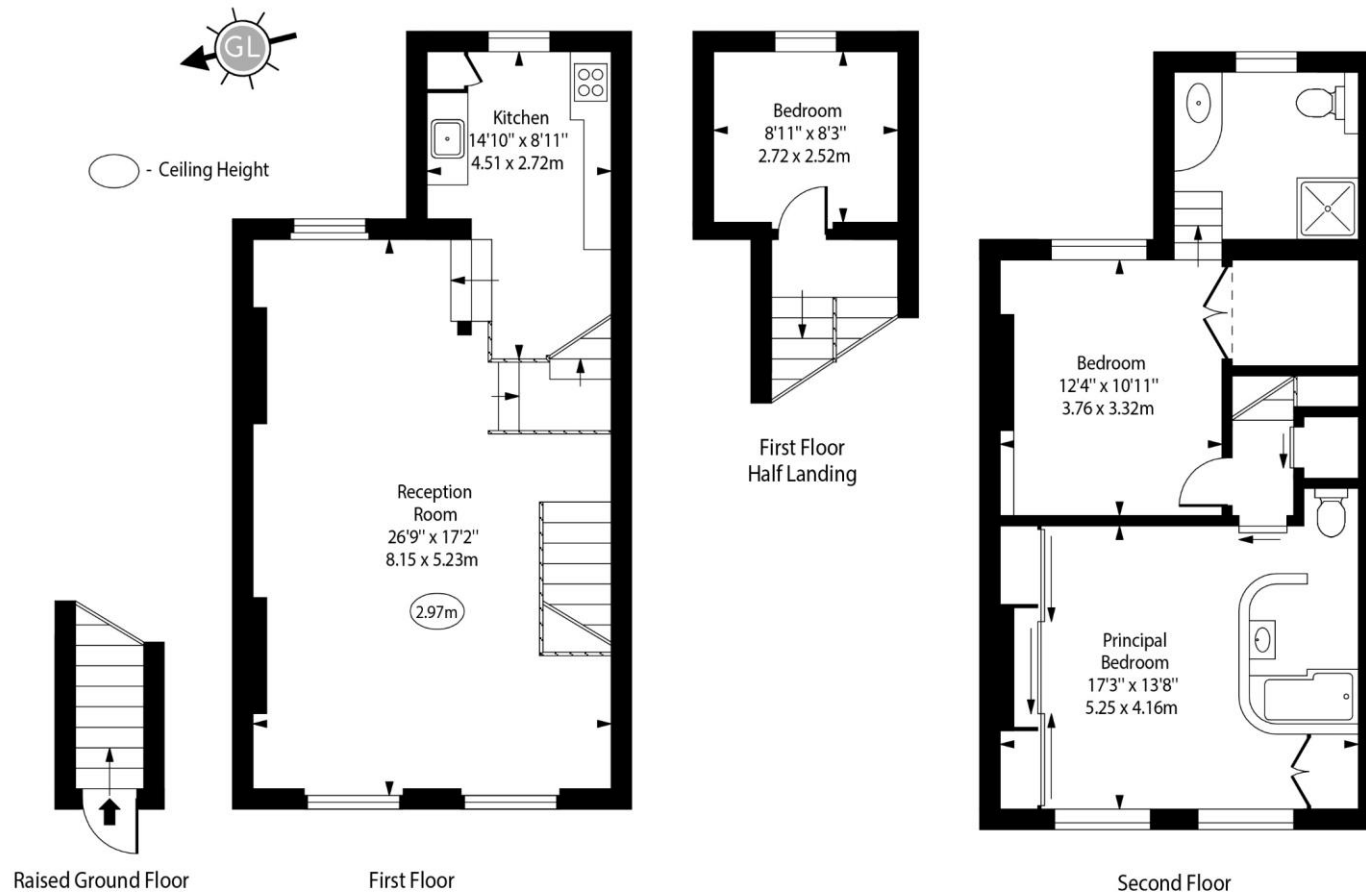
London

W11 2AB

nottinghill@chestertons.co.uk

0203 040 8585

Cornwall Crescent, W11



Every attempt has been made to ensure the accuracy of the floor plan shown. However, all measurements, fixtures, fittings, and data shown are approximate interpretations and for illustrative purposes only. Measured according to the RICS. Not To Scale.

www.goldlens.co.uk

Ref. No. 030114A

