



**The Exchange Lee Street, Leicester LE1 3AH**

**welcome to**

## **The Exchange Lee Street, Leicester**

A two bedroom duplex apartment situated in Leicester city centre and comprises of entrance hall, lounge and kitchen areas and bathroom downstairs with the two bedrooms upstairs. The property offers communal areas including a gym and viewing is highly recommended.

### **Auction Details**

AUCTION DATE: TUESDAY 14th APRIL 2026

BIDDER REGISTRATION: BY 2pm MONDAY 13th APRIL 2026

WHERE TO BID: Please ensure you are registered to bid on the Barnard Marcus Auctions website.  
LEGAL PACK: Download from Barnard Marcus Auctions

### **Communal Entrance**

Leading to the stairs and the lift. The building benefits from a concierge service and an on site residents gym.

### **Lounge Area**

Single glazed window to the rear and radiator.

### **Kitchen Area**

Fitted comprising of wall and base units with work surfaces over, sink drainer unit, integrated oven, hob, dishwasher, fridge and freezer.

### **Bathroom**

With bath, WC and hand wash basin.

### **First Floor Bedroom One**

With storage cupboard and radiator.

### **Bedroom Two**

With storage cupboard and radiator.

### **Agents Notes**

FOR SALE VIA THE MIDLANDS AUCTION CENTRE IN ASSOCIATION WITH BARNARD MARCUS AUCTIONS

TUESDAY 14th APRIL 2026 AT 9.30AM AT THE DE VERE GRAND CONNAUGHT ROOMS, 61-65 GREAT QUEEN STREET, COVENT GARDENS, LONDON WC2B 5DA. YOU CAN ALSO REGISTER FOR ONLINE BIDDING.

### **Conditions Of Sale**

The Conditions of Sale will be deposited at the offices of the auctioneers and vendor's solicitors seven days prior to sale and the purchaser shall be deemed to have knowledge of the same whether inspected or not. Any questions relating to them must be raised prior to the auction. Prospective purchasers are advised to check with the auctioneers before the sale that the property is neither sold nor withdrawn. The purchaser will also be deemed to have read and understood the auction conduct notes printed within the sale catalogue.

### **Health & Safety Advice**

Health & Safety Advice for Property Viewers. Whilst the auctioneers make every effort to ensure the safety and security of viewers at lots, we have not carried out a detailed Health & Safety inspection of the lots in our auction and cannot therefore guarantee the safety and security of viewers. All persons attend properties entirely at their own risk. Particular care should be taken when accessing cellars, attics, exterior grounds, outbuildings and boundaries. All unaccompanied inspections of vacant sites should be made in daylight hours only and entry into such sites is entirely at the viewers' risk.

### **\* Guide And Reserve Prices**





Guide Price: An indication of the seller's current minimum acceptable price at auction. The guide price or range of guide prices is given to assist consumers in deciding whether or not to pursue a purchase. It is usual, but not always the case that a provisional reserve range is agreed between the seller and the auctioneer at the start of marketing. As the reserve is not fixed at this stage and can be adjusted by the seller at any time up to the day of the auction in the light of interest shown during the marketing period, a guide price is issued. This guide price can be shown in the form of a minimum and maximum price range within which an acceptable sale price (reserve) would fall, or as a single price figure within 10% of which the minimum acceptable price (reserve) would fall. A guide price is different to a reserve price (see separate definition). Both the guide price and the reserve price can be subject to change up to and including the day of the auction.

#### **Note**

The auctioneers offer four ways to bid including internet, telephone, proxy, and live room bidding. Prospective purchasers will need to register to bid and pay a holding deposit before the sale commences by registering at Barnard Marcus Auctions website. We do not take credit card or cash deposits. The sale of each lot is subject to a documentation charge of £1,800 (including vat) payable on the fall of the hammer. Guidance notes are set out in the catalogue in relation to auction lots, particularly from a purchasing perspective.



***view this property online*** [williamhbrown.co.uk/Property/LHS120563](http://williamhbrown.co.uk/Property/LHS120563)



welcome to

## The Exchange Lee Street, Leicester

- For Sale By Auction Tuesday 14th April at 9.30am
- Guide Price £65,000 - £75,000
- Two Bedroom Duplex Apartment
- City Centre Location
- Must View

Tenure: Leasehold EPC Rating: C

Council Tax Band: C Service Charge: 2222.50

Ground Rent: 200.00

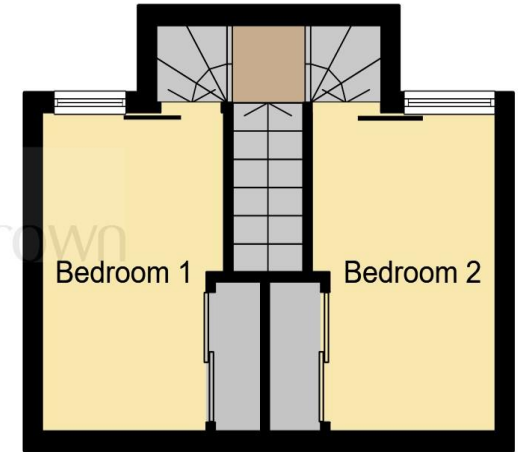
This is a Leasehold property. We are awaiting further details about the Term of the lease. For further information please contact the branch. Please note additional fees could be incurred for items such as Leasehold packs.

guide price

**£65,000**



Ground Floor



First Floor

This floorplan is for illustrative purposes only and is not drawn to scale. Measurements, floor-areas, openings and orientations are approximate. They should not be relied upon for any purpose and do not form any part of an agreement. No liability is taken for any error or mis-statement. All parties must rely on their own inspections.

view this property online [williamhbrown.co.uk/Property/LHS120563](http://williamhbrown.co.uk/Property/LHS120563)



Property Ref:  
LHS120563 - 0007

1. MONEY LAUNDERING REGULATIONS Intending purchasers will be asked to produce identification documentation at a later stage and we would ask for your co-operation in order that there is no delay in agreeing the sale. 2. These particulars do not constitute part or all of an offer or contract. 3. The measurements indicated are supplied for guidance only and as such must be considered incorrect. Potential buyers are advised to recheck measurements before committing to any expense. 4. We have not tested any apparatus, equipment, fixtures or services and it is in the buyers interest to check the working condition of any appliances. 5. Where an EPC, or a Home Report (Scotland only) is held for this property, it is available for inspection at the branch by appointment. If you require a printed version of a Home Report, you will need to pay a reasonable production charge reflecting printing and other costs. 6. We are not able to offer an opinion either written or verbal on the content of these reports and this must be obtained from your legal representative. 7. Whilst we take care in preparing these reports, a buyer should ensure that his/her legal representative confirms as soon as possible all matters relating to title including the extent and boundaries of the property and other important matters before exchange of contracts.

William H Brown is a trading name of Sequence (UK) Limited which is registered in England and Wales under company number 4268443, Registered Office is Cumbria House, 16-20 Hockliffe Street, Leighton Buzzard, Bedfordshire, LU7 1GN. VAT Registration Number is 500 2481 05.

  
william h brown



**0116 251 4131**



[Leicester@williamhbrown.co.uk](mailto:Leicester@williamhbrown.co.uk)



16-18 Halford Street, LEICESTER, Leicestershire,  
LE1 1JB



[williamhbrown.co.uk](http://williamhbrown.co.uk)