



Lancaster House

Borough Road, Isleworth, TW7

£449,000

Situated within the award-winning Grade II listed Lancaster House, this exceptional two-bedroom, two-bathroom apartment offers a rare opportunity to enjoy elegant living in an iconic development. Immaculately presented throughout and spanning an impressive 865 square feet, the first-floor property boasts 3.3m high ceilings and huge windows, flooding the spacious rooms with natural light and showcasing beautiful period features. The cherry on top? The property is offered to market with NO ONWARD CHAIN.

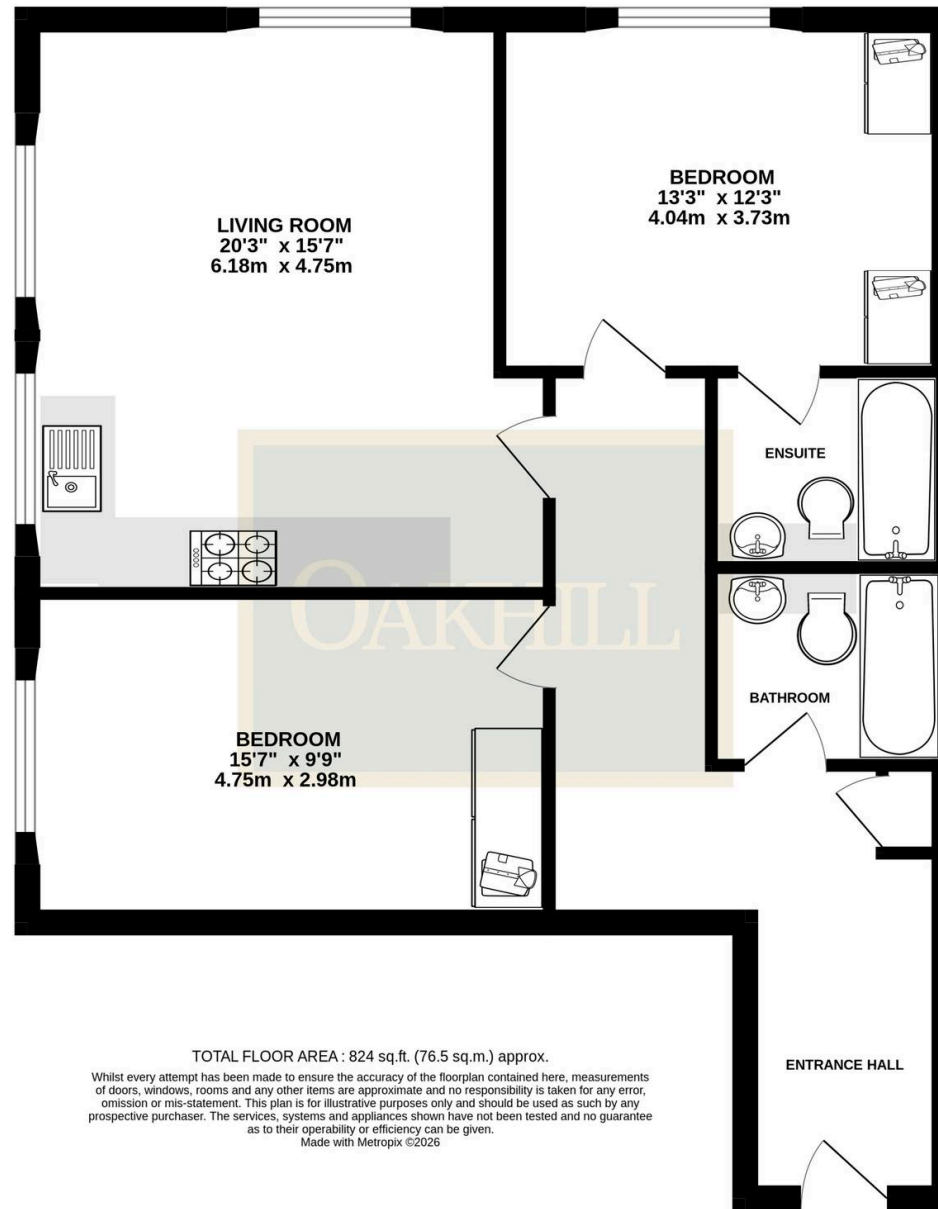
- Spacious Two Double Bedroom, Two Bathroom Apartment with Allocated Parking
- Excellent Condition Throughout
- Award Winning Grade II Listed Development - Lancaster House
- 3.3m High Ceilings, Huge Windows and Beautiful Features
- First Floor Apartment - Covering 824 Square Feet
- Close to Osterley Tube Station, Isleworth Rail Station, Excellent Schools and within Easy Reach of Local Amenities
- Welcoming Entrance Hall
- Modern Fully Fitted Kitchen



SCAN HERE
FOR
PROPERTY
DETAILS



FIRST FLOOR
824 sq.ft. (76.5 sq.m.) approx.



TOTAL FLOOR AREA : 824 sq.ft. (76.5 sq.m.) approx.

Whilst every attempt has been made to ensure the accuracy of the floorplan contained here, measurements of doors, windows, rooms and any other items are approximate and no responsibility is taken for any error, omission or mis-statement. This plan is for illustrative purposes only and should be used as such by any prospective purchaser. The services, systems and appliances shown have not been tested and no guarantee as to their operability or efficiency can be given.

Made with Metropix ©2026

OAKHILL